

| | |
|------------------------|------------------------|
| APP CRS 177° | Rwy Idg 5005 |
| | TDZE 416 |
| | Apt Elev 423 |

RNAV (GPS) RWY 18

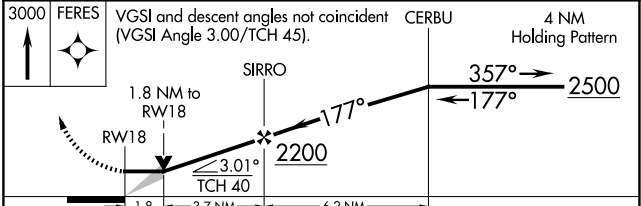
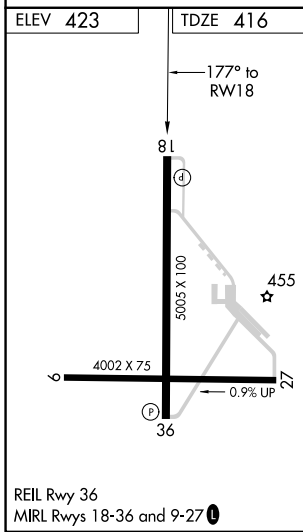
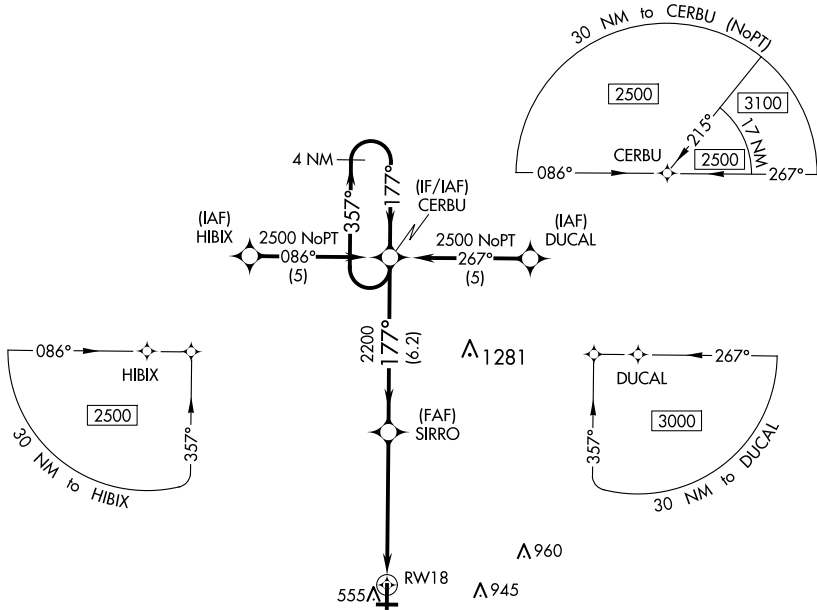
PALESTINE MUNI (PSN)

RNP APCH-GPS.

▼ VDP NA with C David Campbell Fld-Corsicana Muni altimeter setting. Circling to Rwy 9-27, NA at night. When local altimeter setting not received, use Corsicana altimeter setting and increase all MDAs 100 feet and visibility Cat C ¼ SM.

MISSED APPROACH: Climb to 3000 direct FERES and hold.

| | | |
|----------------------------|--|---------------------------------|
| AWOS-3PT 118.025 | FORT WORTH CENTER 135.25 265.1 | UNICOM 122.7 (CTAF) 0 |
|----------------------------|--|---------------------------------|



| CATEGORY | A | B | C | D |
|----------|--------|-------------|--------------------------|------------------------|
| LNAV MDA | 1040-1 | 624 (700-1) | 1040-1¾ 624 (700-1¾) | 1040-2 624 (700-2) |
| CIRCLING | 1040-1 | 617 (700-1) | 1360-2¾ 937 (1000-2¾) | 1360-3 937 (1000-3) |

SC-5, 20 FEB 2025 to 20 MAR 2025

SC-5, 20 FEB 2025 to 20 MAR 2025