

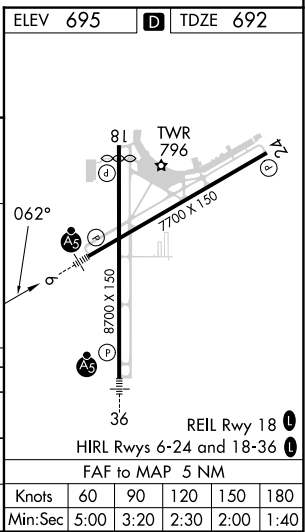
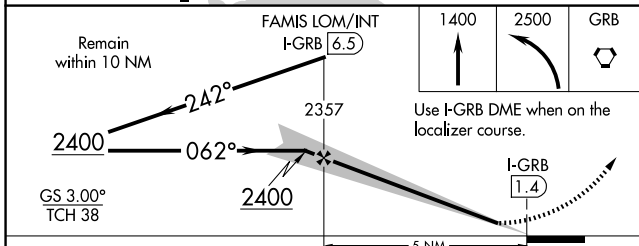
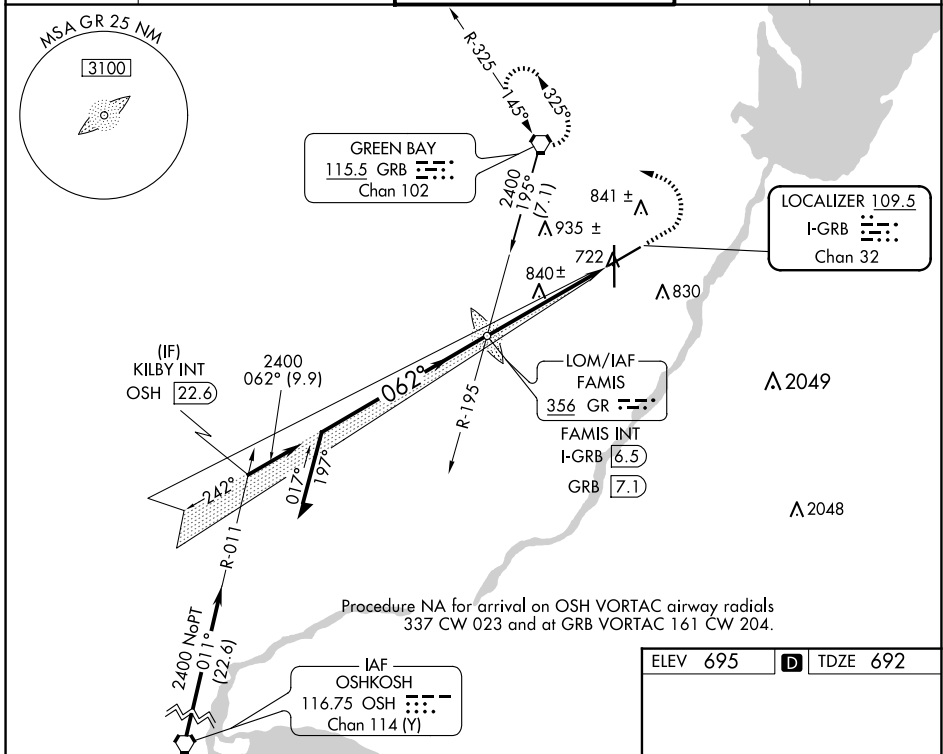
LOC/DME I-GRB <b>109.5</b> Chan <b>32</b>	APP CRS <b>062°</b>	Rwy Idg TDZE Apt Elev <b>7699</b> <b>692</b> <b>695</b>
---	------------------------	--

# ILS or LOC RWY 6

GREEN BAY/AUSTIN STRAUBEL INTL (GRB)

<b>⚠</b> For inop ALS, increase S-LOC 6 Cats C/D visibility to 1 3/8 SM. *RVR 1800 authorized with the use of FD or AP or HUD to DA. <b>ASR</b>	<b>MALSR</b> 	<b>MISSED APPROACH:</b> Climb to 1400 then climbing left turn to 2500 direct GRB VORTAC and hold.
--	------------------	---

<b>ATIS</b> <b>124.1</b>	<b>GREEN BAY APP CON*</b> <b>119.4 338.2</b>	<b>GREEN BAY TOWER*</b> <b>118.7(CTAF) 257.8</b>	<b>GND CON</b> <b>121.9</b>	<b>CLNC DEL</b> <b>121.75</b>
-----------------------------	---	---	--------------------------------	----------------------------------



CATEGORY	A	B	C	D
S-ILS 6 *	892/24 200 (200-1/2)			
S-LOC 6	1200/24 508 (600-1/2)	1200/55	508 (600-1)	
<b>C</b> CIRCLING	1200-1 505 (600-1)	1300-1 3/4 605 (700-1 3/4)	1300-2 605 (700-2)	

EC-3, 20 FEB 2025 to 20 MAR 2025

EC-3, 20 FEB 2025 to 20 MAR 2025