

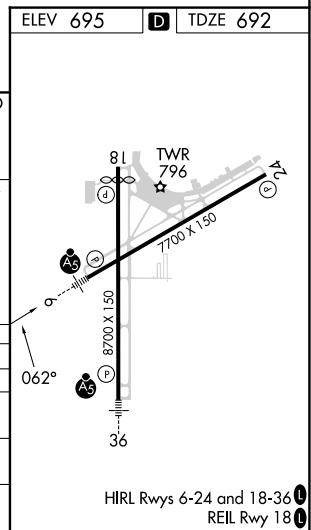
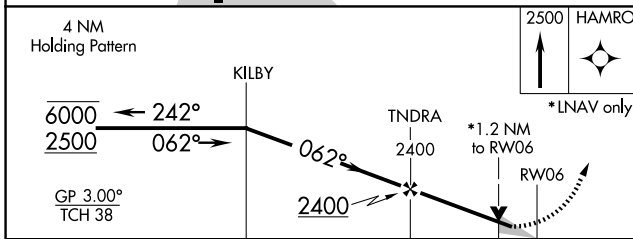
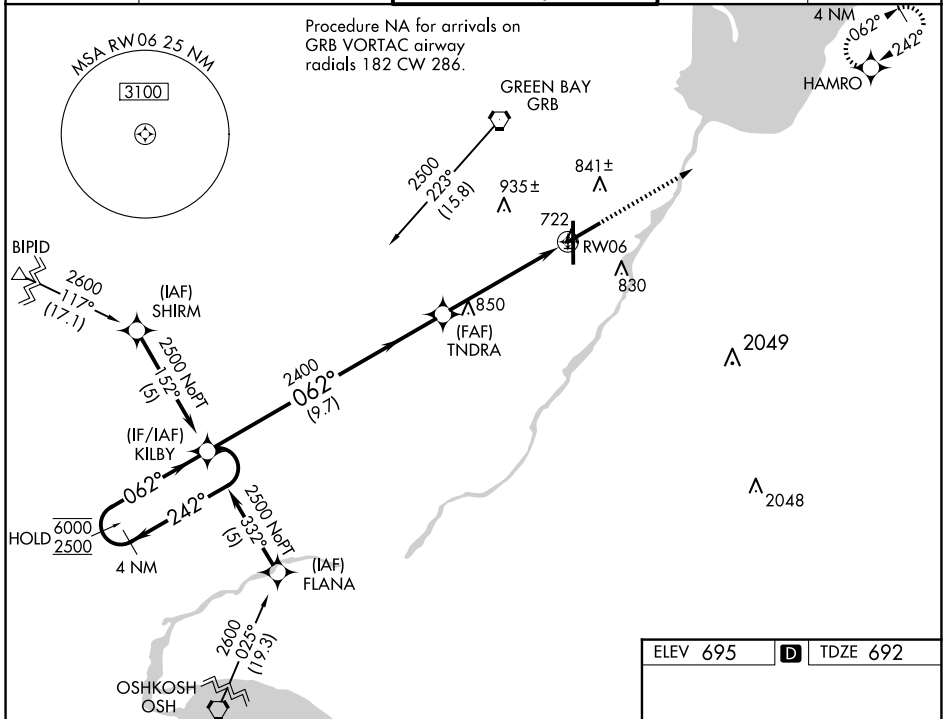
WAAS CH <b>63015</b> <b>W06A</b>	APP CRS <b>062°</b>	Rwy Idg TDZE Apt Elev	<b>7699</b> <b>692</b> <b>695</b>
--	------------------------	-----------------------------	---

# RNAV (GPS) RWY 6

GREEN BAY/AUSTIN STRAUBEL INTL (GRB)

RNP APCH.	MALSR ASR	MISSED APPROACH: Climb to 2500 direct HAMRO and hold.
For uncompensated Baro-VNAV systems, LNAV/VNAV NA below -16°C or above 54°C. For inop ALS, increase LNAV/VNAV all Cats visibility to RVR 4500, and LNAV Cats C and D visibility to RVR 6000. **RVR 1800 authorized with use of FD or AP or HUD to DA		

ATIS <b>124.1</b>	GREEN BAY APP CON* <b>119.4 338.2</b>	GREEN BAY TOWER * <b>118.7 (CTAF) 257.8</b>	GND CON <b>121.9</b>	CLNC DEL <b>121.75</b>
----------------------	--	--	-------------------------	---------------------------



CATEGORY	A	B	C	D
LPV DA**	892/24		200 (200-½)	
LNAV/VNAV DA	1000/24 308 (400-½)		1000/40 308 (400-¾)	
LNAV MDA	1100/24 408 (500-½)		1100/40 408 (500-¾)	
CIRCLING	1200-1 505 (600-1)		1300-1¾ 605 (700-1½)	
			1300-2 605 (700-2)	

EC-3, 20 FEB 2025 to 20 MAR 2025

EC-3, 20 FEB 2025 to 20 MAR 2025