

VICKSBURG, MISSISSIPPI

AL-879 (FAA)

24025

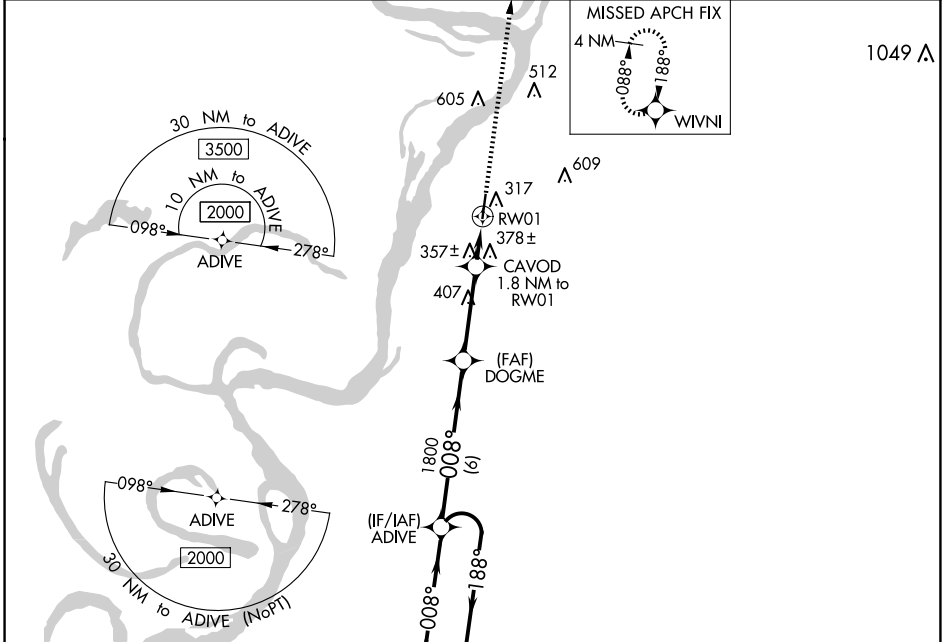
WAAS CH <b>66030</b> <b>W01A</b>	APP CRS <b>008°</b>	Rwy Idg TDZE <b>104</b> Apt Elev <b>107</b>	<b>4701</b>
--	------------------------	---	-------------

# RNAV (GPS) RWY 1

VICKSBURG MUNI (VKS)

RNP APCH.	<p>▼ Circling NA for Cat D west of Rwy 1-19. Procedure NA at night. ▲ Rwy 1 helicopter visibility reduction below 1 SM NA.</p>	MISSED APPROACH: Climb to 2000 direct WIVNI and hold.
-----------	--	---

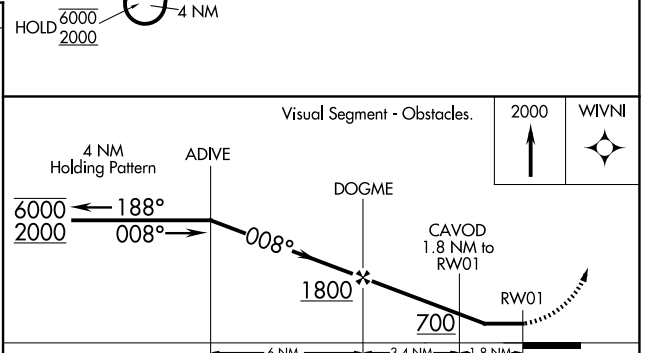
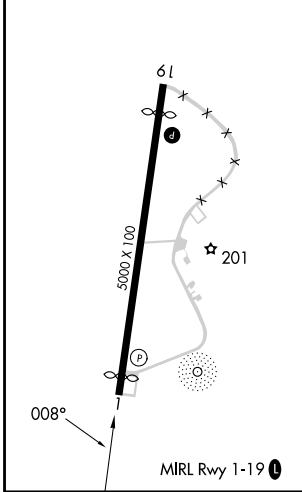
AWOS-3 <b>118.85</b>	MEMPHIS CENTER <b>132.5 259.1</b>	UNICOM <b>122.8 (CTAF) 0</b>
-------------------------	--------------------------------------	---------------------------------



SC-4, 20 FEB 2025 to 20 MAR 2025

SC-4, 20 FEB 2025 to 20 MAR 2025

ELEV 107	TDZE 104
----------	----------



CATEGORY	A	B	C	D
LP MDA	620-1	516 (600-1)	620-1 3/8	516 (600-1 1/2)
LNAV MDA	640-1	536 (600-1)	640-1 1/2	536 (600-1 1/2)
CIRCLING	700-1	593 (600-1)	700-1 1/2 593 (600-1 1/2)	860-2 1/2 753 (800-2 1/2)

VICKSBURG, MISSISSIPPI  
Amdt 1B 13SEP18

32°14'N-90°56'W

# RNAV (GPS) RWY 1