

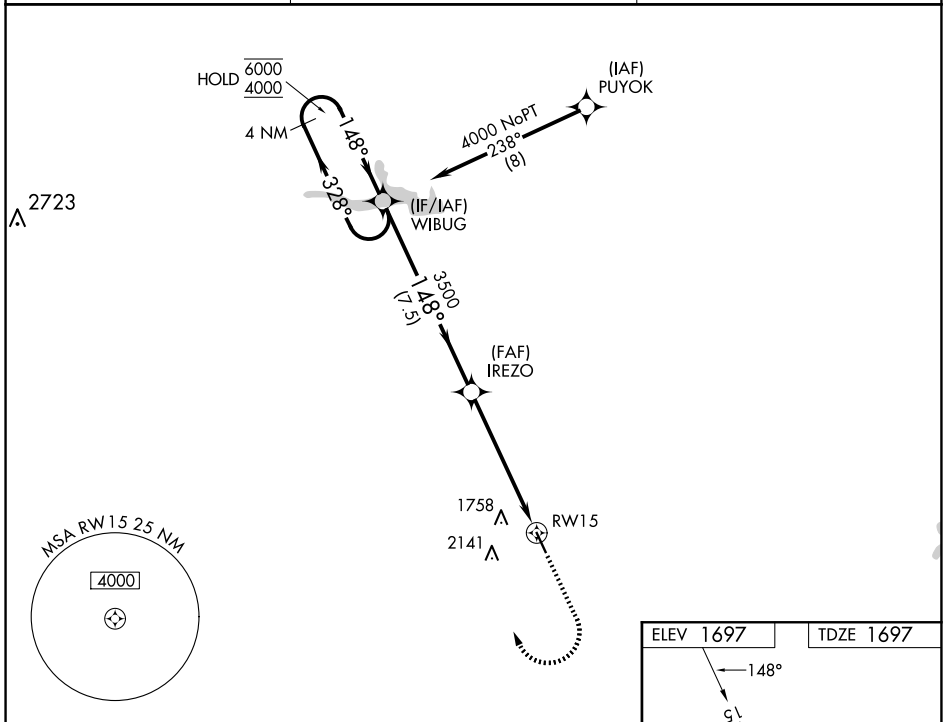
WAAS CH <b>86529</b> <b>W15A</b>	APP CRS <b>148°</b>	Rwy Idg TDZE Apt Elev	<b>4506</b> <b>1697</b> <b>1697</b>
--	------------------------	-----------------------------	---

# RNAV (GPS) RWY 15

COLEMAN MUNI (COM)

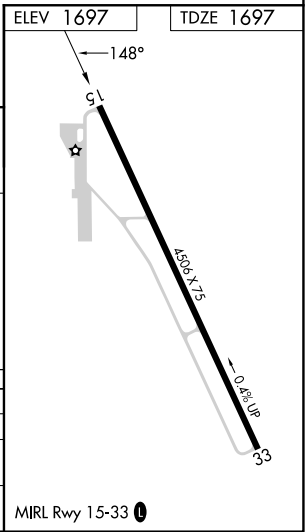
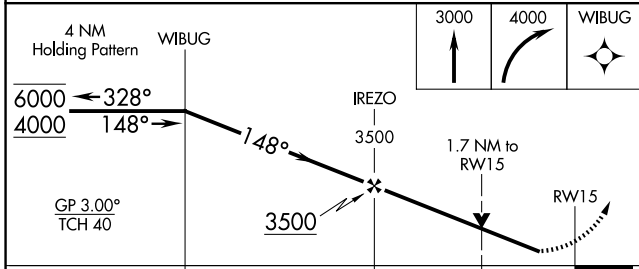
RNP APCH - GPS.	MISSED APPROACH: Climb to 3000 then climbing right turn to 4000 direct WIBUG and hold.
<p>▼ Rwy 15 helicopter visibility reduction below 3/4 SM NA.</p> <p>▲ For uncompensated Baro-VNAV systems, LNAV/VNAV NA below -18°C or above 54°C.</p>	

AWOS-3PT <b>119.1</b>	FORT WORTH CENTER <b>127.45 290.3</b>	UNICOM <b>122.8 (CTAF) 0</b>
--------------------------	--	---------------------------------



SC-3, 20 FEB 2025 to 20 MAR 2025

SC-3, 20 FEB 2025 to 20 MAR 2025



CATEGORY	A	B	C	D
LPV DA	1947-3/4	250 (300-3/4)		NA
LNAV/VNAV DA	2238-15/8	541 (600-15/8)		NA
LNAV MDA	2280-1	583 (600-1)	2280-1 3/4 583 (600-1 3/4)	NA