

NDB MOG <b>404</b>	APP CRS <b>356°</b>	Rwy ldg TDZE Apt Elev	<b>N/A</b> <b>N/A</b> <b>2651</b>
-----------------------	------------------------	--------------------------	-----------------------------------------

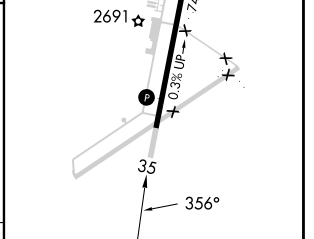
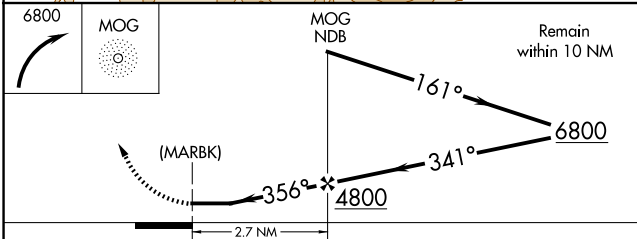
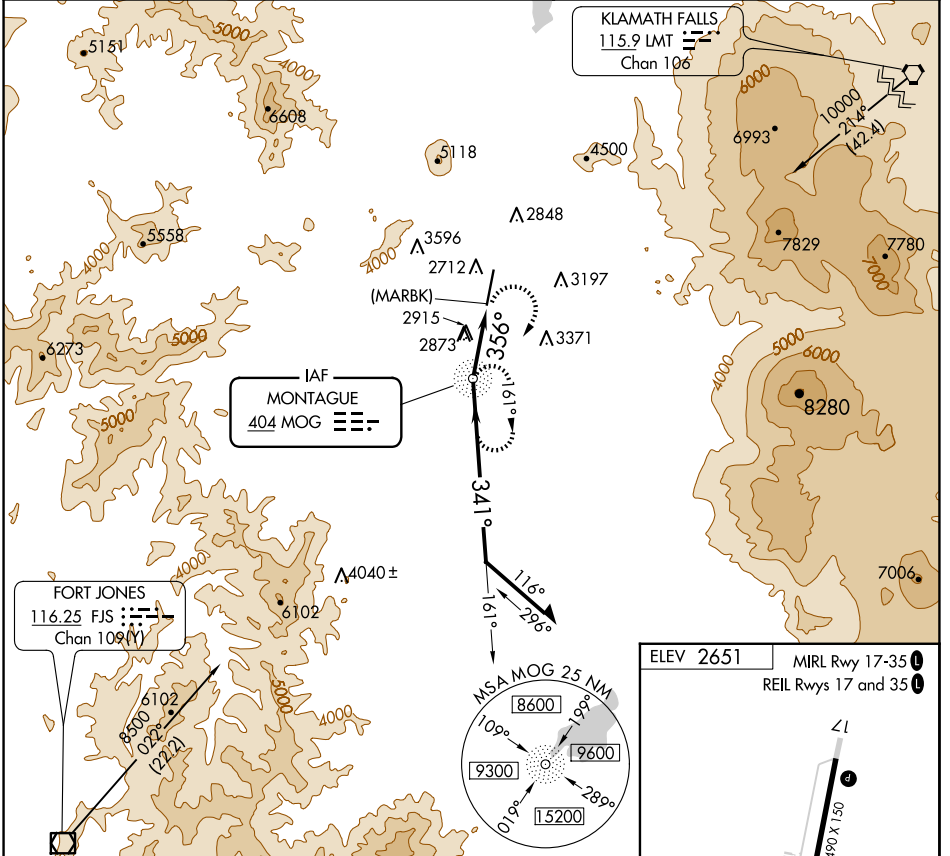
# NDB or GPS-A

SISKIYOU COUNTY (SIY)

**NA** Use Siskiyou County altimeter setting; when not available, use Montague-Yreka Rohrer Fld altimeter setting; when neither received, procedure not authorized. Circling NA for Cats C and D west of Rwy 17-35.

MISSED APPROACH: Climbing right turn to 6800 direct MOG NDB and hold.

ASOS <b>121.125</b>	SEATTLE CENTER <b>124.85 306.3</b>	UNICOM <b>123.0 (CTAF) 0</b>
------------------------	---------------------------------------	---------------------------------



CATEGORY	A		B		C		D		FAF to MAP 2.7 NM							
	CIRCLING	3760-1¼ 1109 (1200-1¼)	3760-1½ 1109 (1200-1½)	3980-3 1329 (1400-3)	4220-3 1569 (1600-3)	Knots	60	90	120	150	180	Min:Sec	2:42	1:48	1:21	1:05

SW-2, 20 FEB 2025 to 20 MAR 2025

SW-2, 20 FEB 2025 to 20 MAR 2025