

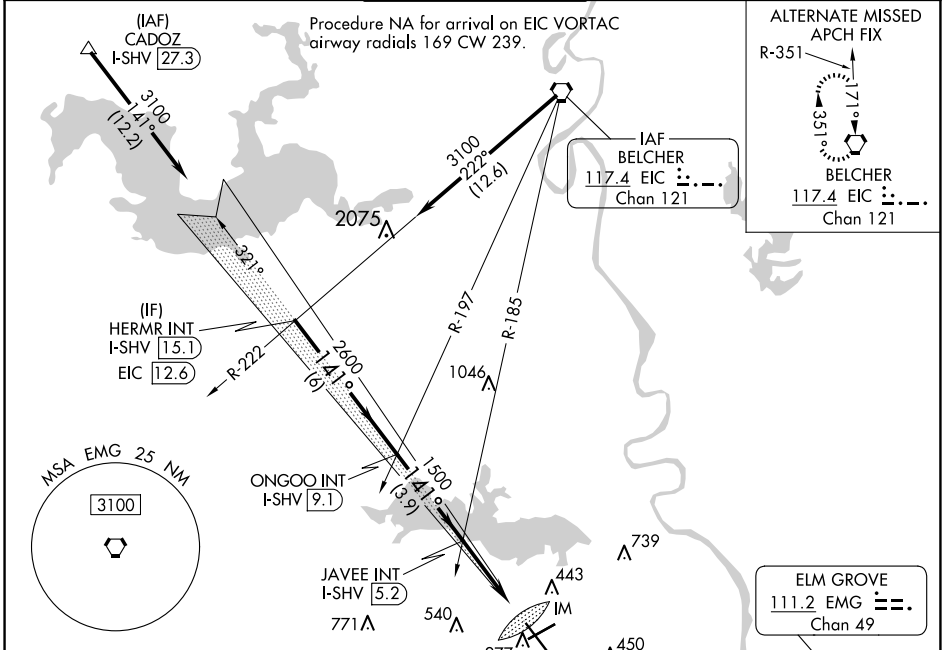
LOC/DME I-SHV <b>110.7</b> Chan <b>44</b>	APP CRS <b>141°</b>	Rwy Idg TDZE Apt Elev <b>8118</b> <b>258</b> <b>258</b>
---	------------------------	--

# ILS or LOC RWY 14

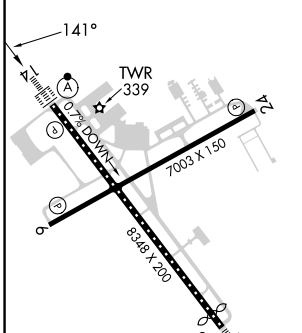
SHREVEPORT RGNL (SHV)

	For inop ALS, increase S-ILS 14 Cat E visibility to RVR 4000 and S-LOC 14 Cat E visibility to 1/4 SM.		MISSED APPROACH: Climb to 2000 then left turn direct EMG VORTAC and hold.

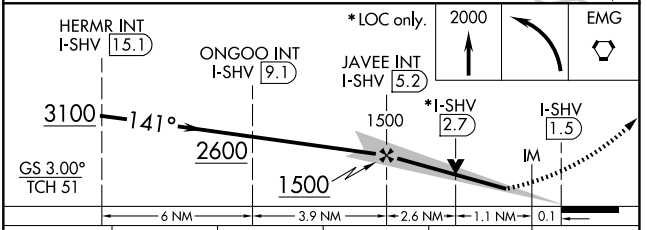
ATIS <b>128.45</b>	SHREVEPORT APP CON <b>119.9 335.55</b>	SHREVEPORT TOWER <b>121.4 236.775</b>	GND CON <b>121.175 236.775</b>	CLNC DEL <b>124.65</b>
-----------------------	---	--	-----------------------------------	---------------------------



ELEV 258	<b>D</b>	TDZE 258
----------	----------	----------



LOCALIZER 110.7 I-SHV $\vdots\vdots\vdots$ Chan 44	HERMR INT I-SHV 15.1	ONGOO INT I-SHV 9.1	JAVEE INT I-SHV 5.2	*LOC only.	2000	EMG
--	----------------------	---------------------	---------------------	------------	------	-----



CATEGORY	A	B	C	D	E
S-ILS 14	458/18 200 (200-1/2)				
S-LOC 14	680/24	422 (500-1/2)	680/40	422 (500-3/4)	
CIRCLING	760-1	502 (600-1)	980-2 722 (800-2)	1100-2 <sup>3/4</sup> 842 (900-2 <sup>3/4</sup> )	1100-3 842 (900-3)

SC-4, 20 FEB 2025 to 20 MAR 2025

SC-4, 20 FEB 2025 to 20 MAR 2025