

LOC/DME I-MWP 109.1 Chan 28	APP CRS 059°	Rwy Idg TDZE Apt Elev	7003 238 258
---	------------------------	-----------------------------	---

LOC RWY 6

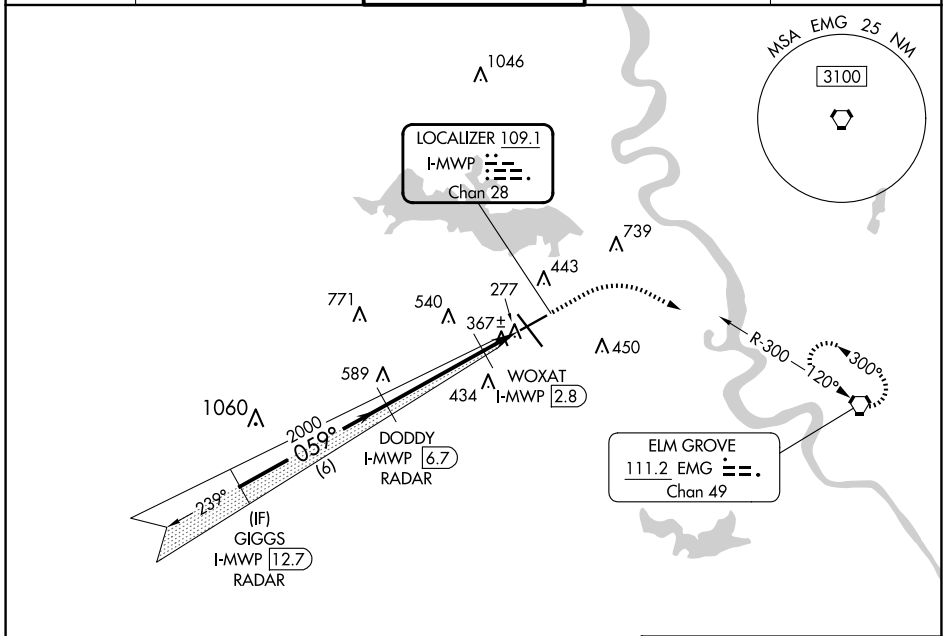
SHREVEPORT RGNL (SHV)

RADAR required for procedure entry. RADAR or DME required.

MISSED APPROACH: Climb to 700 then climbing right turn to 2000 direct EMG VORTAC and hold.

ASR Rwy 6 helicopter visibility reduction below 3/4 SM NA.

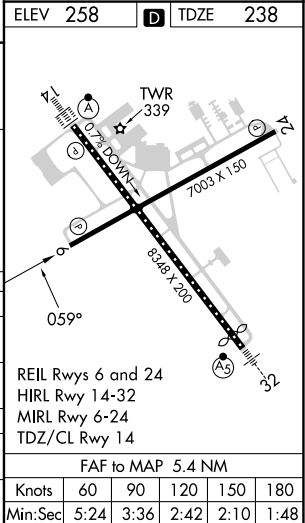
ATIS 128.45	SHREVEPORT APP CON 119.9 335.55	SHREVEPORT TOWER 121.4 236.775	GND CON 121.175 236.775	CLNC DEL 124.65
-----------------------	---	--	-----------------------------------	---------------------------



SC-4, 20 FEB 2025 to 20 MAR 2025

SC-4, 20 FEB 2025 to 20 MAR 2025

	ELEV 258		D TDZE 238		
	GIGGS I-MWP (12.7) RADAR		DODDY I-MWP (6.7) RADAR		
	2000		2000		
	059°		059°		
	6 NM		4 NM		
	WOXAT I-MWP (2.8)		I-MWP (1.4)		
	3.00° TCH 51		740		
	700		2000		
	EMG				
CATEGORY	A	B	C	D	E
S-LOC 6	740-1	502 (500-1)	740-1 3/8	502 (500-1 3/8)	
CIRCLING	760-1	502 (600-1)	980-2 722 (800-2)	1100-2 3/4 842 (900-2 3/4)	1100-3 842 (900-3)
WOXAT FIX MINIMUMS					
S-LOC 6	620-1	382 (400-1)	620-1 1/8	382 (400-1 1/8)	
CIRCLING	760-1	502 (600-1)	980-2 722 (800-2)	1100-2 3/4 842 (900-2 3/4)	1100-3 842 (900-3)



FAF to MAP 5.4 NM					
Knots	60	90	120	150	180
Min:Sec	5:24	3:36	2:42	2:10	1:48