

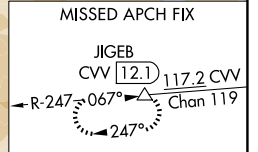
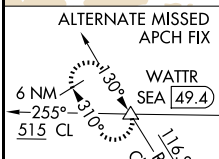
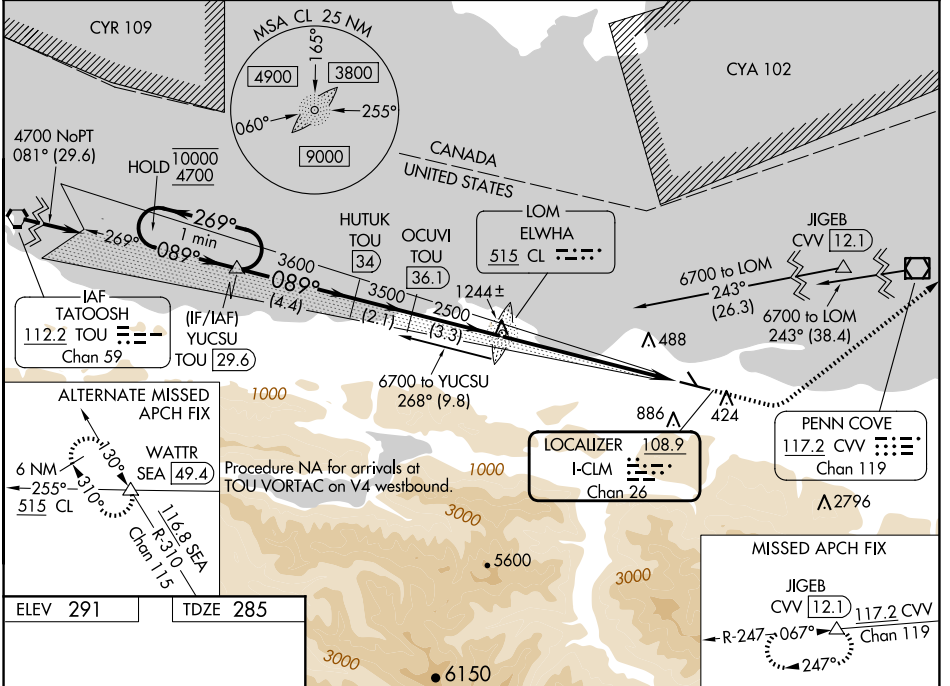
LOC/DME I-CLM <b>108.9</b> Chan <b>26</b>	APP CRS <b>089°</b>	Rwy Idg <b>6347</b> TDZE <b>285</b> Apt Elev <b>291</b>
---	------------------------	---

# ILS or LOC RWY 9

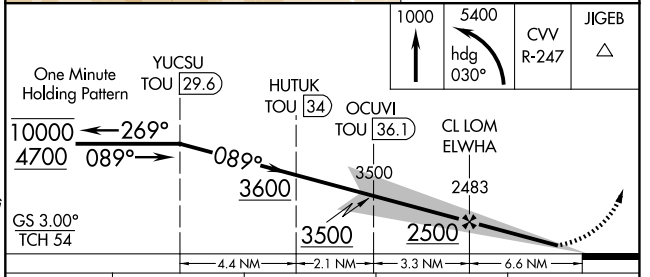
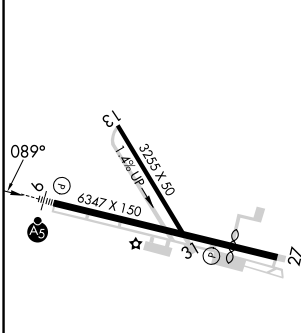
WILLIAM R FAIRCHILD INTL (CLM)

<p>DME required. ADF required for LOC only. ADF required for procedure entry at JIGEB and CVV VOR/DME.</p> <p>NA Circling NA south of Rwy 9-27. Circling Rwy 13, 31 NA at night. DME from TOU VORTAC. Simultaneous reception of I-CLM and TOU DME required. For inop ALS, increase S-LOC 9 Cat C/D visibility to 1½ SM.</p>	<p>MALSR</p>	<p>MISSED APPROACH: Climb to 1000 then climbing left turn to 5400 on heading 030° and on CVV VOR/DME R-247 to JIGEB/CVV 12.1 DME and hold, continue climb-in-hold to 5400.</p>
---	--------------	--

ASOS <b>135.175</b>	WHIDBEY APP CON <b>118.2 285.65</b>	CLNC DEL <b>124.15</b>	UNICOM <b>122.975 (CTAF)</b>
------------------------	--	---------------------------	---------------------------------



ELEV 291	TDZE 285
----------	----------



MIRL Rwy 9-27	REIL Rwy 27	FAF to MAP 6.6 NM							
Knots	60	90	120	150	180				
Min:Sec	6:36	4:24	3:18	2:38	2:12				
CIRCLING	900-1	609 (700-1)	900-1½	211 (300-½)	900-1¾	615 (700-1¾)	900-2¼	1000-2¼	709 (800-2¼)

NW-1, 20 FEB 2025 to 20 MAR 2025

NW-1, 20 FEB 2025 to 20 MAR 2025