


LOC/DME I-HQM 108.7 Chan 24	APP CRS 241°	Rwy Idg 5000 TDZE 16 Apt Elev 18
---	------------------------	---

ILS or LOC RWY 24

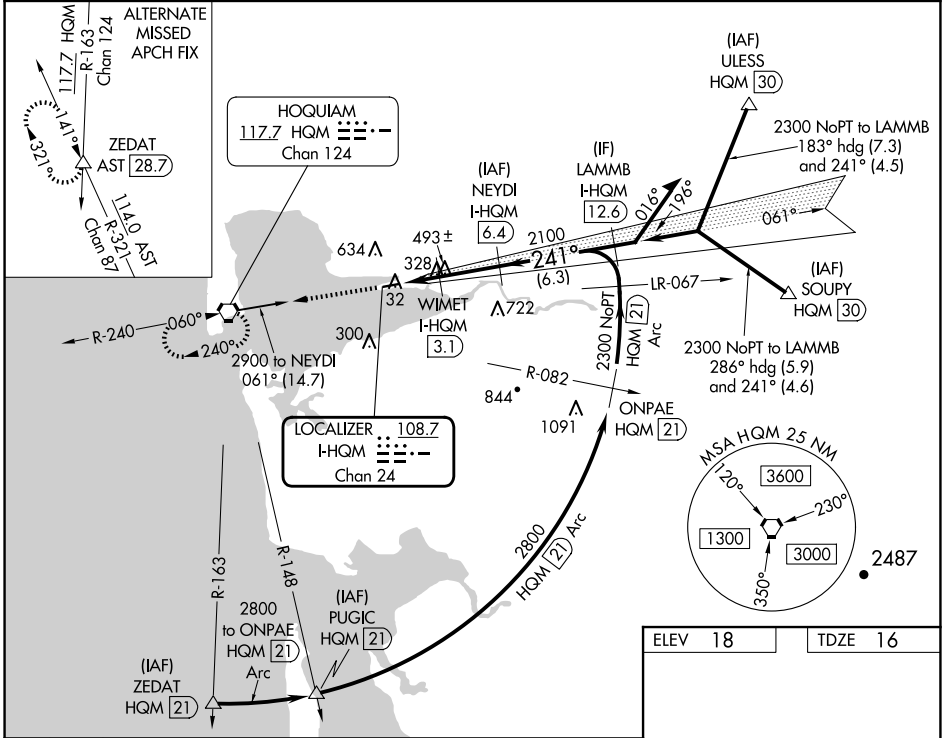
BOWERMAN FLD (HQM)

DME required.

MALS 

MISSED APPROACH: Climb to 2500 direct HQM VORTAC and hold.

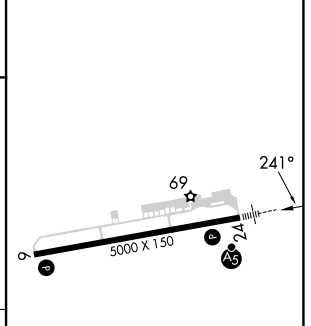
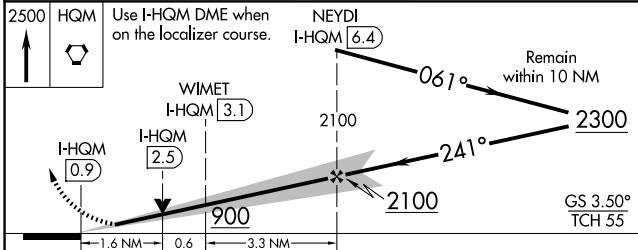
ASOS 135.775	SEATTLE CENTER 128.3 269.0	UNICOM 122.7 (CTAF) 
------------------------	--------------------------------------	---



NW-1, 20 FEB 2025 to 20 MAR 2025

NW-1, 20 FEB 2025 to 20 MAR 2025

ELEV 18	TDZE 16
----------------	----------------



CATEGORY	A	B	C	D
S-ILS 24	216-1/2	200 (200-1/2)	286-1/2 270 (300-1/2)	NA
S-LOC 24	580-1/2	564 (600-1/2)	580-1 1/4 564 (600-1 1/4)	NA
CIRCLING	580-1	562 (600-1)	800-2 1/4 782 (800-2 1/4)	NA

REIL Rwy 6 

HIRL Rwy 6-24 