

WAAS CH <b>82015</b> <b>W06A</b>	APP CRS <b>061°</b>	Rwy Idg TDZE Apt Elev	<b>5000</b> <b>18</b> <b>18</b>
--	------------------------	-----------------------------	---------------------------------------

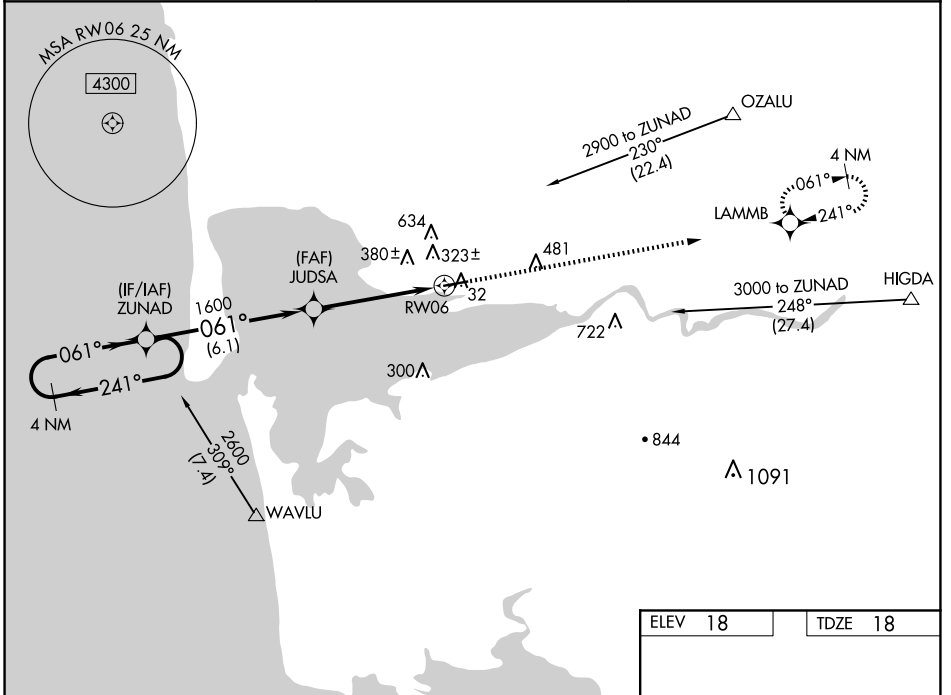
# RNAV (GPS) RWY 6

BOWERMAN FLD (HQM)

RNP APCH. MISSED APPROACH: Climb to 2900 direct LAMMB and hold.

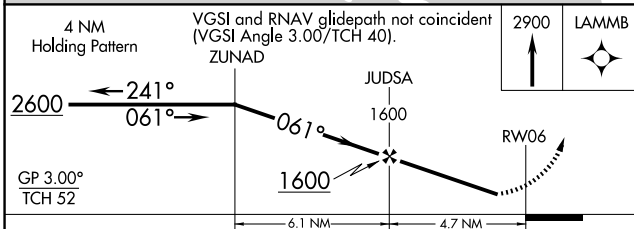
**⚠** Circling NA northwest of Rwy 6-24. For uncompensated Baro-VNAV systems, LNAV/VNAV NA below -15°C (5°F) or above 48°C (118°F). Rwy 6 helicopter visibility reduction below 1 SM NA. When local altimeter setting not received, procedure NA.

ASOS <b>135.775</b>	SEATTLE CENTER <b>128.3 269.0</b>	UNICOM <b>122.7 (CTAF) 0</b>
------------------------	--------------------------------------	---------------------------------



NW-1, 20 FEB 2025 to 20 MAR 2025

NW-1, 20 FEB 2025 to 20 MAR 2025



ELEV 18	TDZE 18
---------	---------

REIL Rwy 6 0  
HIRL Rwy 6-24 0

CATEGORY	A	B	C	D
LPV DA	308-1 290 (300-1)			
LNAV/VNAV DA	758-2½ 740 (800-2½)			
LNAV MDA	620-1 602 (700-1)	620-1¾ 602 (700-1¾)	620-2 602 (700-2)	620-2 602 (700-2)
CIRCLING	620-1 602 (700-1)	800-2¼ 782 (800-2¼)	860-2¾ 842 (900-2¾)	860-2¾ 842 (900-2¾)