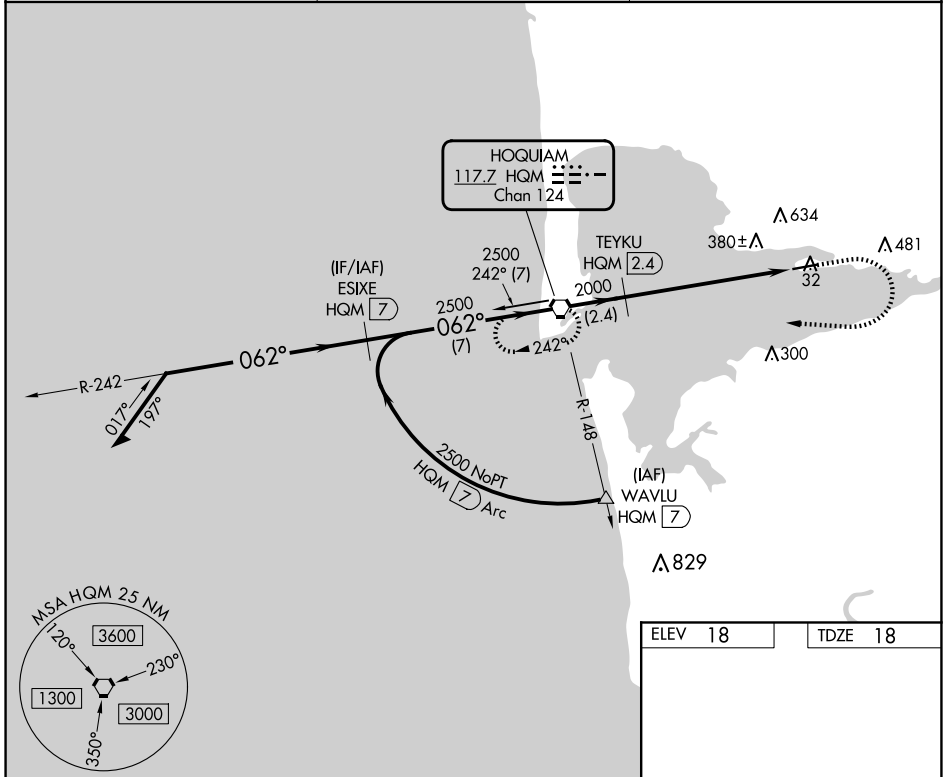


VORTAC HQM <b>117.7</b> Chan <b>124</b>	APP CRS <b>062°</b>	Rwy Idg TDZE Apt Elev	<b>5000</b> <b>18</b> <b>18</b>
---	------------------------	-----------------------------	---------------------------------------

**VOR RWY 6**  
BOWERMAN FLD (HQM)

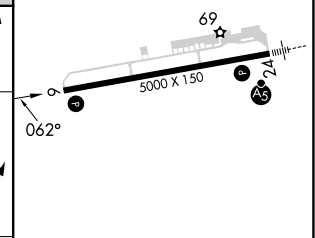
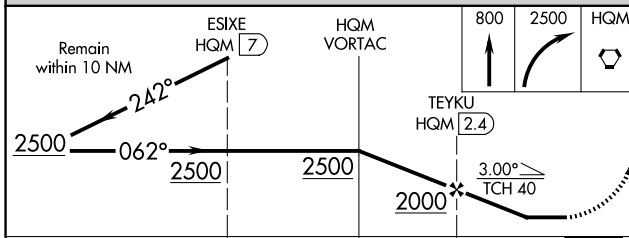
DME required.	MISSED APPROACH: Climb to 800 then climbing right turn 2500 direct HQM VORTAC and hold, continue climb-in-hold to 2500.
---------------	---

ASOS <b>135.775</b>	SEATTLE CENTER <b>128.3 269.0</b>	UNICOM <b>122.7 (CTAF) 0</b>
------------------------	--------------------------------------	---------------------------------



NW-1, 20 FEB 2025 to 20 MAR 2025

NW-1, 20 FEB 2025 to 20 MAR 2025



	ESIXE HQM (7)		HQM VORTAC		800	2500	HQM
CATEGORY	A		B		C		D
S-6	640-1 622 (700-1)		640-1¾ 622 (700-1¾)				
CIRCLING	640-1 622 (700-1)		800-2¼ 782 (800-2¼)		840-2¾ 822 (900-2¾)		
	REIL Rwy 6 0 HIRL Rwy 6-24 0						
	FAF to MAP 6.1 NM						
	Knots	60	90	120	150	180	
	Min:Sec	6:06	4:04	3:03	2:26	2:02	