

LOC/DME I-TJL 110.15	APP CRS 195°	Rwy Idg TDZE Apt Elev	6230 6 8
Chan 38 (Y)			

ILS or LOC RWY 19

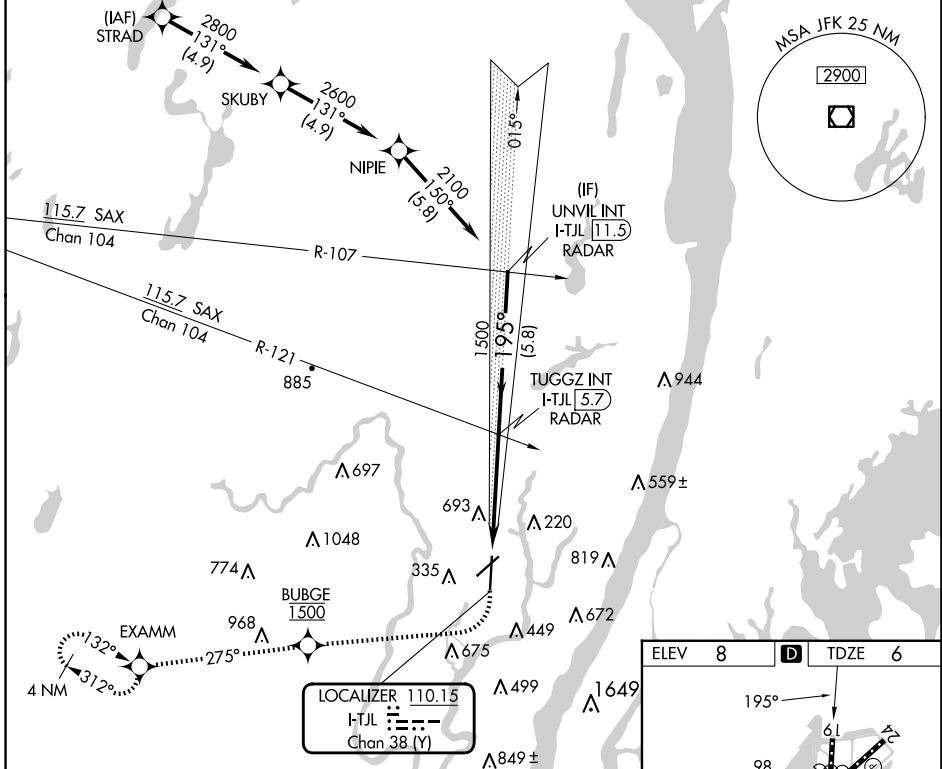
TETERBORO (TEB)

RNP APCH - GPS. RADAR required.

⚠ Circling NA for Cats B, C, D northwest of Rwy 6-19.

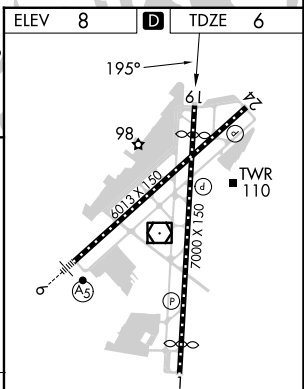
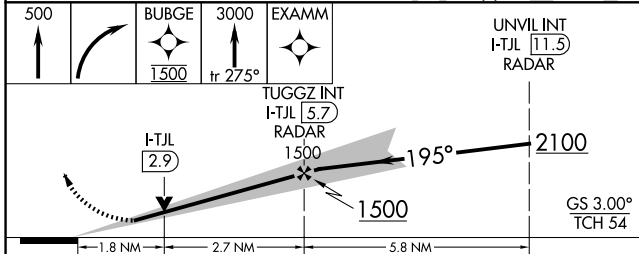
MISSED APPROACH: Climb to 500 then climbing right turn direct BUBGE, cross BUBGE at 1500, then climb to 3000 on track 275° to EXAMM and hold, continue climb-in-hold to 3000.

D-ATIS 114.2 132.85	NEWARK APP CON 127.6 379.9	TETERBORO TOWER 119.5	GND CON 121.9	CLNC DEL 128.05	CPDLC
-------------------------------	--------------------------------------	---------------------------------	-------------------------	---------------------------	-------



NE-2, 20 FEB 2025 to 20 MAR 2025

NE-2, 20 FEB 2025 to 20 MAR 2025



500	BUBGE 1500	3000	EXAMM	UNVIL INT I-TJL [11.5] RADAR
↑	↻	↑	↻	
	fr 275°			
	I-TJL [2.9]	TUGGZ INT I-TJL [5.7] RADAR		
		1500		
		195°		
		2100		
		1500		
				GS 3.00° TCH 54
	1.8 NM	2.7 NM	5.8 NM	
CATEGORY	A	B	C	D
S-ILS 19		241-3/4	235 (300-3/4)	
S-LOC 19	640-1	634 (700-1)	640-1 3/4	634 (700-1 3/4)
C CIRCLING	760-1	752 (800-1)	820-2 1/2	1040-3
			812 (900-2 1/2)	1032 (1100-3)

TDZ/CL Rwys 6 and 19					
REIL Rwys 1, 6, 19 and 24					
HIRL Rwys 1-19 and 6-24					
FAF to MAP 4.5 NM					
Knots	60	90	120	150	180
Min:Sec	4:30	3:00	2:15	1:48	1:30