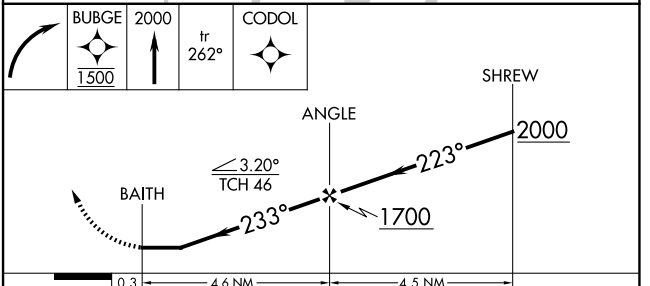
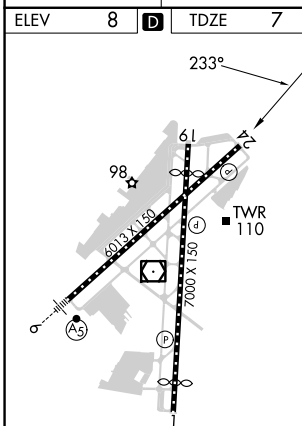
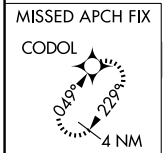
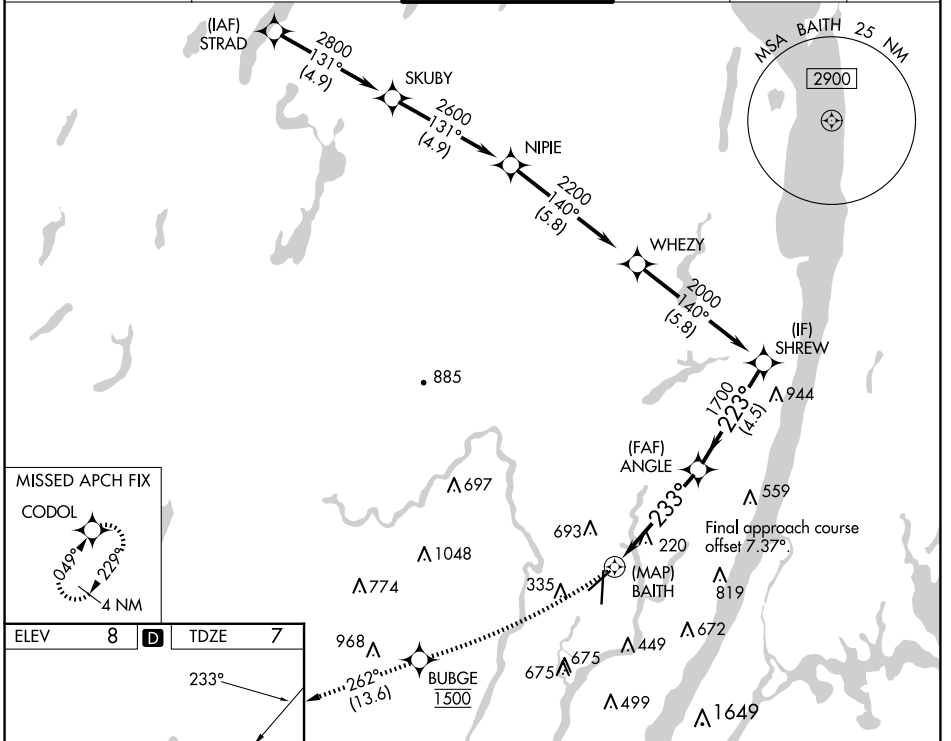


APP CRS	Rwy Idg	<b>6013</b>
<b>233°</b>	TDZE	<b>7</b>
	Apt Elev	<b>8</b>

# RNAV (GPS) RWY 24

TEREBORO (TEB)

RNP APCH. RADAR required.			MISSED APPROACH: Climbing right turn direct BUBGE, cross BUBGE at 1500 then climb to 2000 on track 262° to CODOL and hold.			
D-ATIS <b>114.2 132.85</b>		NEWARK APP CON <b>127.6 379.9</b>	<b>TEREBORO TOWER</b> <b>119.5</b>	GND CON <b>121.9</b>	CLNC DEL <b>128.05</b>	CPDLC



ELEV	<b>8</b>	<b>D</b>	TDZE	<b>7</b>
TDZ/CL Rwy 6 and 19	REIL Rwy 1, 6, 19 and 24			
HIRL Rwy 1-19 and 6-24				
CATEGORY	A	B	C	D
LNAV MDA	580-1	573 (600-1)	580-1½	573 (600-1½)
<b>C</b> CIRCLING	760-1	752 (800-1)	820-2½ 812 (900-2½)	1040-3 1032 (1100-3)

NE-2, 20 FEB 2025 to 20 MAR 2025

NE-2, 20 FEB 2025 to 20 MAR 2025