

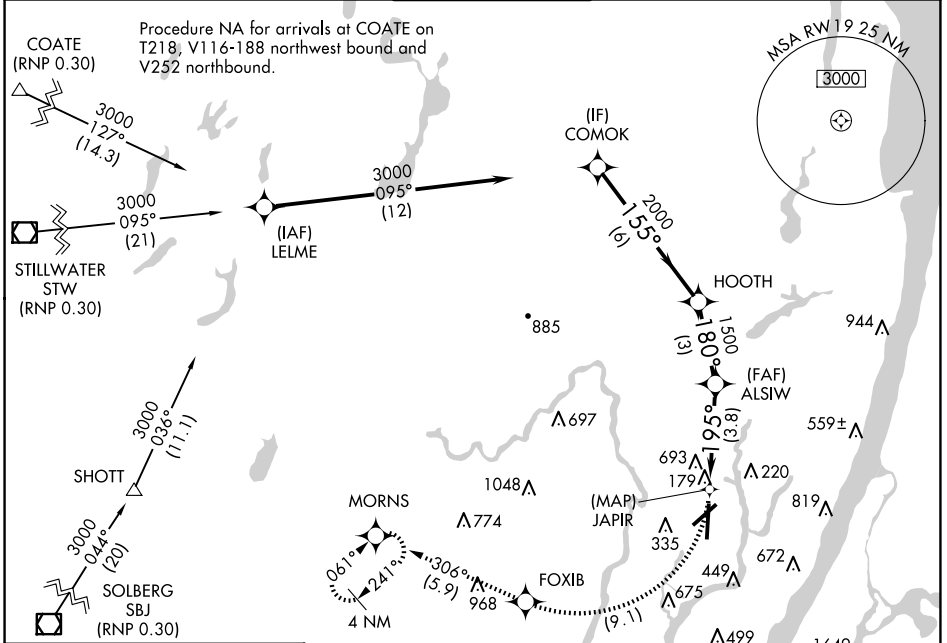
APP CRS	Rwy Idg	6230
195°	TDZE	6
	Apt Elev	8

RNAV (RNP) Z RWY 19

TETERBORO (TEB)

▼	For uncompensated Baro-VNAV systems, procedure NA below -13°C (8°F) or above 54°C (130°F). RF required. GPS required.	MISSED APPROACH: Climb to 1500 via right turn to FOXIB, then climb to 3000 on track 306° to MORNNS and hold.
▲ NA	Misled approach requires RNP less than 1.0.	

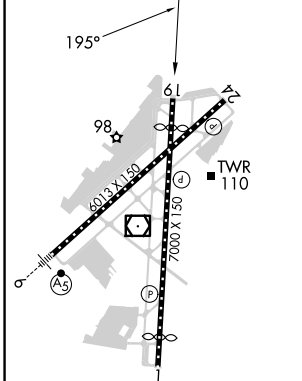
D-ATIS	NEWARK APP CON	TETERBORO TOWER	GND CON	CLNC DEL	CPDLC
114.2 132.85	127.6 379.9	119.5	121.9	128.05	



NE-2, 20 FEB 2025 to 20 MAR 2025

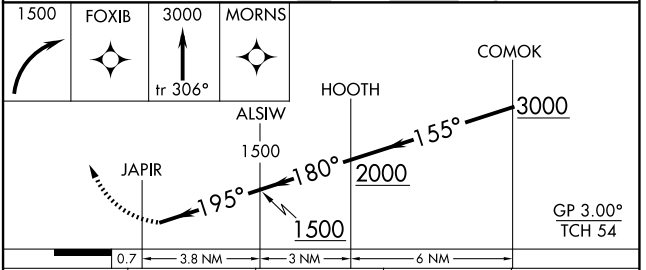
NE-2, 20 FEB 2025 to 20 MAR 2025

ELEV	8	D	TDZE	6
------	----------	----------	------	----------



TDZ/CL Rws 6 and 19
 REIL Rws 1, 6, 19 and 24
 HIRL Rws 1-19 and 6-24

Procedure NA for arrivals on SBJ VOR/DME airway radials 028 CW 117.



CATEGORY	A	B	C	D
RNP 0.10 DA	499-1¾ 493 (500-1¾)			

AUTHORIZATION REQUIRED