

WENTZ ONE DEPARTURE (RNAV)

TETERBORO (TEB)
TETERBORO, NEW JERSEY

NE-2, 20 FEB 2025 to 20 MAR 2025

NEWARK DEP CON
119.2 126.7 379.9
D-ATIS
114.2 132.85
CINC DEL
128.05
CPDLC
GND CON
121.9
TETERBORO TOWER
119.5

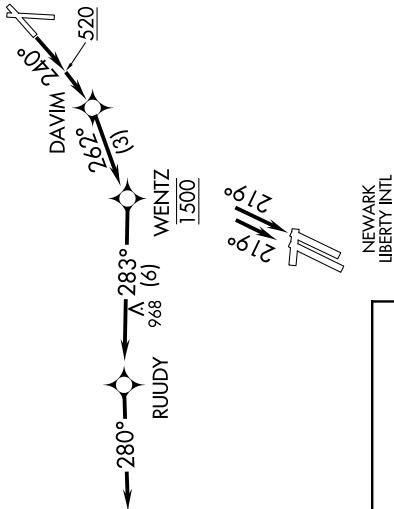
RNAV 1 - DME/DME/IRU or GPS.
RADAR required.

TOP ALTITUDE:
1500

NOTE: CAUTION between TEB airport and WENTZ, EWR traffic overhead at 2500' MSL.
NOTE: If unable to accept climb rate, advise ATC on initial contact.

TAKEOFF MINIMUMS:

Rwy 24: Standard with minimum
climb of 500'/NM to 520.



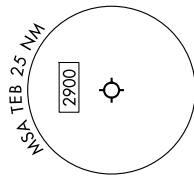
DEPARTURE ROUTE DESCRIPTION

TAKEOFF RUNWAY 24: Climb on heading 240° to 520, then direct DAVIM, then on track 262° to cross WENTZ at 1500, then on track 283° to RUUDY, then on track 280°, thence....

...expect RADAR vectors. Maintain 1500, expect clearance to filed altitude ten minutes after departure.

LOST COMMUNICATIONS:

After crossing WENTZ at 1500, then climb to cross RUUDY at 2000. Then proceed to first filed FIX and climb to filed altitude.



NOTE: Chart not to scale.

WENTZ ONE DEPARTURE (RNAV)

TETERBORO, NEW JERSEY
TETERBORO (TEB)

NE-2, 20 FEB 2025 to 20 MAR 2025