

WAAS CH <b>53723</b> <b>W10A</b>	APP CRS <b>101°</b>	Rwy Idg TDZE Apt Elev	<b>6003</b> <b>74</b> <b>85</b>
--	------------------------	-----------------------------	---------------------------------------

# RNAV (GPS) RWY 10

MILLVILLE MUNI (MIV)

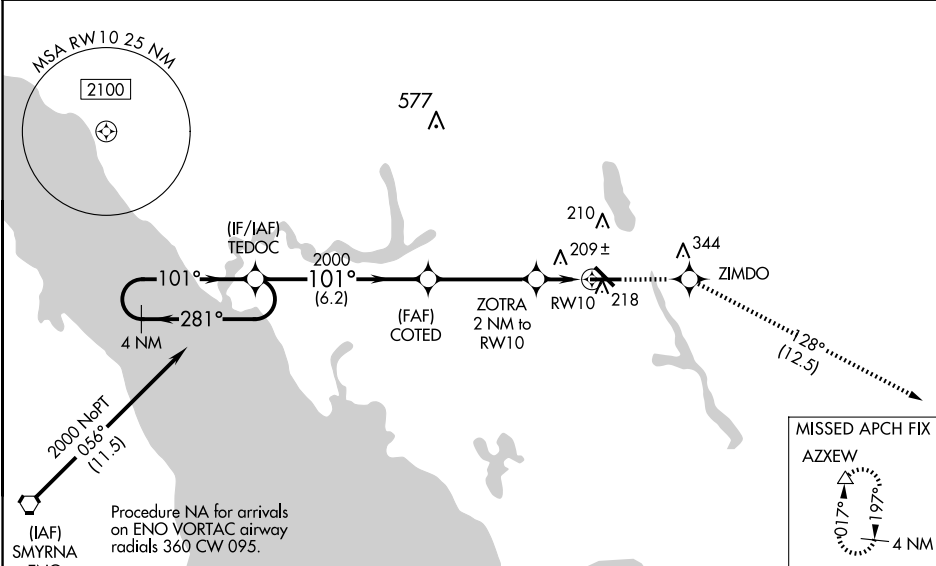
RNP APCH-GPS.

▼ For uncompensated Baro-VNAV systems, LNAV/VNAV NA below -15°C or above 54°C. When local altimeter setting not received, use Atlantic City altimeter setting; increase LPV DA to 330 feet; LNAV/VNAV DA to 571 feet and visibility ¼ SM; increase all MDAs 60 feet and visibility Cat C and D ½ SM. Baro-VNAV and VDP NA when using Atlantic City altimeter setting. For inop MALSRS when using Atlantic City altimeter setting, increase LNAV/VNAV all Cat visibility to 1⅝.



MISSED APPROACH: Climb to 2000 direct ZIMDO and on track 128° to AZXEW and hold.

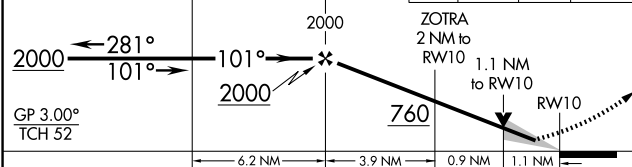
ASOS <b>119.6</b>	ATLANTIC CITY APP CON <b>124.6 327-125</b>	UNICOM <b>123.0 (CTAF) 0</b>
----------------------	---	---------------------------------



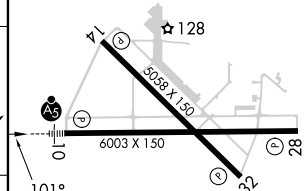
NE-2, 20 FEB 2025 to 20 MAR 2025

NE-2, 20 FEB 2025 to 20 MAR 2025

ELEV 85	TDZE 74
---------	---------



CATEGORY	A	B	C	D
LPV DA	274-1/2 200 (200-1/2)			
LNAV/VNAV DA	515-1 441 (500-1)			
LNAV MDA	460-1/2 386 (400-1/2)	460-5/8 386 (400-5/8)		
CIRCLING	520-1 435 (500-1)	580-1 495 (500-1)	660-1 1/2 575 (600-1 1/2)	660-2 575 (600-2)



MIRL Rwy 10-28 and 14-32 0
----------------------------