

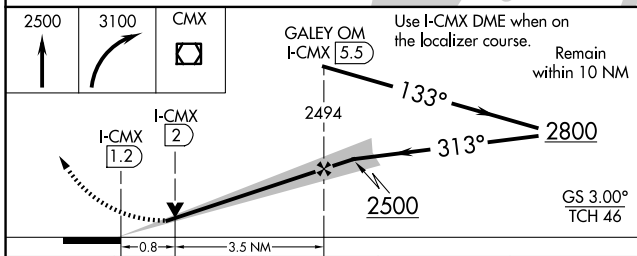
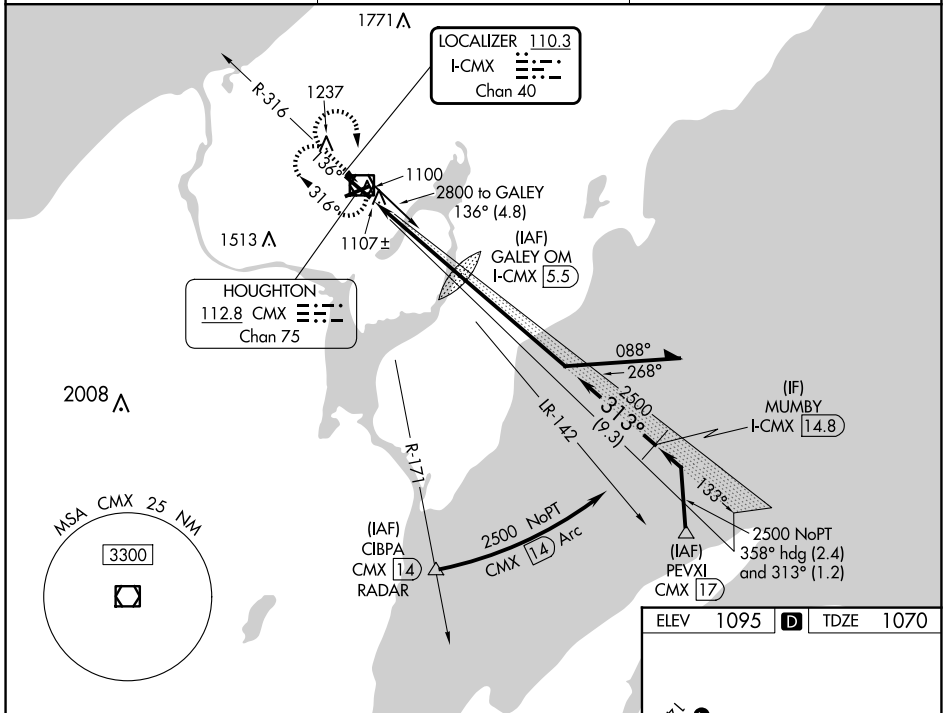
LOC/DME I-CMX 110.3 Chan 40	APP CRS 313°	Rwy ldg TDZE Apt Elev 6501 1070 1095
---	------------------------	--

ILS or LOC RWY 32

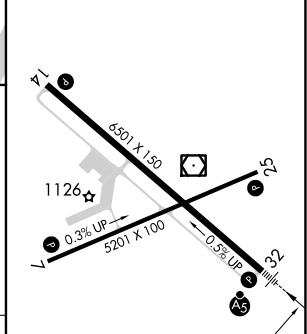
HOUGHTON COUNTY MEML (CMX)

DME required for procedure entry.		MALSR 	MISSED APPROACH: Climb to 2500 then climbing right turn to 3100 direct CMX VOR/DME and hold.
	For inop ALS, increase S-LOC 32 Cat C/D visibility to 3/8 SM.		

ASOS 125.675	MINNEAPOLIS CENTER 133.55 379.1	UNICOM 122.7 (CTAF) 0
------------------------	---	---------------------------------



ELEV 1095	D	TDZE 1070
-----------	----------	-----------



CATEGORY	A	B	C	D
S-ILS 32		1270-1/2	200 (200-1/2)	
S-LOC 32		1360-1/2	290 (300-1/2)	
C CIRCLING	1620-1 525 (600-1)	1660-1 565 (600-1)	1700-1 3/4 605 (700-1 3/4)	1820-2 1/4 725 (800-2 1/4)

MIRL Rwy 7-25	1
HIRL Rwy 14-32	1
REIL Rwy 7, 14, and 25	1
FAF to MAP 4.3 NM	
Knots	60 90 120 150 180
Min:Sec	4:18 2:52 2:09 1:43 1:26

EC-1, 20 FEB 2025 to 20 MAR 2025

EC-1, 20 FEB 2025 to 20 MAR 2025