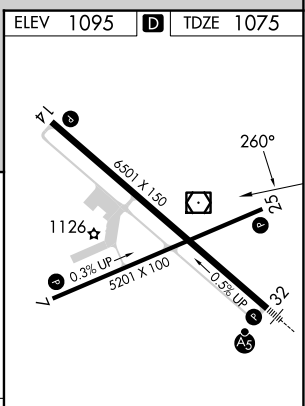
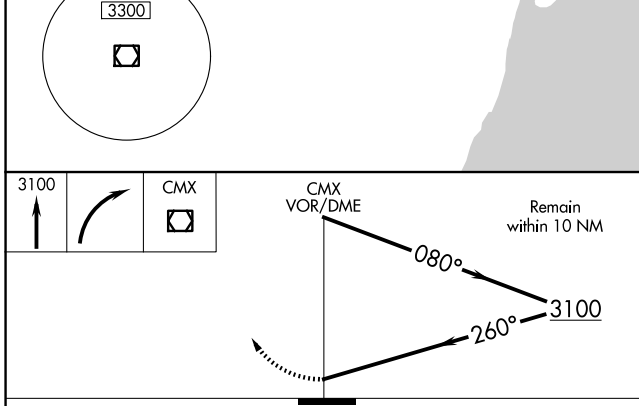
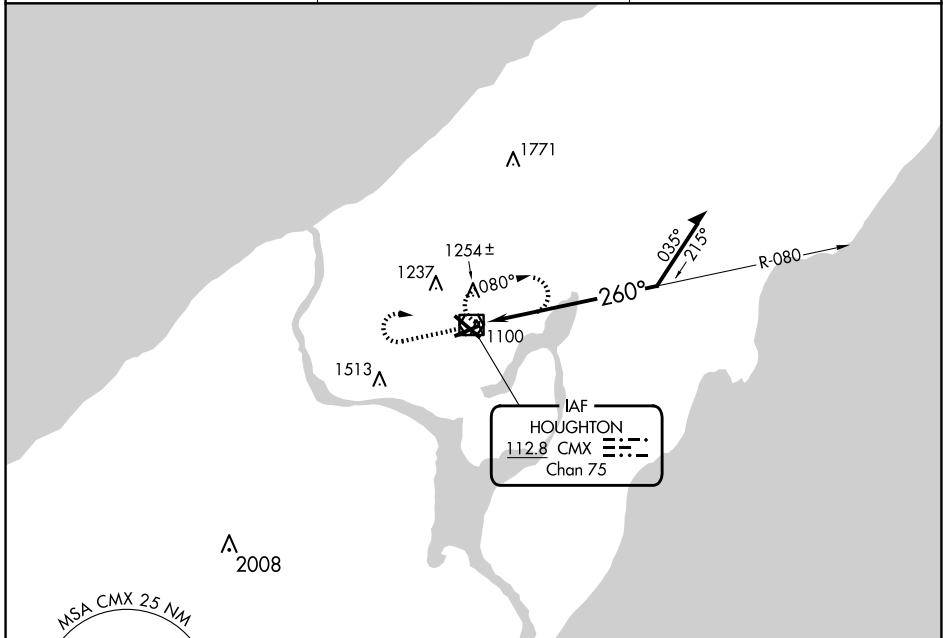


VOR/DME CMX <b>112.8</b> Chan 75	APP CRS <b>260°</b>	Rwy Idg TDZE Apt Elev	<b>5201</b> <b>1075</b> <b>1095</b>
--	------------------------	-----------------------------	---

**VOR RWY 25**  
HOUGHTON COUNTY MEML (CMX)

<p>Rwy 25 helicopter visibility reduction below 3/4 SM NA.</p>	<p>MISSED APPROACH: Climb to 3100 then right turn direct CMX VOR/DME and hold.</p>
--	--

ASOS <b>125.675</b>	MINNEAPOLIS CENTER <b>133.55 379.1</b>	UNICOM <b>122.7 (CTAF) 0</b>
------------------------	---	---------------------------------



CATEGORY	A	B	C	D
S-25	1620-1	545 (600-1)	1620-1 3/8 545 (600-1 3/8)	1620 1 3/4 545 (600-1 3/4)
CIRCLING	1620-1 525 (600-1)	1660-1 565 (600-1)	1700-1 3/4 605 (700-1 3/4)	1820-2 1/4 725 (800-2 1/4)

MIRL Rwy 7-25   
 REIL Rwy 7, 14 and 25   
 HIRL Rwy 14-32

EC-1, 20 FEB 2025 to 20 MAR 2025

EC-1, 20 FEB 2025 to 20 MAR 2025