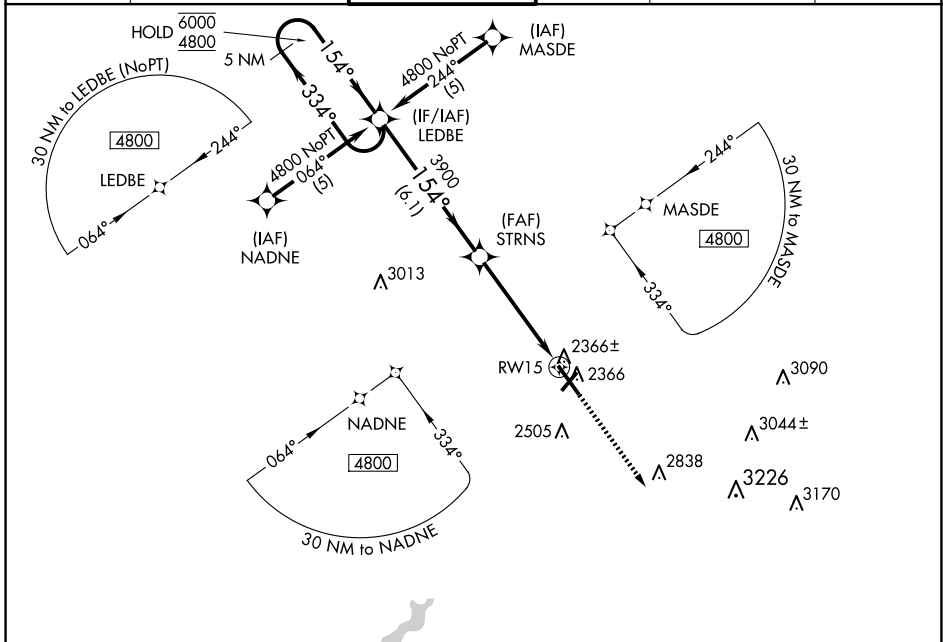


WAAS CH 53513 W15A	APP CRS 154°	Rwy Idg TDZE Apt Elev	6698 2276 2284
--	------------------------	-----------------------------	---

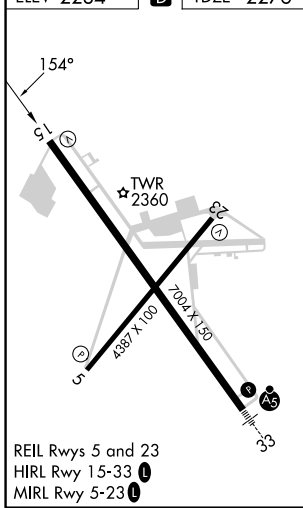
RNAV (GPS) RWY 15

JOHN MURTHA JOHNSTOWN/CAMBRIA COUNTY (JST)

RNP APCH - GPS.		MISSED APPROACH: Climb to 4900 direct COTSO and hold.			
Baro-VNAV NA.					
ATIS 118.325	JOHNSTOWN APP CON ★ 121.2 299.2	JOHNSTOWN TOWER ★ 125.75 (CTAF)	GND CON 121.6	CLNC DEL 126.85 235.775	UNICOM 122.95



ELEV 2284	D	TDZE 2276
-----------	----------	-----------



REIL Rwy 5 and 23
HIRL Rwy 15-33
MIRL Rwy 5-23

5 NM Holding Pattern		LEDBE		STRNS		COTSO	
6000 ← 334°		4800 → 154°		3900		4900 COTSO	
GP 3.00°		TCH 52		3900		*1.1 NM to RWY15	
		6.1 NM		3.8 NM		1.1	
CATEGORY	A	B	C	D			
LPV DA	2526-¾			250 (300-¾)			
LNNAV/VNAV DA	2595-1			319 (400-1)			
LNNAV MDA	2680-1	404 (400-1)	2680-1½ 404 (400-1½)	2680-1¼ 404 (400-1¼)			
C CIRCLING	2700-1 416 (500-1)	2880-1 596 (600-1)	2880-1½ 596 (600-1½)	3000-2¼ 716 (800-2¼)			

NE-4, 20 FEB 2025 to 20 MAR 2025

NE-4, 20 FEB 2025 to 20 MAR 2025