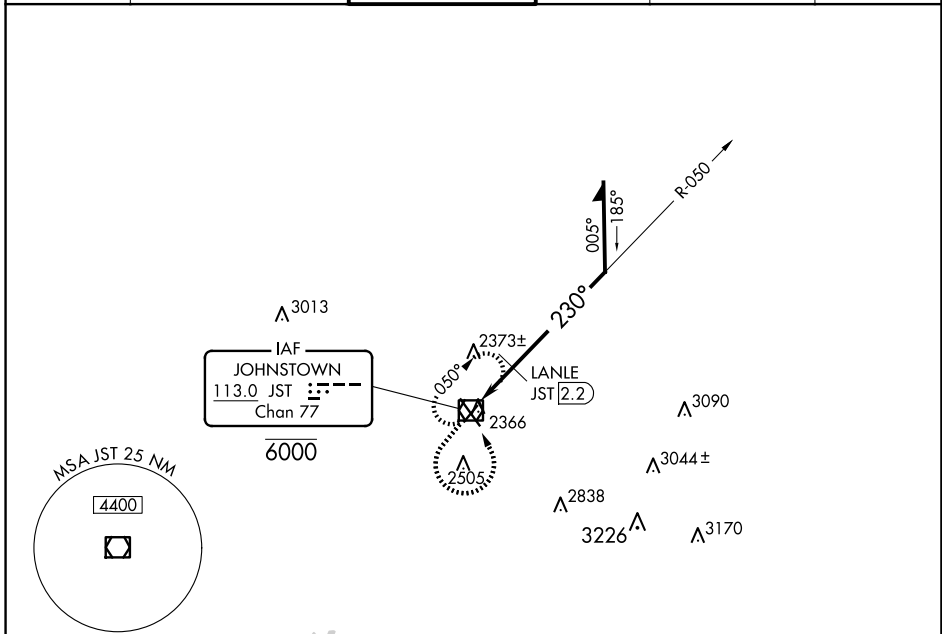


VOR/DME JST 113.0 Chan 77	APP CRS 230°	Rwy Idg TDZE Apt Elev	4387 2284 2284
---	------------------------	-----------------------------	---

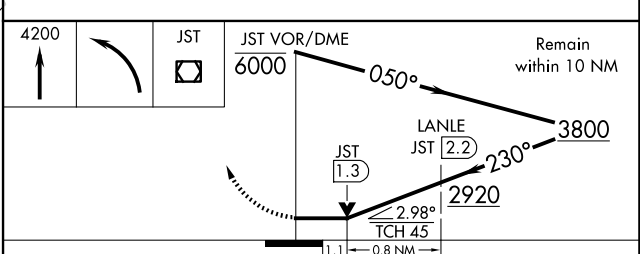
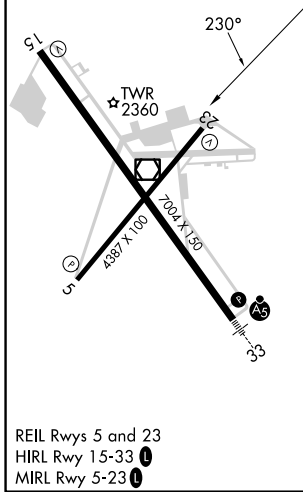
VOR Y RWY 23

JOHN MURTHA JOHNSTOWN/CAMBRIA COUNTY (JST)

Rwy 23 helicopter visibility reduction below 3/4 SM NA.		MISSED APPROACH: Climb to 4200 then left turn direct JST VOR/DME and hold.			
ATIS 118.325	JOHNSTOWN APP CON * 121.2 299.2	JOHNSTOWN TOWER * 125.75 (CTAF) 0	GND CON 121.6	CLNC DEL 126.85 235.775	UNICOM 122.95



ELEV 2284	D	TDZE 2284
-----------	----------	-----------



CATEGORY	A	B	C	D
S-23	2920-1	636 (700-1)	2920-1 ³ / ₄ 636 (700-1 ³ / ₄)	2920-2 636 (700-2)
C CIRCLING	2920-1	636 (700-1)	2920-1 ³ / ₄ 636 (700-1 ³ / ₄)	3000-2 ¹ / ₄ 716 (800-2 ¹ / ₄)
LANLE FIX MINIMUMS				
S-23	2660-1 376 (400-1)			2660-1 ¹ / ₄ 376 (400-1 ¹ / ₄)
C CIRCLING	2700-1 416 (500-1)	2880-1 596 (600-1)	2880-1 ¹ / ₂ 596 (600-1 ¹ / ₂)	3000-2 ¹ / ₄ 716 (800-2 ¹ / ₄)

VOR Y RWY 23

NE-4, 20 FEB 2025 to 20 MAR 2025

NE-4, 20 FEB 2025 to 20 MAR 2025