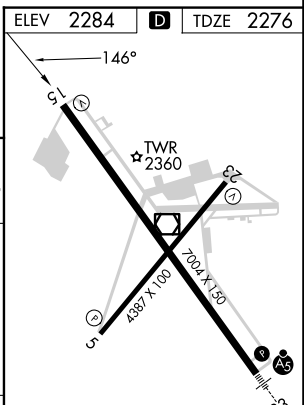
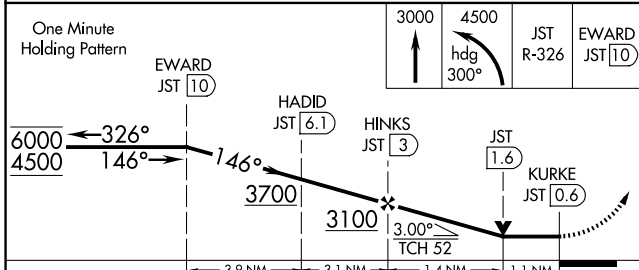
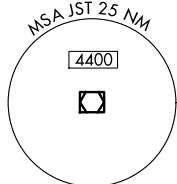
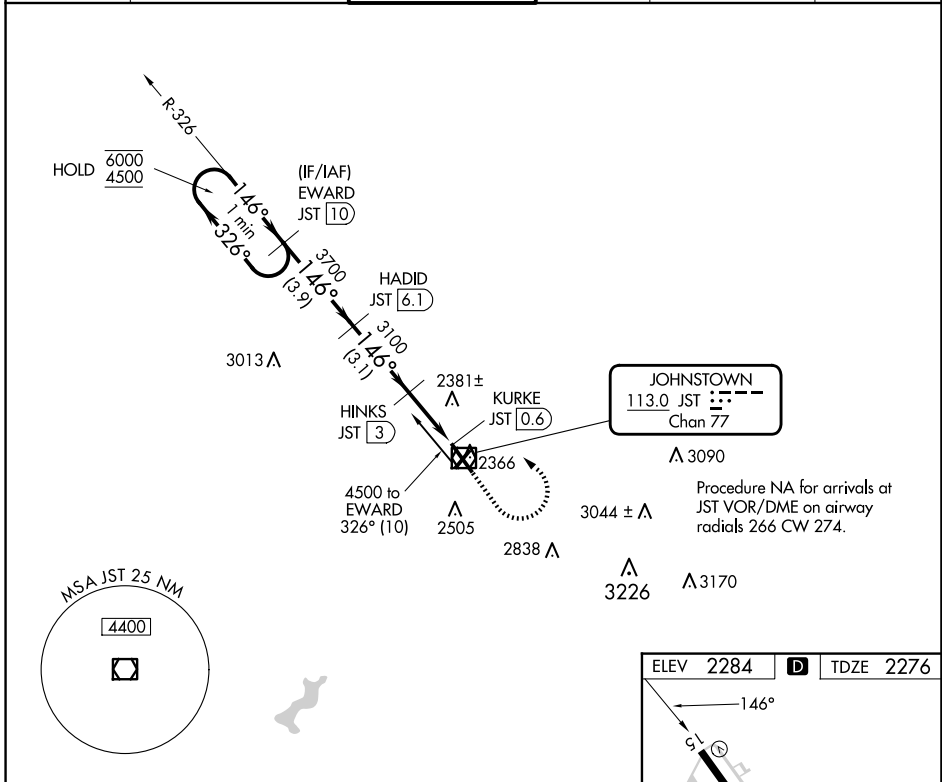


VOR/DME JST 113.0 Chan 77	APP CRS 146°	Rwy ldg TDZE Apt Elev 6698 2276 2284
---	------------------------	--

VOR Z RWY 15

JOHN MURTHA JOHNSTOWN/CAMBRIA COUNTY (JST)

DME required.		MISSED APPROACH: Climb to 3000 then climbing left turn to 4500 on heading 300° and JST VOR/DME R-326 to EWARD /10 DME and hold.			
ATIS 118.325	JOHNSTOWN APP CON * 121.2 299.2	JOHNSTOWN TOWER * 125.75 (CTAF) 0	GND CON 121.6	CLNC DEL 126.85 235.775	UNICOM 122.95



CATEGORY	A	B	C	D
S-15	2660-1	384 (400-1)	2660-1 1/8	384 (400-1 1/8)
CIRCLING	2700-1 416 (500-1)	2880-1 596 (600-1)	2880-1 1/2 596 (600-1 1/2)	3000-2 1/4 716 (800-2 1/4)

REIL Rwys 5 and 23
HIRL Rwy 15-33
MIRL Rwy 5-23

VOR Z RWY 15

NE-4, 20 FEB 2025 to 20 MAR 2025

NE-4, 20 FEB 2025 to 20 MAR 2025