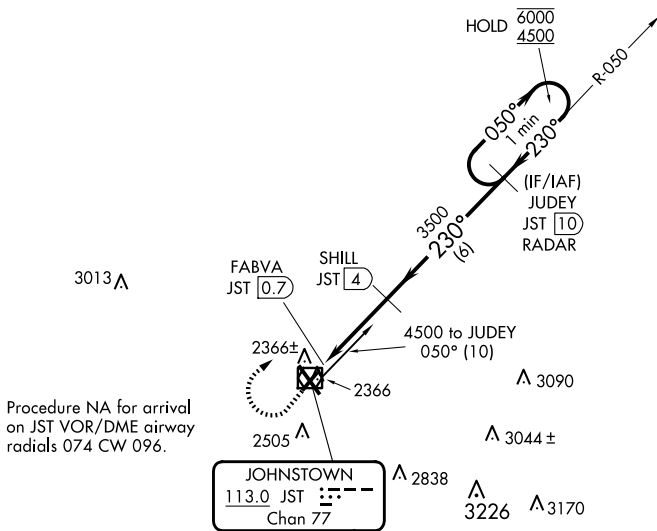


VOR/DME JST 113.0 Chan 77	APP CRS 230°	Rwy Idg TDZE Apt Elev	4387 2284 2284
---	------------------------	-----------------------------	---

VOR Z RWY 23

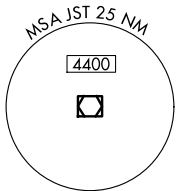
JOHN MURTHA JOHNSTOWN/CAMBRIA COUNTY (JST)

DME required.		MISSED APPROACH: Climb to 3000 then climbing right turn to 4500 on heading 075° and JST VOR/DME R-050 to JUDEY/JST 10 DME/RADAR and hold.			
Rwy 23 helicopter visibility reduction below 3/4 SM NA.					
ATIS 118.325	JOHNSTOWN APP CON ★ 121.2 299.2	JOHNSTOWN TOWER ★ 125.75 (CTAF)	GND CON 121.6	CLNC DEL 126.85 235.775	UNICOM 122.95

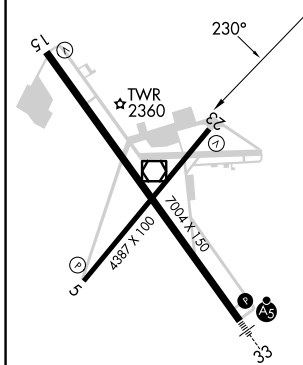


Procedure NA for arrival on JST VOR/DME airway radials 074 CW 096.

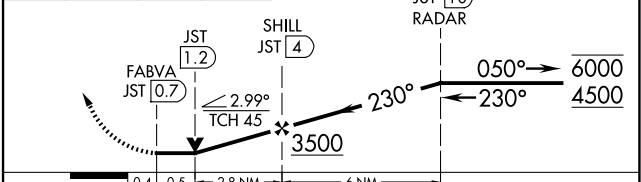
JOHNSTOWN
113.0 JST
Chan 77



ELEV 2284	D	TDZE 2284
-----------	----------	-----------



3000	4500	JST R-050	JUDEY JST 10 RADAR	One Minute Holding Pattern



CATEGORY	A	B	C	D
S-23	2620-1 336 (400-1)			
CIRCLING	2700-1 416 (500-1)	2880-1 596 (600-1)	2880-1½ 596 (600-1½)	3000-2¼ 716 (800-2¼)

REIL Rws 5 and 23
HIRL Rwy 15-33
MIRL Rwy 5-23

VOR Z RWY 23

NE-4, 20 FEB 2025 to 20 MAR 2025

NE-4, 20 FEB 2025 to 20 MAR 2025