

# HI-TACAN Z RWY 24R

TACAN NKX Chan <b>33</b>	APCH CRS <b>247°</b>	Rwy Idg TDZE Arpt Elev	24R <b>12,000</b> 24L <b>475</b> <b>477</b>	24L <b>8001</b> <b>477</b>
-----------------------------	-------------------------	------------------------------	---	-------------------------------

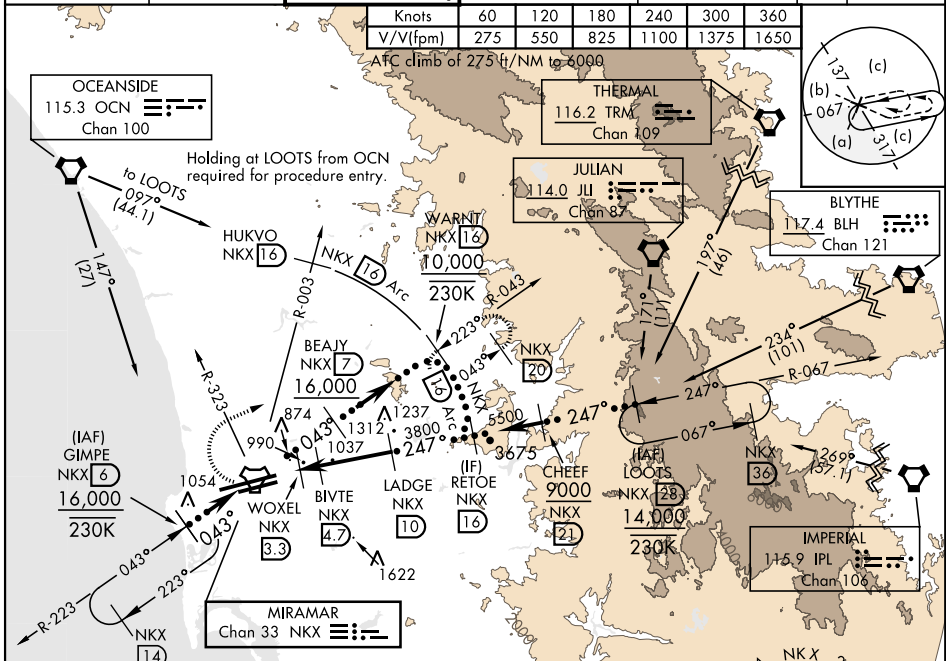
AL-903 [USN]  
MIRAMAR MCAS (JOE FOSS FLD) (KNKX)

\*When ALS inop, increase CAT CDE vis to 1 1/8 miles.  
 \*\* CAT E circling not authorized S of Rwy 6R-24L.

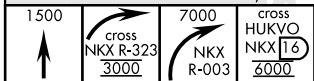


MISSED APPROACH: Climb to 1500, then climbing right turn to 7000 via NKX TACAN R-003 to HUKVO. Arc NE of NKX via 16 mile arc to WARNT and hold. Cross R-323 at 3000 mandatory, cross HUKVO at 6000 mandatory.

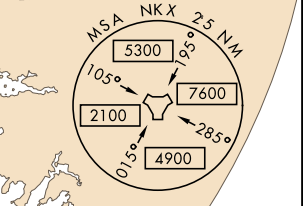
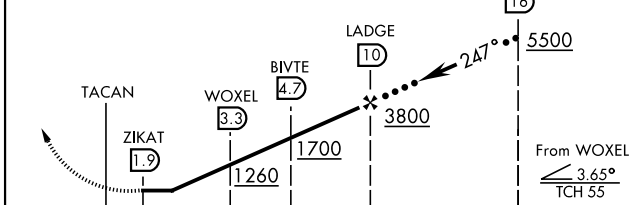
ATIS ★ <b>133.475 352.0</b>	SOCAL APP CON <b>132.2 269.1</b>	FOSS TOWER ★ <b>135.2 298.925 0</b>	GND CON <b>128.625 307.325</b>	CLNC DEL <b>125.975 254.325</b>	ASR/ PAR	LA CENTER <b>291.7</b>
--------------------------------	-------------------------------------	--	-----------------------------------	------------------------------------	-------------	---------------------------



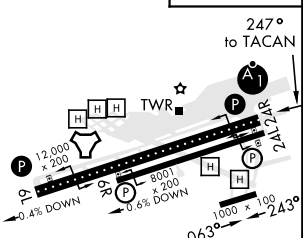
EMERG SAFE ALT 100 NM 13,600



VGS1 and descent angles not coincident.  
 RETOE 16 5500  
 From WOXEL 3.65° TCH 55



ELEV 477	TDZE 24R 475
	TDZE 24L 477



CATEGORY	C	D	E
S-24R *	1140-1 1/2	665 (700-1 1/2)	
SIDE-STEP 24L	1140-1 1/2 663 (700-1 1/2)	1140-2 663 (700-2)	1140-2 1/4 663 (700-2 1/4)
CIRCLING **	1140-1 1/2 663 (700-1 1/2)	1180-2 1/4 703 (800-2 1/4)	1360-3 883 (900-3)

# HI-TACAN Z RWY 24R

SW-3, 20 FEB 2025 to 20 MAR 2025

SW-3, 20 FEB 2025 to 20 MAR 2025