

20310

# TINNY-FOUR DEPARTURE (TINNY4 • TINNY)

MIRAMAR MCAS (JOE FOSS FLD) (KNKX)

SAN DIEGO, CALIFORNIA

SHL-903 [USN]

| Rwy   | Knots    | 60  | 120  | 180  | 240  | 300  | 360  |
|-------|----------|-----|------|------|------|------|------|
| 24L/R | V/V[fpn] | 780 | 1560 | 2340 | 3120 | 3900 | 4680 |

ATC Climb Rate to 2000

ATIS ★ 133.475 352.0  
 CLNC DEL 125.975 254.325  
 GND CON 128.625 307.325  
 FOSS TOWER ★ 135.2 298.925  
 SOCIAL DEP CON 119.6 363.1 W

SHAFTER  
115.4 EHF  
Chan 101  
L-3-1L7-H-4

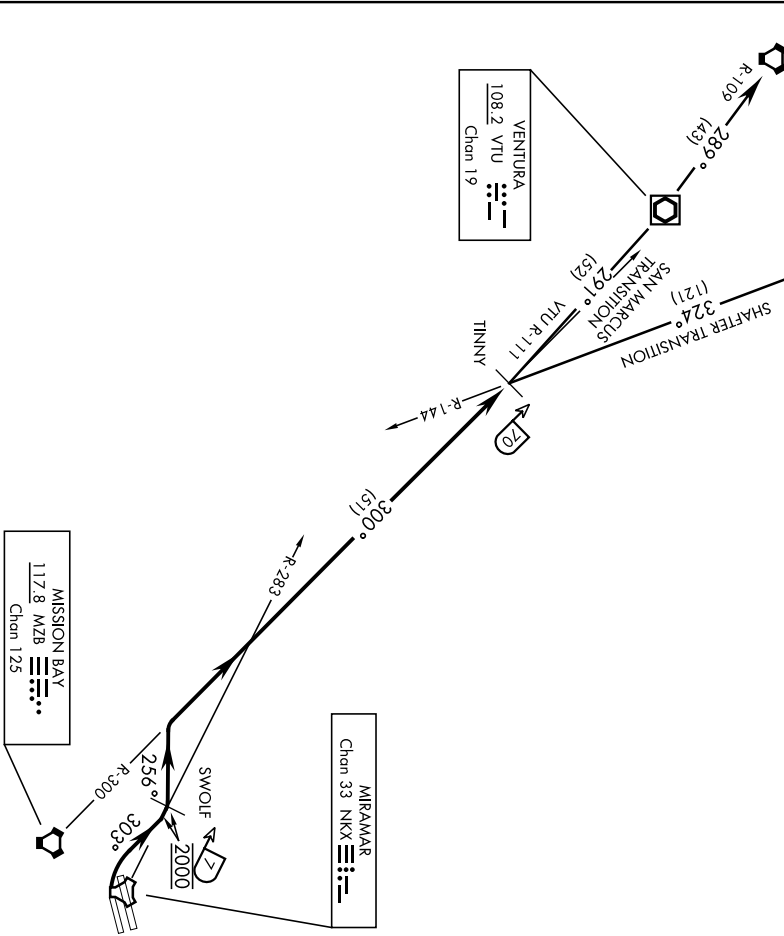
SAN MARCUS  
114.9 RZS  
Chan 96  
L-3-1L4-L7-H-4

VENTURA  
108.2 VTU  
Chan 19

MIRAMAR  
Chan 33 NKX

MISSION BAY  
117.8 MZB  
Chan 125

DO NOT EXCEED 300 KIAS  
UNTIL INTERCEPTING R-283



SW-3, 20 FEB 2025 to 20 MAR 2025

SW-3, 20 FEB 2025 to 20 MAR 2025

EMERG SAFE ALT 100 NM 13,600

# TINNY-FOUR DEPARTURE (TINNY4 • TINNY)

Orig 10OCT19

SAN DIEGO, CALIFORNIA  
MIRAMAR MCAS (JOE FOSS FLD) (KNKX)

20310

**TINNY-FOUR DEPARTURE (TINNY4•TINNY)**

MIRAMAR MCAS (JOE FOSS FLD) (KNKX)  
SAN DIEGO, CALIFORNIA

SHL-903 [USN]



**DEPARTURE ROUTE DESCRIPTION**

TAKE-OFF RWY 24L/R: Climbing right turn to 2000 heading 303° to intercept and proceed via NKX TAGAN R-283 to SWOLF. Complete turn within NKX 2 DME. Cross NKX R-283/3 DME at 2000 mandatory. Maintain 2000 at SWOLF mandatory. Then turn left heading 256 to intercept and proceed via MZB VORTAC R-300 to TINNY int. Thence...

SAN MARCUS TRANSITION (TINNY4•RZS): Via VTU VOR/DME R-1111 to VTU, then via RZS VORTAC R-109 to RZS.

SHAFTER TRANSITION (TINNY4•EHF): Via EHF VORTAC R-144 to EHF.

**TINNY-FOUR DEPARTURE (TINNY4•TINNY)**

Orig 10OCT19

SAN DIEGO, CALIFORNIA  
MIRAMAR MCAS (JOE FOSS FLD) (KNKX)