

# VITKO-THREE DEPARTURE (VITK03 • VITKO)

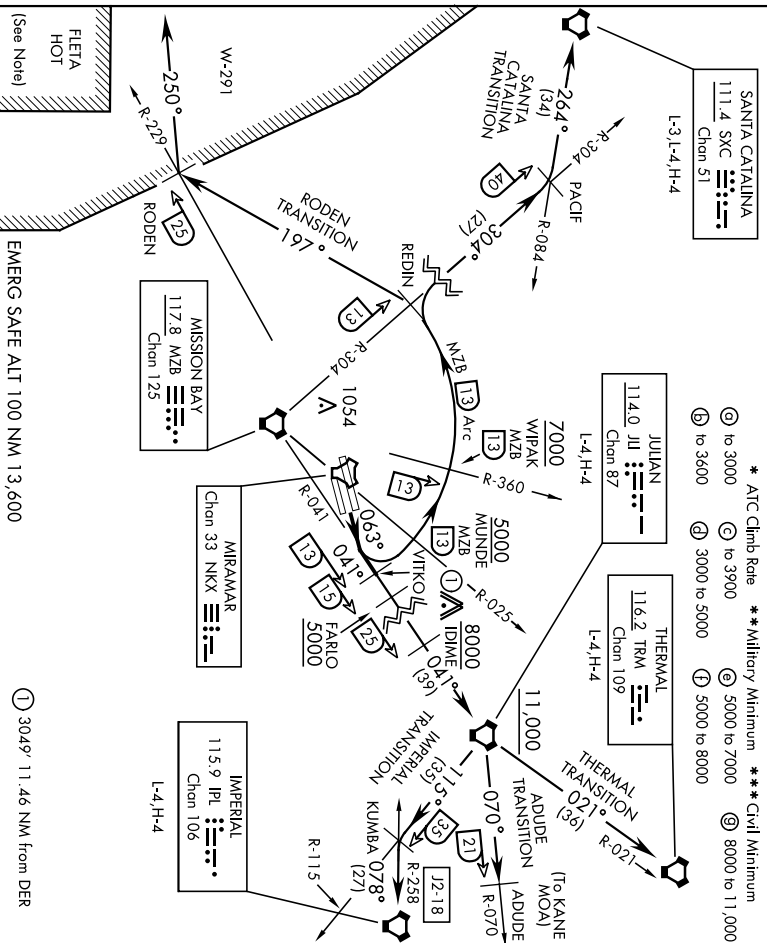
MIRAMAR MCAS (JOE FOSS FLD) (KNKKX)  
SAN DIEGO, CALIFORNIA

ATIS \* 133.475 352.0  
CLINC DEL 123.975 234.325  
GND CON 128.625 307.325  
FOSS TOWER \* 135.2 298.925  
SOCAL DEP CON 132.2 269.1 E

AL-903 [USN]

Rwy	Knots	60	120	180	240	300	360
* 6L/R	V/V(fpm)	570	1040	1560	2080	2600	3120
** 6L/R	V/V(fpm)	280	560	840	1120	1400	1680
*** 6L/R	V/V(fpm)	300	600	900	1200	1500	1800
* 6L/R	V/V(fpm)	880	1360	2040	2720	3400	4080
* 6L/R	V/V(fpm)	353	706	1059	1412	1765	2118
* 6L/R	V/V(fpm)	300	600	900	1200	1500	1800
* 6L/R	V/V(fpm)	220	440	660	880	1100	1320

\* ATC Climb Rate    \*\* Military Minimum    \*\*\* Civil Minimum  
 (A) to 3000    (B) to 3900    (C) 5000 to 7000    (D) 8000 to 11,000  
 (E) to 3600    (F) 3000 to 5000    (G) 5000 to 8000



## DEPARTURE ROUTE DESCRIPTION

▼ TAKEOFF Rwy 6L/R: Climb via heading 063° to intercept and proceed via MZB VORTAC R-041 to VITKO. Join MZB R-041 at or above 3000. Thence...

ADUDE TRANSITION (VITK03 • ADUDE): Via MZB R-041 to JLI VORTAC. Then JLI R-070 to ADUDE. Cross FARLO at or above 5000. Cross IDIME at or above 8000. Cross JLI VORTAC at or above 11,000. (To operate in KANE MOA.)

IMPERIAL TRANSITION (VITK03 • IPL): Via MZB R-041 to JLI VORTAC. Then via JLI R-115 to KUMBA INT, then via IPL VORTAC R-258 to IPL. Cross FARLO at or above 5000. Cross IDIME at or above 8000. Cross JLI VORTAC at or above 11,000.

(Continued on next page)

# VITKO-THREE DEPARTURE (VITK03 • VITKO)

SAN DIEGO, CALIFORNIA  
MIRAMAR MCAS (JOE FOSS FLD) (KNKKX)

22111

**VITKO-THREE DEPARTURE (VITK03 • VITKO)**

MIRAMAR MCAS (JOE FOSS FLD) (KNKX)  
SAN DIEGO, CALIFORNIA

AL-903 [USN]

**DEPARTURE ROUTE DESCRIPTION**

(Continued)

**RODEN TRANSITION (VITK03 • RODEN):** Arc N of MZB VORTAC

via the 13 mile arc to REDIN. Then turn left heading 197° to intercept NKK R-229 at RODEN. Then turn right heading 250° for entry into W-291. Cross MUNDE at or above 5000. Cross WIPAK at or above 7000.

**SANTA CATALINA TRANSITION (VITK03 • SXC):** Arc N of MZB VORTAC

via the 13 mile arc to REDIN. Then via MZB R-304 to PACIF INT. Then via SXC R-084 to SXC VORTAC. Cross MUNDE at or above 5000. Cross WIPAK at or above 7000.

**THERMAL TRANSITION (VITK03 • TRM):** Via MZB R-041 to JII VORTAC. Then via JII R-021 to TRM VORTAC. Cross FARLO at or above 5000. Cross IDIME at or above 8000. Cross JII VORTAC at or above 11,000.

**NOTE:**

- (1) FLETA HOT-ACTIVE FIRING AREA (DANGER, REMAIN CLEAR)
- (2) ALL AIRCRAFT SHOULD MAINTAIN LAST ASSIGNED HEADING/RADIAL AND ALTITUDE TO AVOID INBOUND MILITARY OR CIVIL AIRCRAFT AT HIGHER ALTITUDES!

**VITKO-THREE DEPARTURE (VITK03 • VITKO)**

Orig 13SEP18

SAN DIEGO, CALIFORNIA  
MIRAMAR MCAS (JOE FOSS FLD) (KNKX)