

APP CRS	Rwy Idg	7345
144°	TDZE	119
	Apt Elev	153

RNAV (GPS) RWY 14

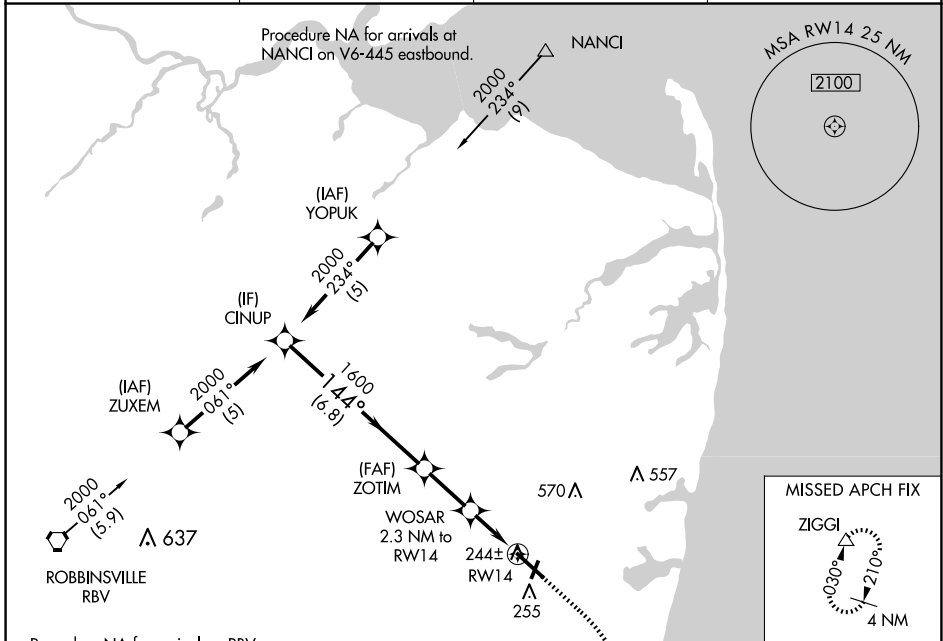
MONMOUTH EXEC (BLM)

RNP APCH.

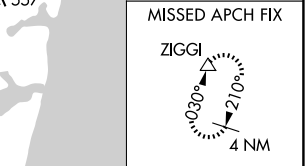
▼ Circling Rwy 3, 21 NA at night. Rwy 14 helicopter visibility reduction below 3/4 SM NA.
▲ VDP NA when using Lakehurst altimeter setting. When local altimeter setting not received, use Lakehurst altimeter setting; increase all MDA 40 feet and LNAV Cats C/D visibility 1/8 SM and Circling Cat C/D visibility 1/4 SM.

MISSED APPROACH:
 Climb to 600 then climbing right turn to 2000 direct ZIGGI and hold.

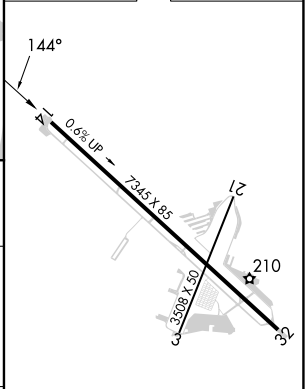
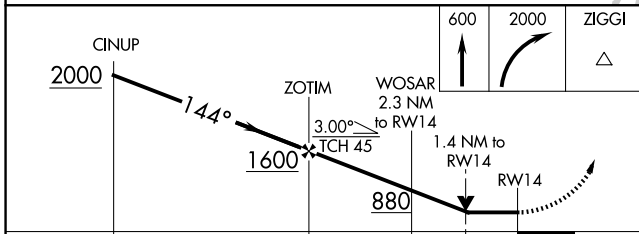
AWOS-3PT 121.625	MC GUIRE APP CON 126.475 363.8	CLNC DEL 126.15	UNICOM 123.0 (CTAF)
----------------------------	--	---------------------------	-------------------------------



Procedure NA for arrival on RBV
 VORTAC airway radials 001 CW 122.



ELEV 153	TDZE 119
----------	----------



	6.8 NM		2.2 NM		0.9 NM		1.4 NM	
CATEGORY	A		B		C		D	
LNAV MDA	500-1		381 (400-1)		500-1 1/8		381 (400-1 1/8)	
CIRCLING	560-1		620-1		880-2		880-2 1/4	
	407 (500-1)		467 (500-1)		727 (800-2)		727 (800-2 1/4)	

MIRL Rwy 14-32
 REIL Rwy 14

NE-2, 20 FEB 2025 to 20 MAR 2025

NE-2, 20 FEB 2025 to 20 MAR 2025