

WAAS CH 43569 W14A	APP CRS 144°	Rwy Idg 7345 TDZE 119 Apt Elev 153
--	------------------------	---

RNAV (GPS) Z RWY 14

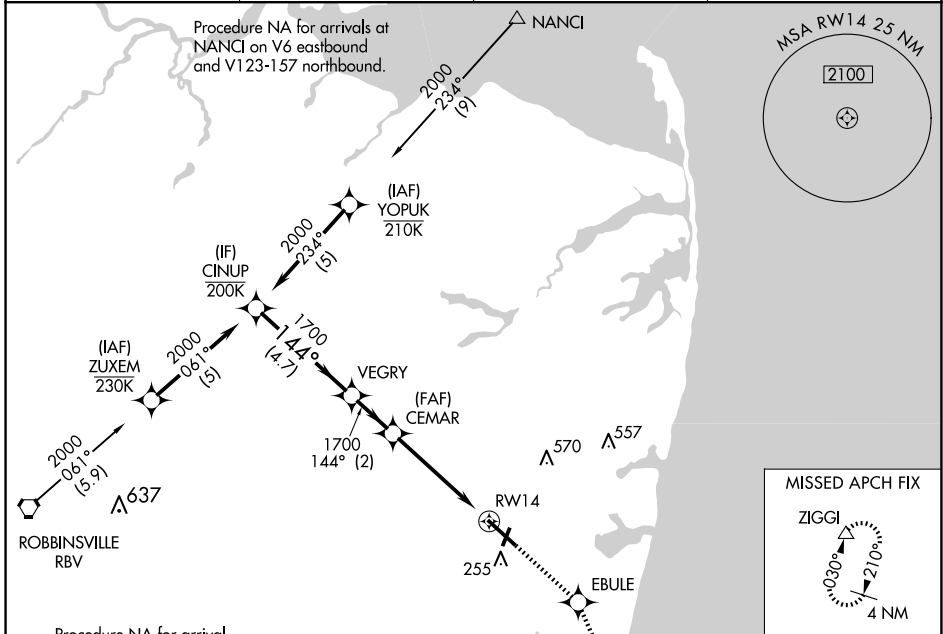
MONMOUTH EXEC (BLM)

RNP APCH - GPS.

▼ For uncompensated Baro-VNAV systems, LNAV/VNAV NA below -15°C or above 54°C. Rwy 14 helicopter visibility reduction below 3/4 SM NA. When local altimeter setting not received, use Lakehurst altimeter setting and increase all DA by 39 feet. Baro-VNAV NA when using Lakehurst altimeter setting.

MISSED APPROACH:
Climb to 2000 direct
EBULE, track 169° to
ZIGGI and hold.

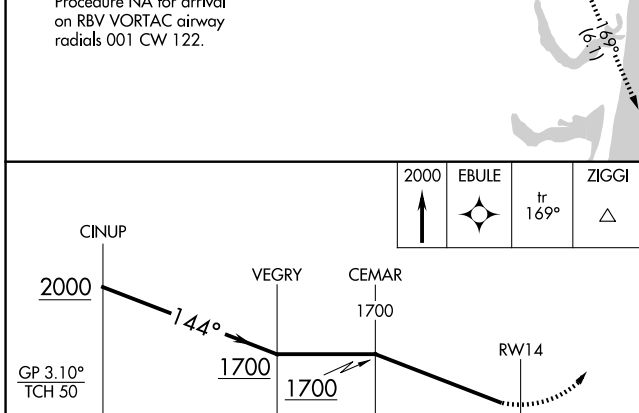
AWOS-3PT 121.625	MC GUIRE APP CON 126.475 363.8	CLNC DEL 126.15	UNICOM 123.0 (CTAF)
----------------------------	--	---------------------------	-------------------------------



NE-2, 20 FEB 2025 to 20 MAR 2025

NE-2, 20 FEB 2025 to 20 MAR 2025

ELEV 153	TDZE 119
----------	----------



CATEGORY	A	B	C	D
LPV DA	369-1 250 (300-1) 250 (300-1)			
LNAV/VNAV DA	369-1	250 (300-1)	372-1 253 (300-1)	383-1 264 (300-1)

