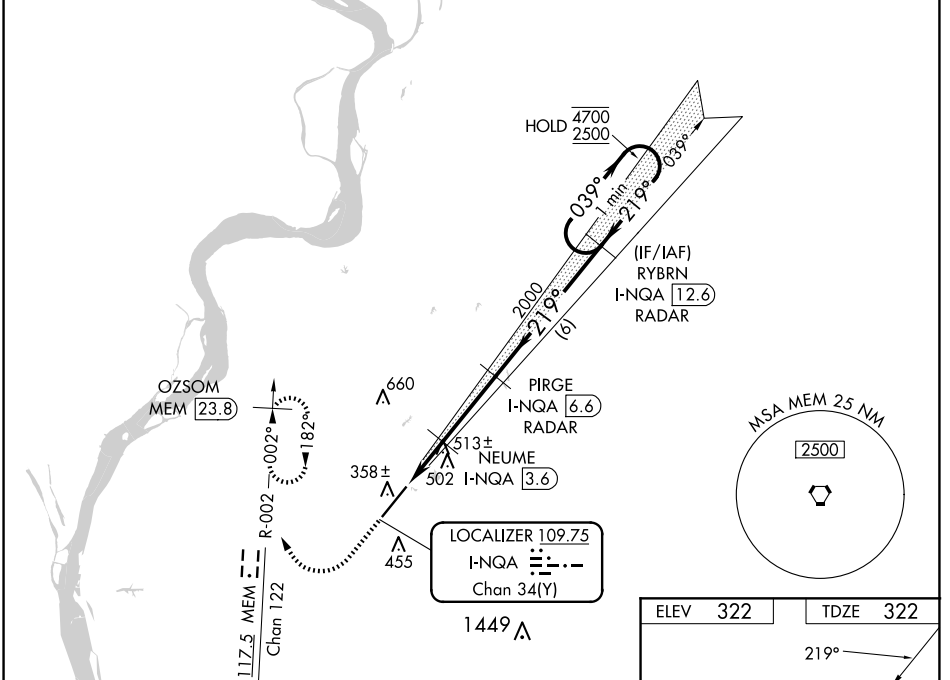


LOC/DME I-NQA 109.75 Chan 34 (Y)	APP CRS 219°	Rwy Idg TDZE Apt Elev	8001 322 322
---	------------------------	-----------------------------	---

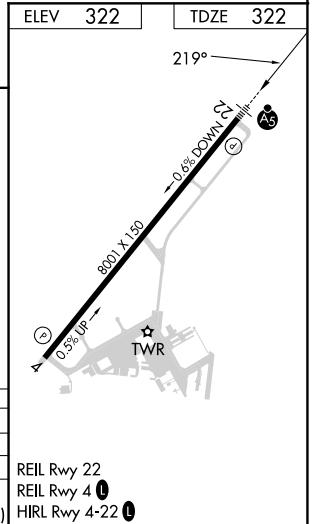
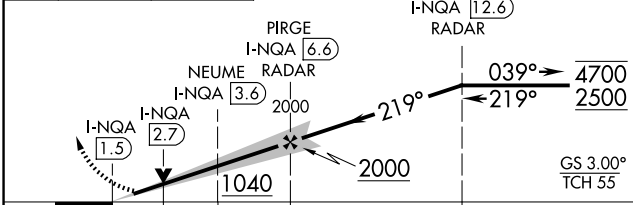
ILS or LOC RWY 22
MILLINGTON/MEMPHIS (NQA)

RADAR required for procedure entry. DME required.		MALSR	MISSED APPROACH: Climb to 1000 then climbing right turn to 3000 and on MEM VORTAC R-002 to OZSOM/MEM 23.8 DME and hold, continue climb-in-hold to 3000.
<p>▼ S-ILS 22 procedure NA when control tower closed if ceiling/visibility lower than 800/2. For inop ALS, increase S-ILS 22 Cat E visibility to ¾ SM and S-LOC 22 Cat E visibility to 1½ SM.</p>			

AWOS-3 118.925	MEMPHIS APP CON 119.1 291.6 (176°-355°) 125.8 338.3 (356°-175°)	MILLINGTON TOWER ★ 120.25 (CTAF) 340.2	GND CON 121.375	UNICOM 122.95
--------------------------	---	---	---------------------------	-------------------------



1000	3000	OZSOM MEM (23.8)	VGSI and ILS glidepath not coincident (VGSI Angle 3.00/TCH 67). One Minute Holding Pattern
		MEM R-002	



CATEGORY	A	B	C	D	E
S-ILS 22	522-½ 200 (200-½)				
S-LOC 22	780-½	458 (500-½)	780-¾	458 (500-¾)	
CIRCLING	800-1 478 (500-1)	820-1 498 (500-1)	920-1½ 598 (600-1½)	960-2 638 (700-2)	960-2¼ 638 (700-2¼)

REIL Rwy 22
REIL Rwy 4 **0**
HIRL Rwy 4-22 **0**