




LOC I-GNK 110.9	APP CRS 311°	Rwy ldg TDZE Apt Elev 6499 681 694
---------------------------	------------------------	--


ILS or LOC RWY 31

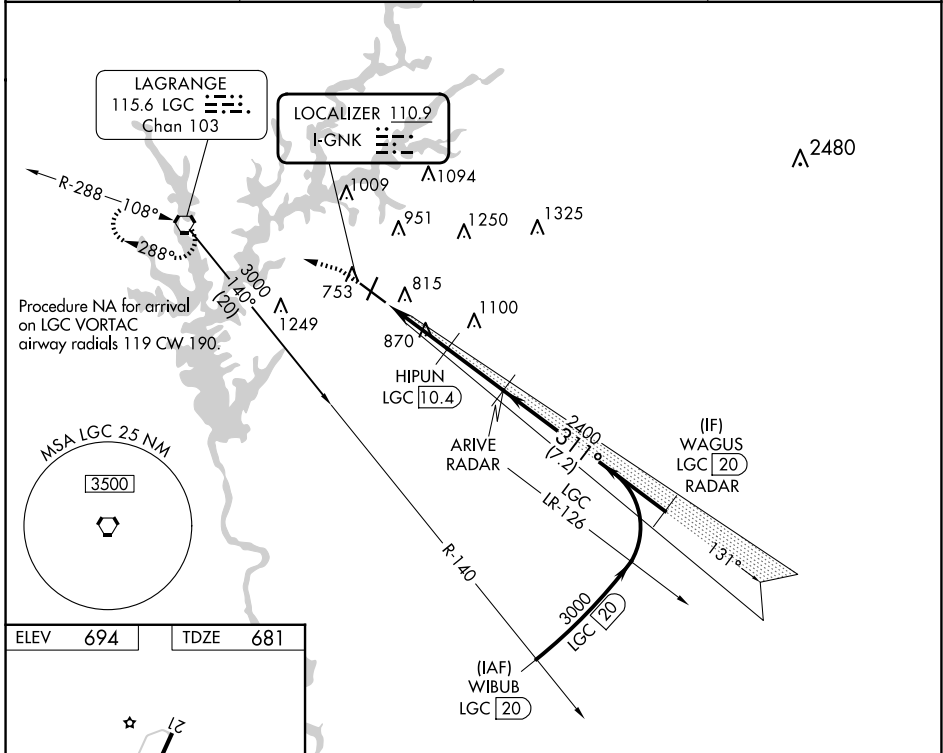
LAGRANGE/CALLAWAY (LGC)

DME required for procedure entry.
RADAR and DME required for LOC only.

MALSR  MISSED APPROACH: Climb to 1200 then climbing left turn to 2400 direct LGC VORTAC and hold.

 Circling Rwy 13, 21 NA at night. DME from LGC VORTAC.
 Simultaneous reception of I-GNK and LGC DME required.

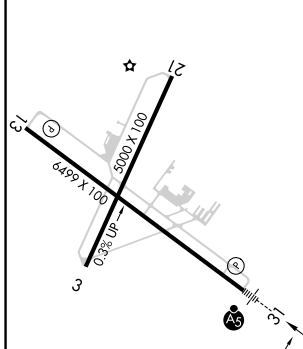
AWOS-3 126.325	ATLANTA APP CON★ 125.5 323.1	CINC DEL 119.25	UNICOM 122.975 (CTAF) 
--------------------------	--	---------------------------	---



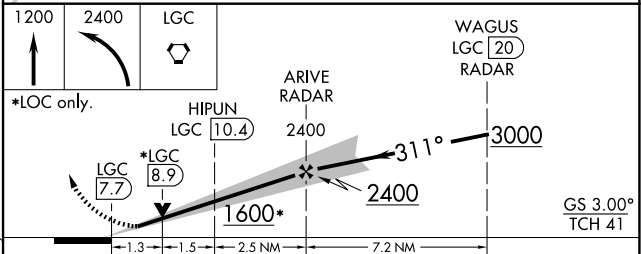
SE-4, 20 FEB 2025 to 20 MAR 2025


SE-4, 20 FEB 2025 to 20 MAR 2025

ELEV 694	TDZE 681
----------	----------



REIL Rwy 13	HIRL Rwy 13-31 
-------------	--



CATEGORY	A	B	C	D
S-ILS 31	881-½		200 (200-½)	
S-LOC 31	1120-½	439 (500-½)	1120-¾	439 (500-¾)
 CIRCLING	1280-1	586 (600-1)	1540-2½	1600-3
			846 (900-2½)	906 (1000-3)