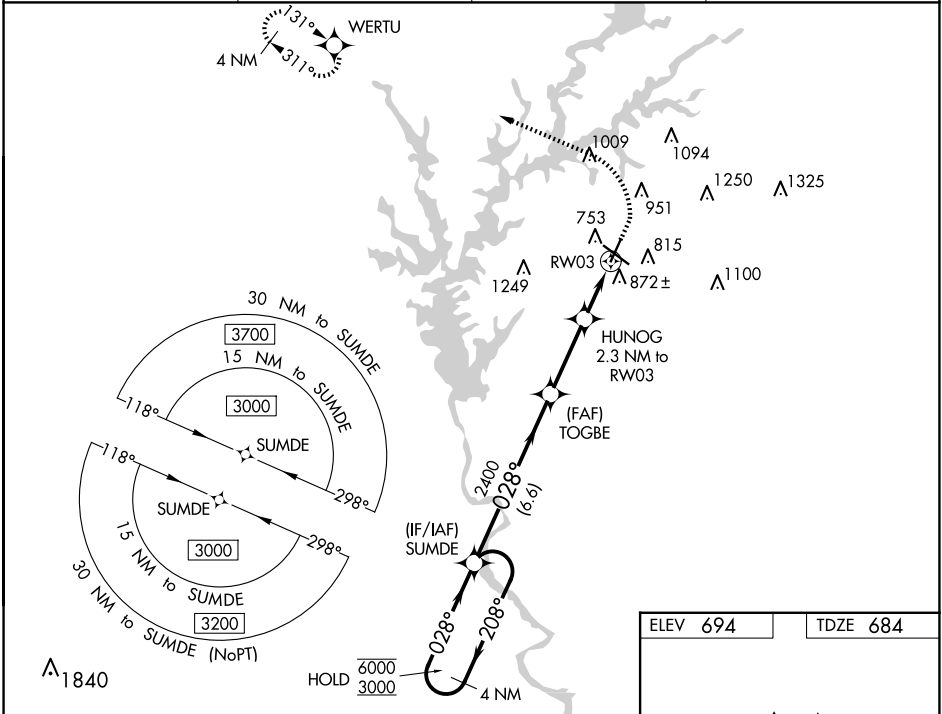


WAAS CH 69243 W03A	APP CRS 028°	Rwy Idg TDZE 684 Apt Elev 694	5000
--	------------------------	---	-------------

RNAV (GPS) RWY 3

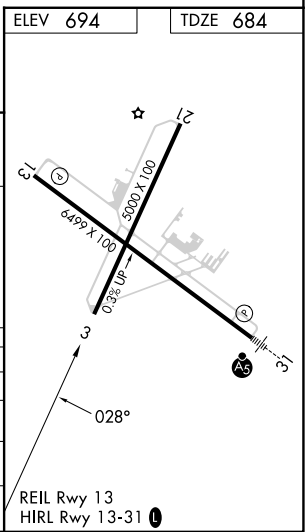
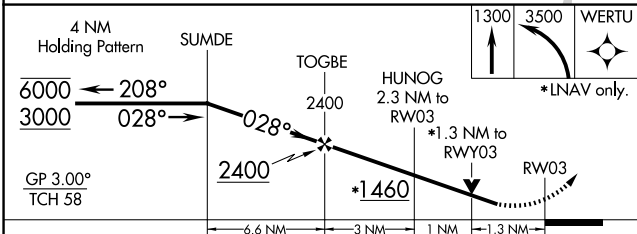
LAGRANGE/CALLAWAY (LGC)

RNP APCH. ⚠ Circling Rwy 13, 21 NA at night. ⚠ Rwy 3 helicopter visibility reduction below 3/4 SM NA. For uncompensated Baro-VNAV systems, LNAV/VNAV NA below -16°C or above 54°C.		MISSED APPROACH: Climb to 1300 then climbing left turn to 3500 direct WERTU and hold, continue climb-in-hold to 3500.	
AWOS-3 126.325	ATLANTA APP CON* 125.5 323.1	CLNC DEL 119.25	UNICOM 122.975 (CTAF) 📻



SE-4, 20 FEB 2025 to 20 MAR 2025

SE-4, 20 FEB 2025 to 20 MAR 2025



CATEGORY	A	B	C	D
LPV DA		1064-1	380 (400-1)	
LNAV/VNAV DA		1044-1	360 (400-1)	
LNAV MDA	1140-1	456 (500-1)	1140-1 3/8	456 (500-1 3/8)
C CIRCLING	1280-1	586 (600-1)	1540-2 1/2 846 (900-2 1/2)	1600-3 906 (1000-3)