

RIDGECREST, CALIFORNIA

# HI-TACAN RWY 32

TACAN NID Chan 53	APCH CRS 313°	Rwy ldg TDZE Arprt Elev	9013 2241 2288
----------------------	------------------	-------------------------------	----------------------

-(USN)

CHINA LAKE NAW'S (ARMITAGE FLD) (KNID)

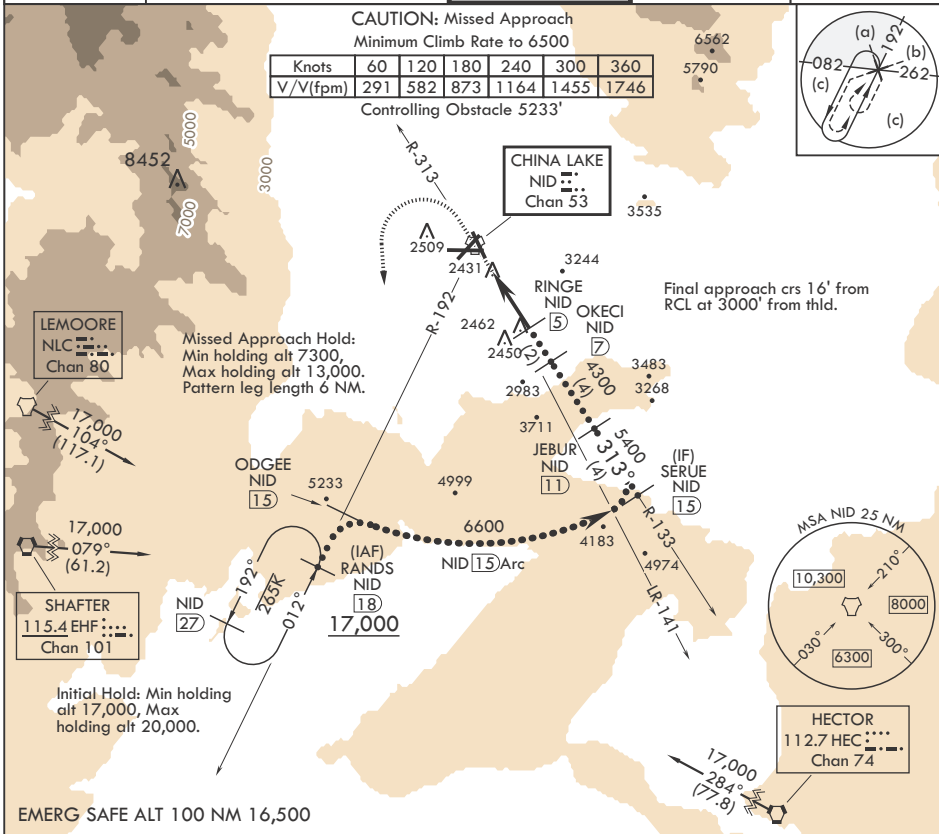
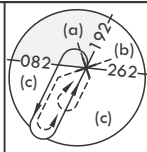
**MISSED APPROACH:** Climb to 3600 then a climbing left turn to 7300 to intercept China Lake TACAN R-192 to RANDS and hold.

ATIS★ 322.375	JOSHUA APP CON/DEP CON 133.65 348.7	TOWER★ 120.15 340.2	GND CON 350.3	CLNC DEL 254.25
------------------	--	------------------------	------------------	--------------------

**CAUTION: Missed Approach**  
Minimum Climb Rate to 6500

Knots	60	120	180	240	300	360
V/V(fpm)	291	582	873	1164	1455	1746

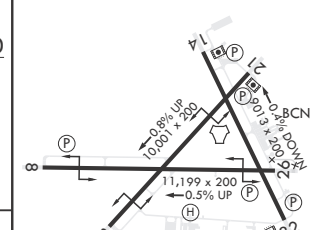
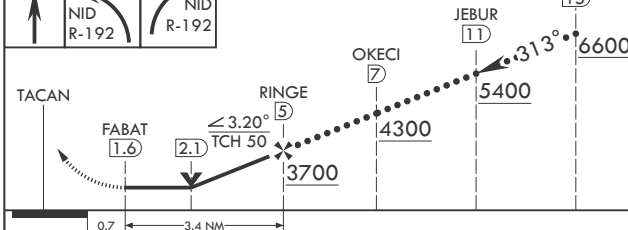
Controlling Obstacle 5233'



SW-3, 20 FEB 2025 to 20 MAR 2025

SW-3, 20 FEB 2025 to 20 MAR 2025

3600	7300	TDZE 2241
------	------	-----------



CATEGORY	C	D	E
S-32	2720-1 $\frac{3}{8}$	479	(500-1 $\frac{3}{8}$ )
CIRCLING	2820-1 $\frac{1}{2}$ 536 (600-1 $\frac{1}{2}$ )	3500-3 1216 (1300-3)	NA

HIRL all Rwys

RIDGECREST, CALIFORNIA

35°41'N - 117°42'W

CHINA LAKE NAW'S (ARMITAGE FLD) (KNID)

Amdt 5 10SEP20

# HI-TACAN RWY 32