

RIDGECREST, CALIFORNIA

RNAV (GPS) RWY 32

APCH CRS	Rwy Idg	9013
321°	TDZE	2241
	Arprt Elev	2288

- (USN)

CHINA LAKE NAWS (ARMITAGE FLD) (KNID)

RNP APCH

MISSED APPROACH: Climb to 2800 then climbing left turn to 8100 direct CIBIV and hold, continue climb-in-hold to 8100.

RADAR required



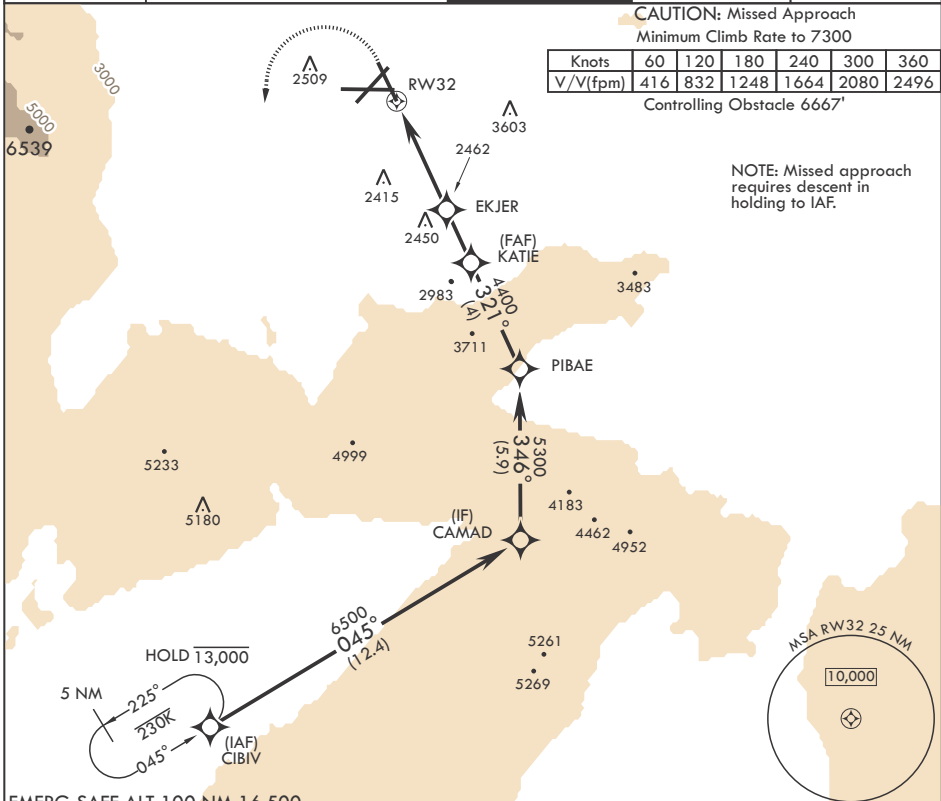
ATIS* 322.375	JOSHUA APP CON/DEP CON 133.65 348.7	TOWER* 120.15 340.2	GND CON 350.3	CLNC DEL 254.25
------------------	--	------------------------	------------------	--------------------

CAUTION: Missed Approach
Minimum Climb Rate to 7300

Knots	60	120	180	240	300	360
V/V(fpm)	416	832	1248	1664	2080	2496

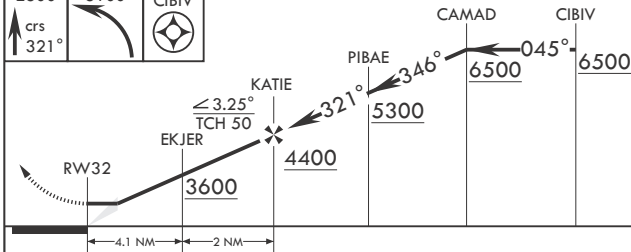
Controlling Obstacle 6667'

NOTE: Missed approach requires descent in holding to IAF.

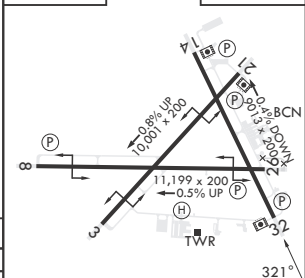


EMERG SAFE ALT 100 NM 16,500

2800	8100	CIBIV
↑ crs 321°	↙	



ELEV 2288	TDZE 2241
-----------	-----------



CATEGORY	A	B	C	D
LNAV MDA	2660-1	419 (400-1)	2660-1½	419 (400-1½)
CI CIRCLING	2740-1 456 (500-1)	2820-1 536 (600-1)	2820-1½ 536 (600-1½)	3520-3 1236 (1300-3)

HIRL all Rwys

RIDGECREST, CALIFORNIA

35°41'N - 117°42'W

CHINA LAKE NAWS (ARMITAGE FLD) (KNID)

Amdt 5 10SEP20

RNAV (GPS) RWY 32

SW-3, 20 FEB 2025 to 20 MAR 2025

SW-3, 20 FEB 2025 to 20 MAR 2025