

TACAN Y RWY 03

TACAN NID Chan 53	APCH CRS 034°	Rwy Idg 10,001
		TDZE 2284
		Arpt Elev 2288

[USN]

CHINA LAKE NAWS (ARMITAGE FLD) (KNID)

RADAR required
▼

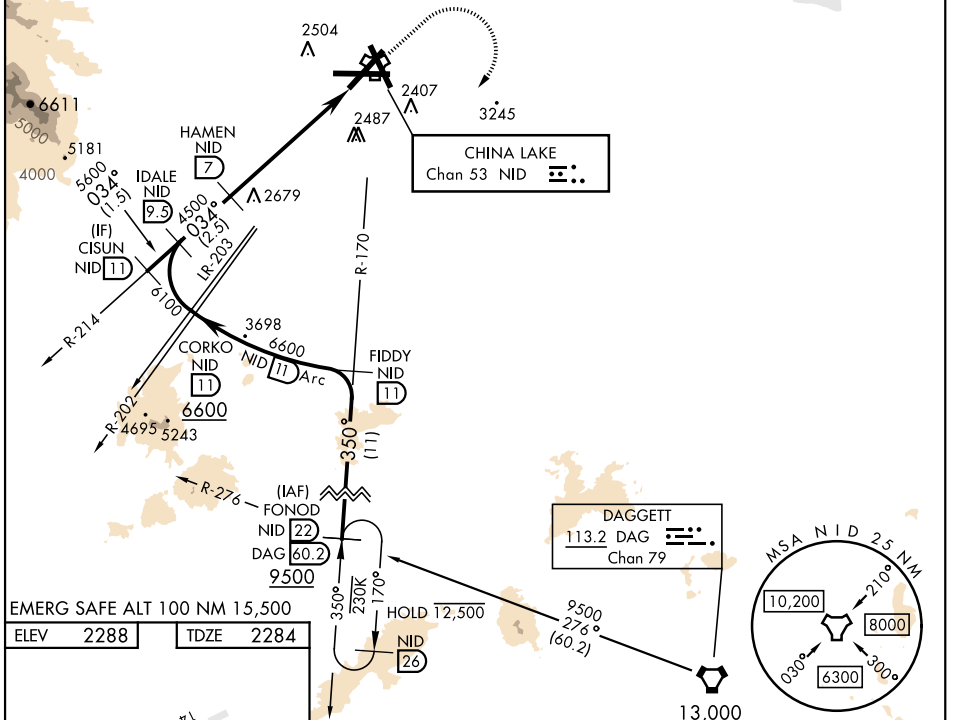
MISSED APPROACH: Climb to 3600 then climbing right turn to 9500 to intercept NID TACAN R-170 to FONOD and hold.
Minimum climb gradient 370 to 9500.

ATIS★ 322.375	JOSHUA APP/DEP CON 133.65 348.7	TOWER★ 120.15 340.2	GND CON 350.3	CLNC DEL 254.25
------------------	------------------------------------	------------------------	------------------	--------------------

Knots	60	120	180	240	300	360
V/V(fpm)	370	740	1110	1480	1850	2220
Min climb of 370 ft/NM to 9500 - Controlling Obstacle Unk						

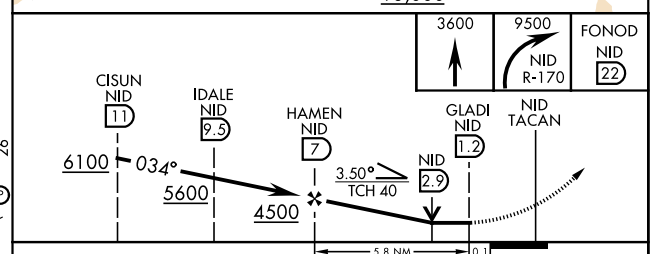
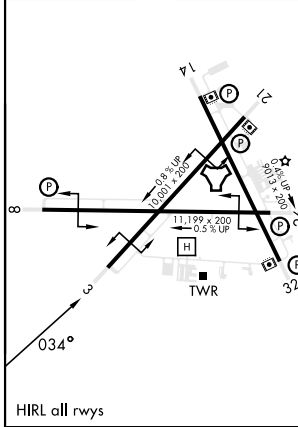
CAUTION: Short Intermediate Segment (4 NM), recommend early configuration.

CAUTION: DG from CISUN to IDALE 333 ft/NM.
IDALE to HAMEN 440 ft/NM.



EMERG SAFE ALT 100 NM 15,500

ELEV 2288	TDZE 2284
-----------	-----------



CATEGORY	A	B	C	D
S-03	2980-1 696 (700-1)		2980-2 696 (700-2)	
CIRCLING	2980-1 696 (700-1)		2980-2 696 (700-2)	3560-3 1276 (1300-3)

TACAN Y RWY 03

SW-3, 20 FEB 2025 to 20 MAR 2025

SW-3, 20 FEB 2025 to 20 MAR 2025