

BEAUFORT, SOUTH CAROLINA

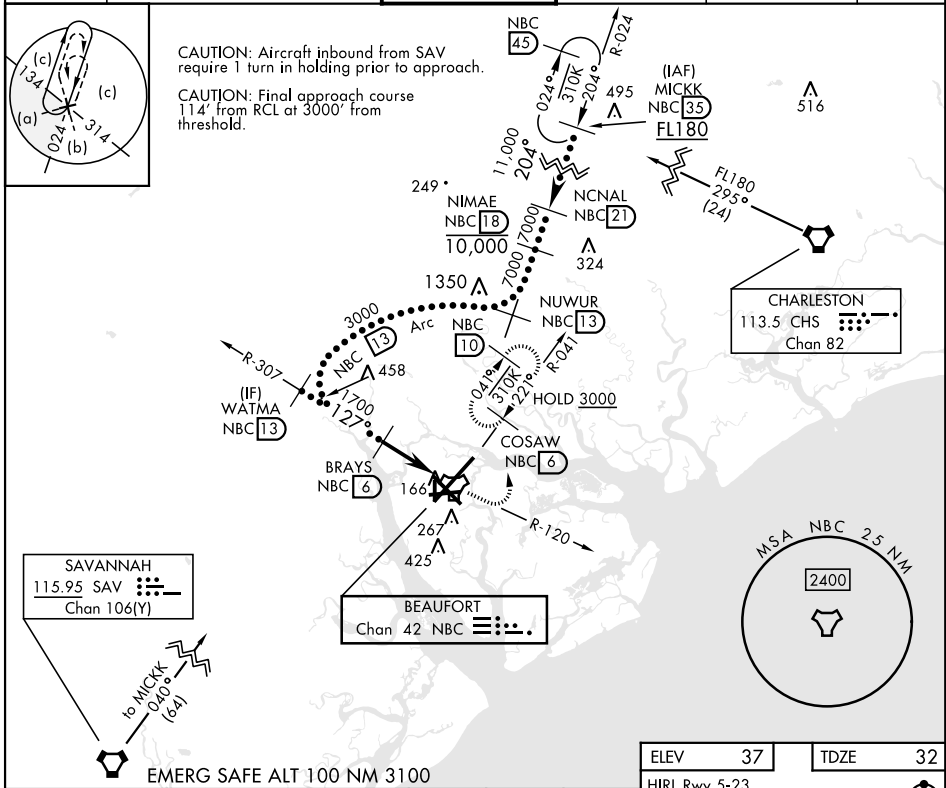
HI-TACAN Z RWY 14

TACAN NBC Chan 42	APCH CRS 127°	Rwy ldg TDZE Arprt Elev 8000 32 37	[USN]	BEAUFORT MCAS (MERRITT FLD) (KNBC)
-----------------------------	-------------------------	--	-------	------------------------------------

RADAR required

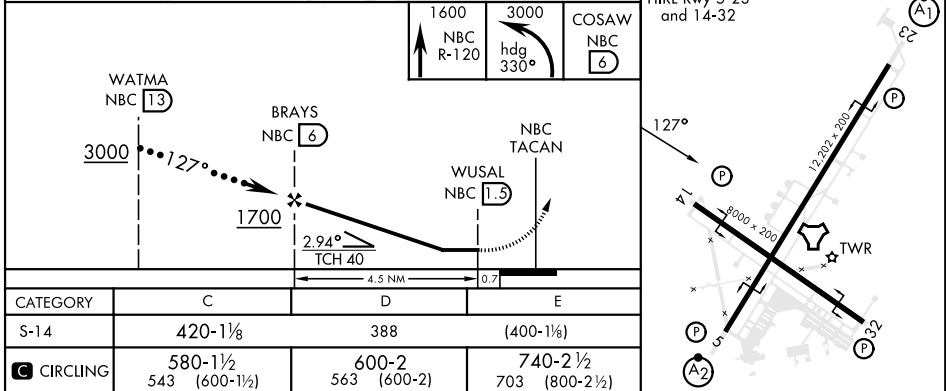
▼ MISSED APPROACH: Climb to 1600 on NBC TACAN R-120, then climbing left turn to 3000 via hdg 330° to intercept NBC R-041 to 6 DME (COSAW) and hold. Continue climb in hold to 3000.

ATIS ★ 279.525	APP CON (ABV 3000) 125.125 292.125 (3000 and BLW) 123.7 269.125	TOWER ★ 119.05 342.875	GND CON 128.15 348.625	CLNC DEL 128.15 254.375	ASR/PAR
--------------------------	---	----------------------------------	----------------------------------	-----------------------------------	---------



SE-2, 20 FEB 2025 to 20 MAR 2025

SE-2, 20 FEB 2025 to 20 MAR 2025



BEAUFORT, SOUTH CAROLINA

32° 29' N-80° 43' W

BEAUFORT MCAS (MERRITT FLD) (KNBC)

Amtd 4 11JUL24

HI-TACAN Z RWY 14