

HI-TACAN Z RWY 23

TACAN Chan 42	NBC 221°	APCH CRS 221°	Rwy ldg 12,202 TDZE 16 Arpt Elev 37
-------------------------	--------------------	-------------------------	--

[USN]

BEAUFORT MCAS (MERRITT FLD) (KNBC)

▼ *When ALS inop, increase vis to 1 mile.

MISSED APPROACH: Climb to 500, then climbing right turn to 3000, intercept NBC TACAN R-307 direct BRAYS and hold.

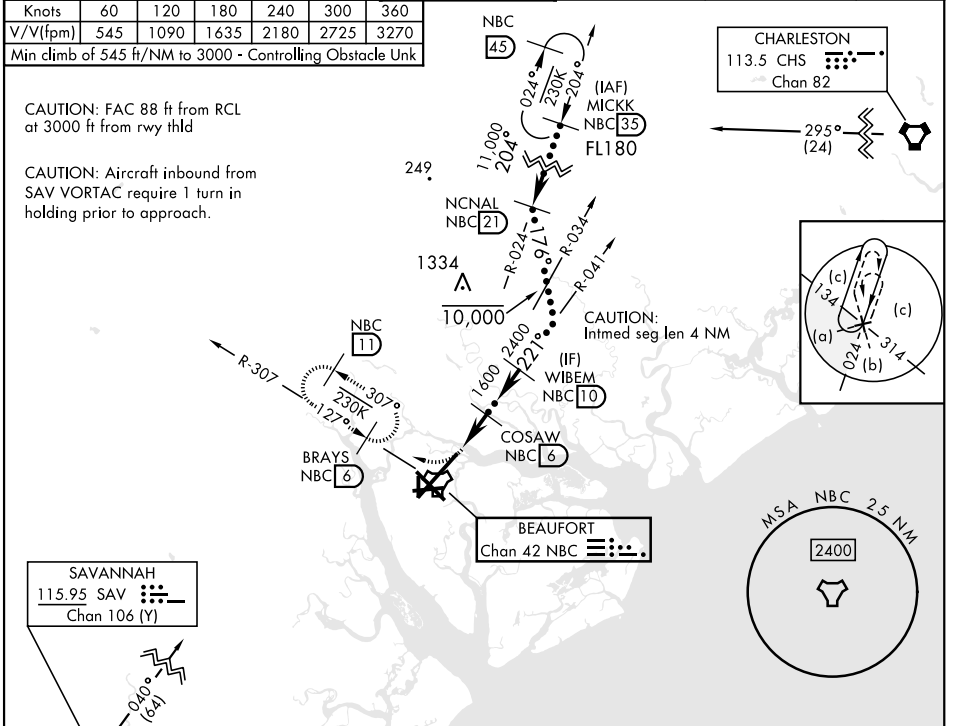
ATIS ★ 279.525	APP CON (ABV 3000) 125.125 292.125 123.7 269.125	TOWER ★ 119.05 342.875	GND CON 128.15 348.625	CLNC DEL 128.15 254.375	ASR/PAR
--------------------------	--	----------------------------------	----------------------------------	-----------------------------------	---------

Knots	60	120	180	240	300	360
V/V(fpm)	545	1090	1635	2180	2725	3270

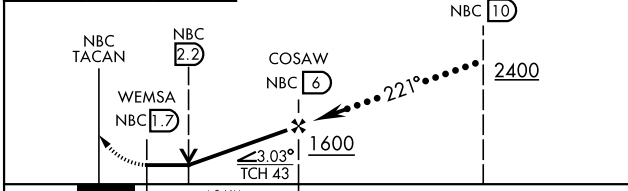
Min climb of 545 ft/NM to 3000 - Controlling Obstacle Unk

CAUTION: FAC 88 ft from RCL at 3000 ft from rwy thld

CAUTION: Aircraft inbound from SAV VORTAC require 1 turn in holding prior to approach.

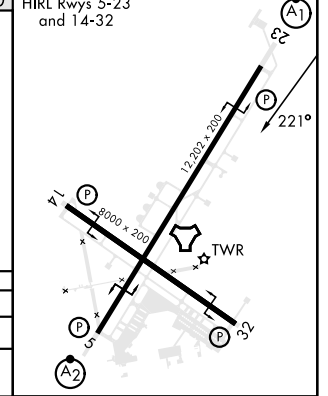


EMERG SAFE ALT 100 NM 3100



CATEGORY	C	D	E
S-23 *	380-¾	364	(400-¾)
CIRCLING	580-1½ 543 (600-1½)	600-2 563 (600-2)	740-2½ 703 (800-2½)

ELEV	37	TDZE	16
------	----	------	----



HI-TACAN Z RWY 23

SE-2, 20 FEB 2025 to 20 MAR 2025

SE-2, 20 FEB 2025 to 20 MAR 2025