

# RNAV (GPS) RWY 23

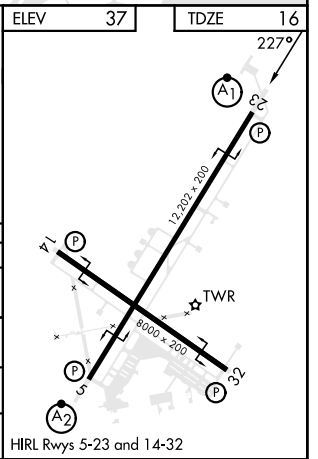
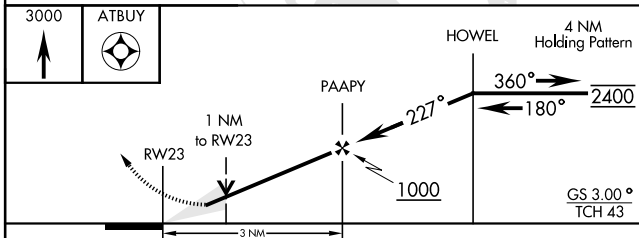
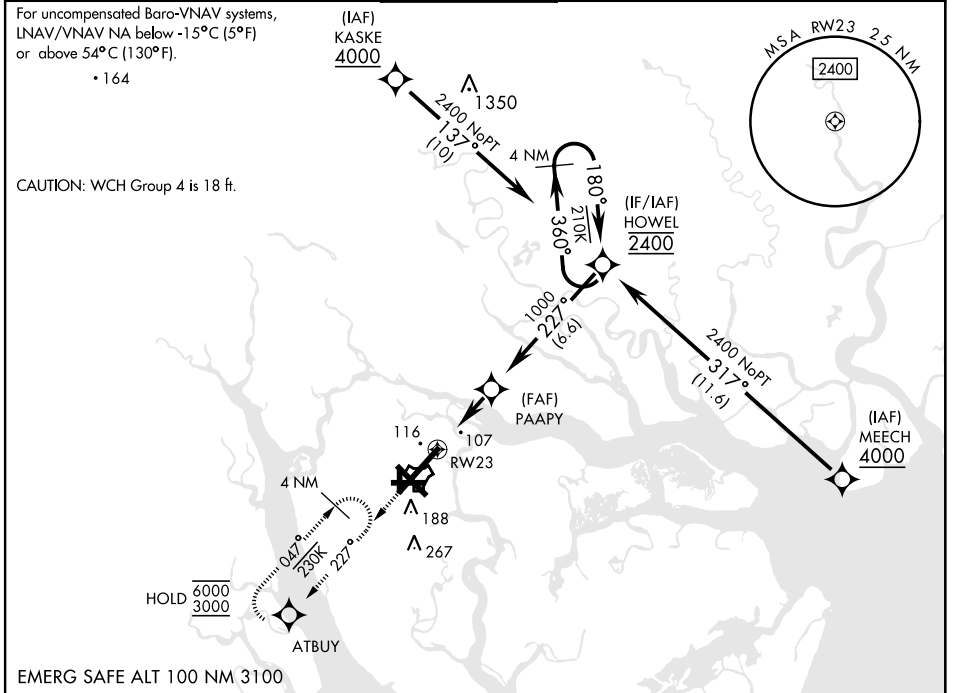
WAAS Chan <b>93379</b> <b>W23A</b>	APCH CRS <b>227°</b>	Rwy Idg <b>12,202</b> TDZE <b>16</b> Arprt Elev <b>37</b>
--	-------------------------	---

[USN]

BEAUFORT MCAS (MERRITT FLD) (KNBC)

RNP APCH	ALSIF-1 	MISSED APPROACH: Climb to 3000 direct ATBUY and hold. Continue climb in hold to 3000.
RADAR required.		
**When ALS inop, increase vis to 3/4 mile. **When ALS inop, increase vis to 1 mile.		

ATIS ★ <b>279.525</b>	APP CON <b>125.125 292.125</b> (ABV 3000) <b>123.7 269.125</b> (3000 and BLW)	TOWER ★ <b>119.05 342.875</b>	GND CON <b>128.15 348.625</b>	CLNC DEL <b>128.15 254.375</b>	ASR/ PAR
--------------------------	---	----------------------------------	----------------------------------	-----------------------------------	-------------



CATEGORY	A	B	C	D
LPV DA *	216-1/2		200	(200-1/2)
LNAV/VNAV DA **	380-5/8		364	(400-3/8)
LNAV MDA **	380-1/2	364 (400-1/2)	380-3/4	364 (400-3/4)
<b>C</b> CIRCLING	560-1	523 (600-1)	580-1 1/2 543 (600-1 1/2)	600-2 563 (600-2)

# RNAV (GPS) RWY 23

SE-2, 20 FEB 2025 to 20 MAR 2025

SE-2, 20 FEB 2025 to 20 MAR 2025