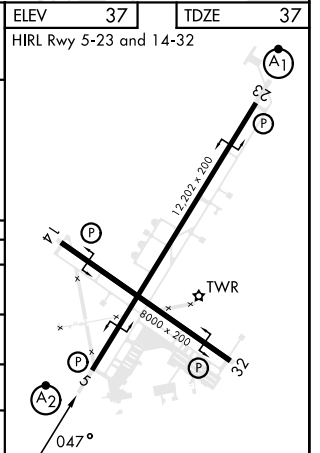
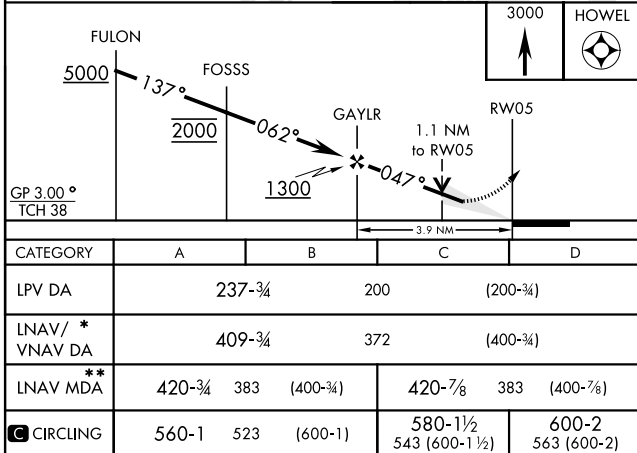
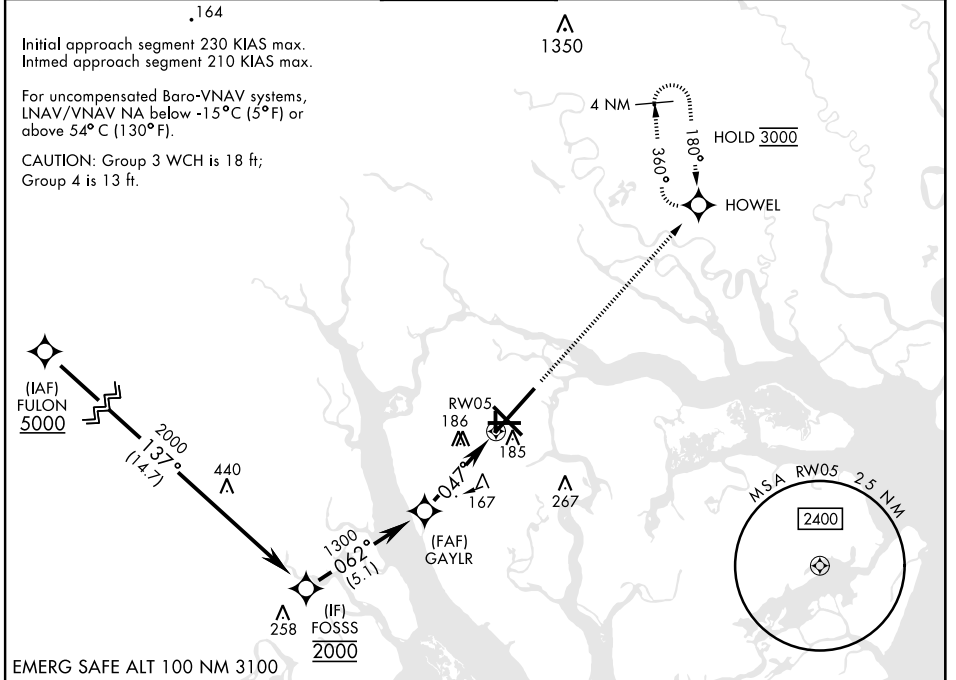


RNAV (GPS) RWY 5

WAAS Chan 90095 W05A	APCH CRS 047°	Rwy Idg 12,202 TDZE 37 Arpt Elev 37	[USN]	BEAUFORT MCAS (MERRITT FLD) (KNBC)
--	-------------------------	--	-------	------------------------------------

RNP APCH	SALSF A2	MISSED APPROACH: Climb to 3000 direct HOWEL and hold, continue climb-in-hold to 3000.
RADAR required ▼ * When ALS inop, increase vis to 1 mile. ** When ALS inop, increase CAT AB vis to 1 mile, CAT CD to 1/2 miles.		

ATIS ★ 279.525	APP CON 125.125 292.125 (ABV 3000) 123.7 269.125 (3000 and BLW)	TOWER★ 119.05 342.875	GND CON 128.15 348.625	CLNC DEL 128.15 254.375	ASR/ PAR
--------------------------	---	---------------------------------	----------------------------------	-----------------------------------	-------------



RNAV (GPS) RWY 5

SE-2, 20 FEB 2025 to 20 MAR 2025

SE-2, 20 FEB 2025 to 20 MAR 2025