

BEAUFORT, SOUTH CAROLINA

TACAN RWY 5

TACAN NBC Chan 42	APCH CRS 054°	Rwy ldg 12,202 TDZE 37 Arprt Elev 37
-----------------------------	-------------------------	---

[USN]

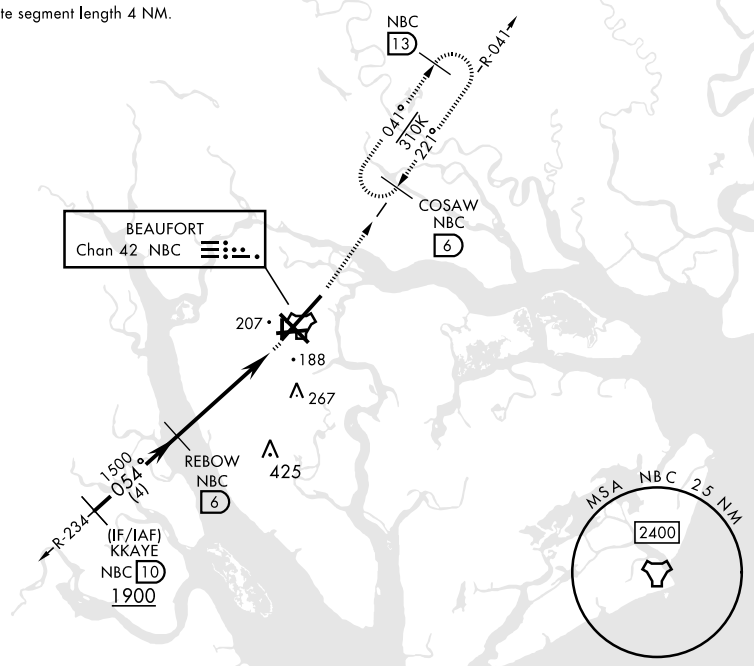
BEAUFORT MCAS (MERRITT FLD) (KNBC)

RADAR required	SALSF 	MISSED APPROACH: Climb to 1000, then climbing left turn to 3000 via NBC TACAN R-041 to COSAW and hold. Continue climb-in-hold to 3000.
<p>▼ * When ALS inop, increase CAT AB vis to 1 mile; CAT CDE vis to 1 3/8 miles.</p>		

ATIS ★ 279.525	APP CON 125.125 292.125 (ABV 3000) 123.7 269.125 (3000 and BLW)	TOWER ★ 119.05 342.875	GND CON 128.15 348.625	CLNC DEL 128.15 254.375	ASR/PAR
--------------------------	---	----------------------------------	----------------------------------	-----------------------------------	---------

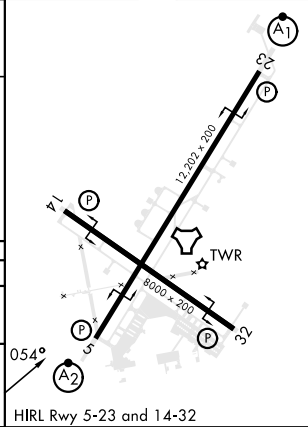
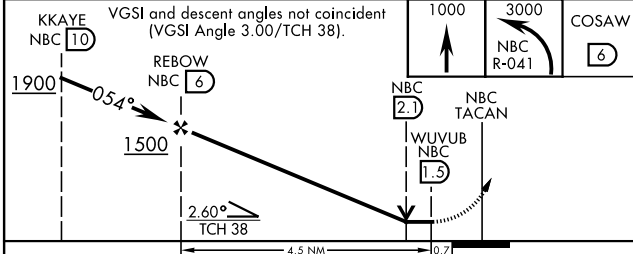
CAUTION: Intermediate segment length 4 NM.

154



EMERG SAFE ALT 100 NM 3100

ELEV	37	TDZE	37
------	----	------	----



CATEGORY	A	B	C	D	E
S-5 *	480-3/4	443 (500-3/4)	480-1	443 (500-1)	
CIRCLING	560-1	523 (600-1)	580-1 1/2 543 (600-1 1/2)	600-2 563 (600-2)	740-2 1/2 703 (800-2 1/2)

BEAUFORT, SOUTH CAROLINA
Amdt 5 11JUL24

32° 29' N-80° 43' W

BEAUFORT MCAS (MERRITT FLD) (KNBC)

TACAN RWY 5

SE-2, 20 FEB 2025 to 20 MAR 2025

SE-2, 20 FEB 2025 to 20 MAR 2025