

ORLANDO, FLORIDA

AL-917 (FAA)

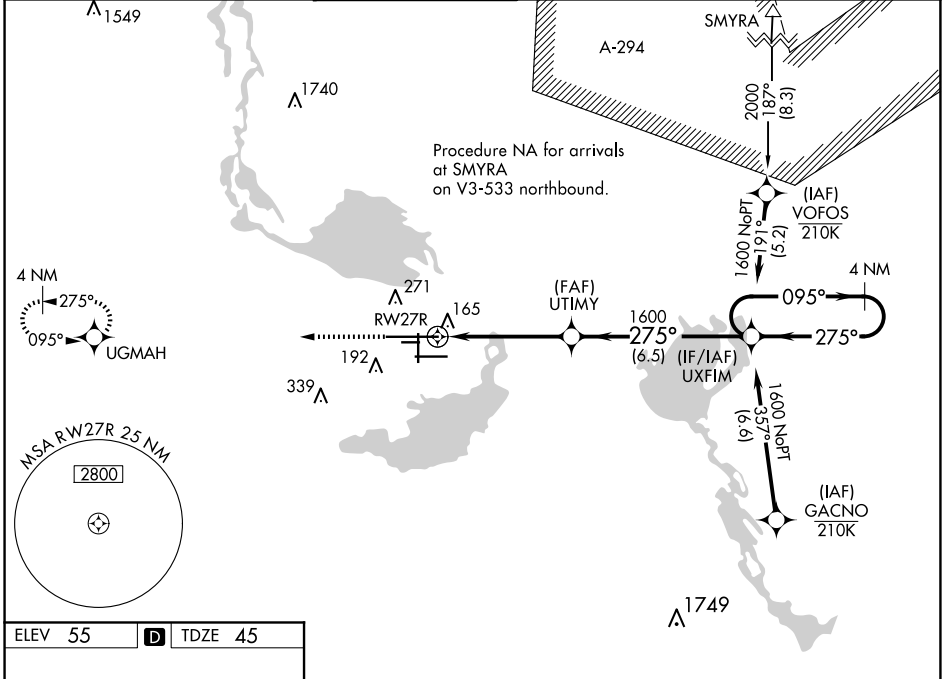
23334

WAAS CH 63209 W27A	APP CRS 275°	Rwy Idg 11002 TDZE 45 Apt Elev 55
--	------------------------	--

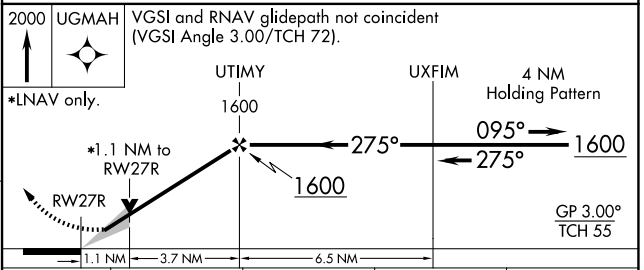
RNAV (GPS) RWY 27R

ORLANDO SANFORD INTL (SF'B)

<p>For uncompensated Baro-VNAV systems, LNAV/VNAV NA below 0°C (32°F) or above 54°C (130°F). DME/DME RNP-0.3 NA.</p> <p>For inop ALS, increase LNAV/VNAV all Cats visibility to 1 1/4 SM, increase LNAV Cat C/D visibility to 1 SM.</p>	<p>MALSR</p>	<p>MISSED APPROACH: Climb to 2000 direct UGMH and hold.</p>		
<p>ATIS 125.975</p> <p>ORLANDO APP CON 135.3 351.9 (NORTH) 119.775 351.9 (SOUTH)</p>	<p>SANFORD TOWER* 120.3(CTAF) 254.35</p>	<p>GND CON 121.35 254.35</p>	<p>CLNC DEL 123.975</p>	<p>CLNC DEL 121.35 (when twr dosed)</p>



ELEV 55	D	TDZE 45
<p>MIRL Rwy 9C-27C and 18-36 </p> <p>HIRL Rwy 9L-27R and 9R-27L </p> <p>REIL Rws 9C, 18, 27L and 36</p>		



CATEGORY	A	B	C	D
LPV DA		245-1/2	200 (200-1/2)	
LNAV/VNAV DA		425-7/8	380 (400-7/8)	
LNAV MDA	420-1/2	375 (400-1/2)	420-5/8	375 (400-5/8)
CIRCLING	580-1	525 (600-1)	600-1 1/2 545 (600-1 1/2)	640-2 585 (600-2)

ORLANDO, FLORIDA
 Amdt 4 12OCT17

28°47'N-81°14'W

ORLANDO SANFORD INTL (SF'B) RNAV (GPS) RWY 27R

SE-3, 20 FEB 2025 to 20 MAR 2025

SE-3, 20 FEB 2025 to 20 MAR 2025