

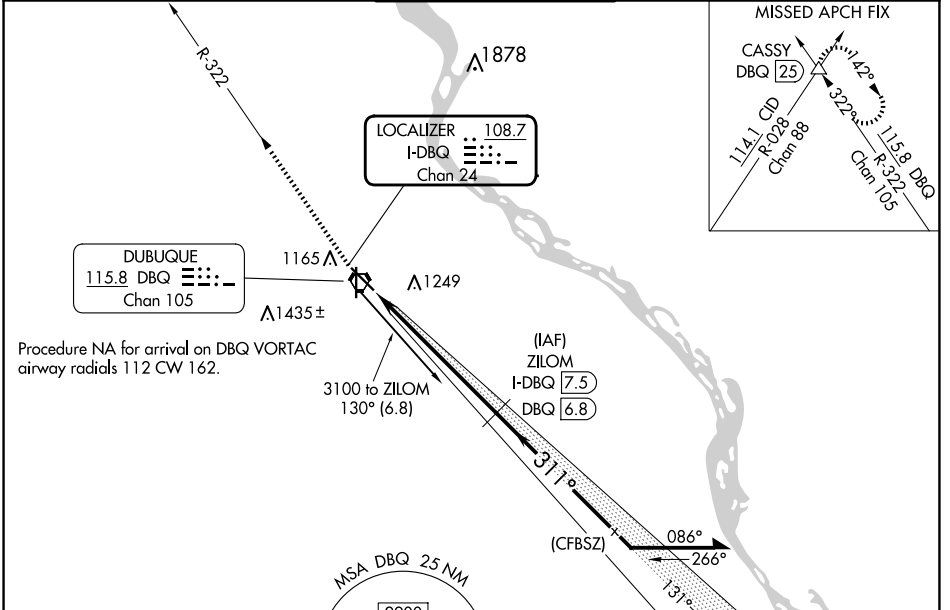
LOC/DME I-DBQ <b>108.7</b> Chan 24	APP CRS <b>311°</b>	Rwy ldg TDZE <b>6502</b> <b>1062</b>	Apt Elev <b>1076</b>
--	------------------------	--	-------------------------

# LOC RWY 31

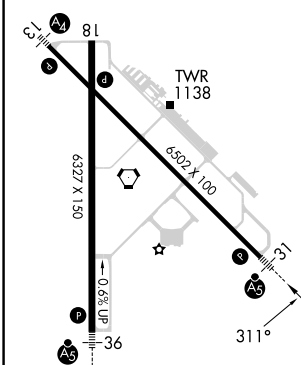
DUBUQUE RGNL (DBQ)

DME required.		MALSR	MISSED APPROACH: Climb to 3500 on DBQ VORTAC R-322 to CASSY INT/DBQ 25 DME and hold.	
For inop ALS, increase S-31 Cat C/D visibility to 1 3/8 SM.				

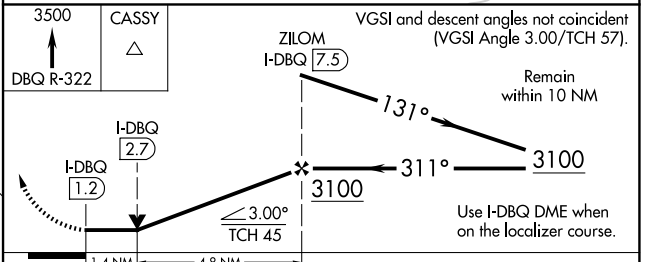
ATIS <b>127.25</b>	CHICAGO CENTER <b>133.95 281.4</b>	DUBUQUE TOWER * <b>119.5 (CTAF) 0 254.4</b>	GND CON <b>121.8</b>	UNICOM <b>122.95</b>
-----------------------	---------------------------------------	--	-------------------------	-------------------------



ELEV 1076	D	TDZE 1062
-----------	---	-----------



Knots	60	90	120	150	180
Min:Sec	6:18	4:12	3:09	2:31	2:06



CATEGORY	A	B	C	D
S-31	1580-1/2	518 (600-1/2)	1580-1	518 (600-1)
CIRCLING	1580-1 504 (600-1)	1600-1 524 (600-1)	1600-1 1/2 524 (600-1 1/2)	1800-2 1/4 724 (800-2 1/4)

NC-3, 20 FEB 2025 to 20 MAR 2025

NC-3, 20 FEB 2025 to 20 MAR 2025