

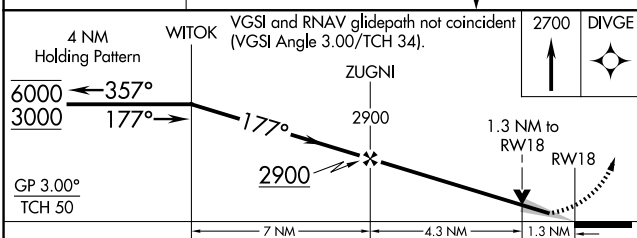
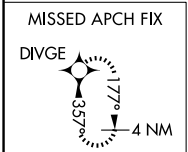
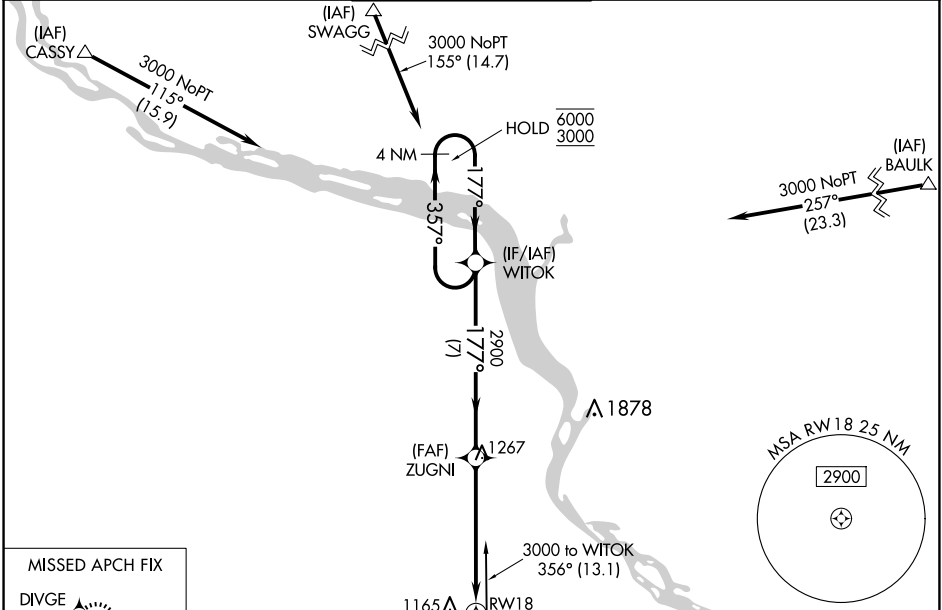
WAAS CH <b>56431</b> <b>W18A</b>	APP CRS <b>177°</b>	Rwy Idg <b>6327</b> TDZE <b>1073</b> Apt Elev <b>1076</b>
--	------------------------	---

# RNAV (GPS) RWY 18

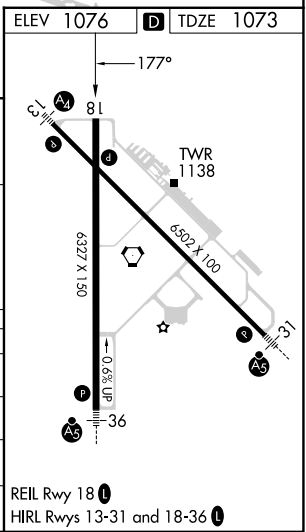
DUBUQUE RGNL (DBQ)

RNP APCH-GPS.		MISSED APPROACH: Climb to 2700 direct DIVE and hold.		
<p><b>▽</b> <b>▲</b> For uncompensated Baro-VNAV systems, LNAV/VNAV NA below -28°C or above 54°C.</p>				

ATIS <b>127.25</b>	CHICAGO CENTER <b>133.95 281.4</b>	DUBUQUE TOWER * <b>119.5 (CTAF) 254.4</b>	GND CON <b>121.8</b>	UNICOM <b>122.95</b>
-----------------------	---------------------------------------	--	-------------------------	-------------------------



CATEGORY	A	B	C	D
LPV DA		1323-¾	250 (300-¾)	
LNAV/VNAV DA		1334-7/8	261 (300-7/8)	
LNAV MDA	1520-1	447 (500-1)	1520-1¾	447 (500-1¾)
CIRCLING	1580-1 504 (600-1)	1600-1 524 (600-1)	1600-1½ 524 (600-1½)	1800-2¼ 724 (800-2¼)



NC-3, 20 FEB 2025 to 20 MAR 2025

NC-3, 20 FEB 2025 to 20 MAR 2025