

OXNARD, CALIFORNIA

ILS Y or LOC/DME Y RWY 21

LOC/DME I-RRG 109.3 Chan 30	APCH CRS 212°	Rwy ldg 11,102 TDZE 13 Arprt Elev 13
---	-------------------------	---

[USN]

POINT MUGU NAS
(NAVAL BASE VENTURA CO)(KNTD)

DME or RADAR required.

- ▼ * When ALS inop, increase vis to ¾ mile.
- ** When ALS inop, increase vis CAT AB to 1 mile, CAT CD vis to 1½ miles.
- *** Circling not authorized E of Rwy 3-21.

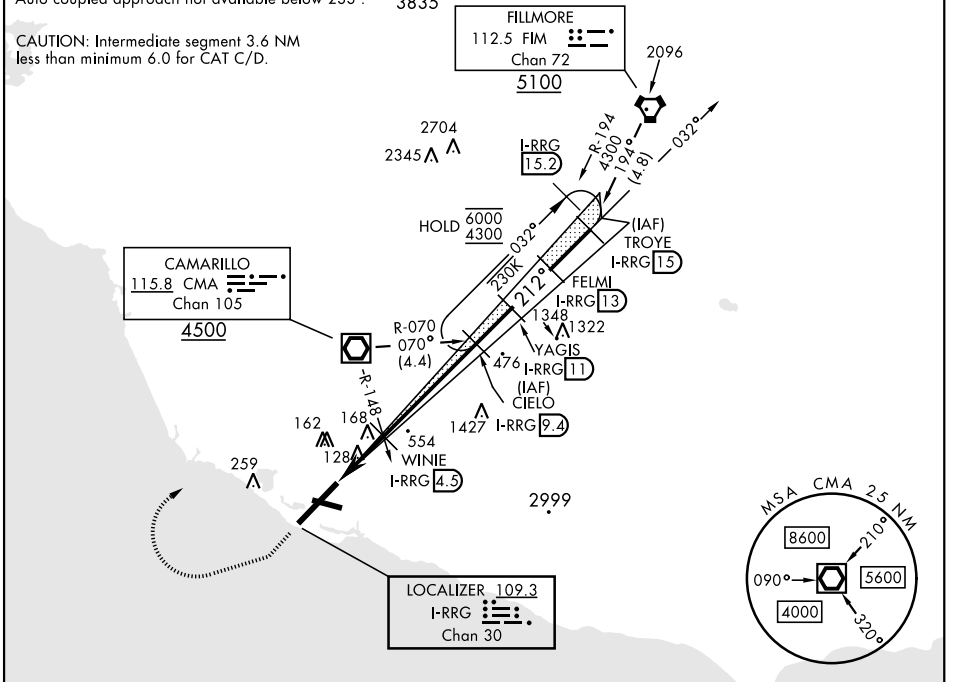


MISSED APPROACH: Climb to 500 via hdg 212°, then climbing right turn to 3000 via hdg 247°, then climbing right turn to 5000 direct CMA VOR/DME, then via CMA R-070 to CIELO and hold.

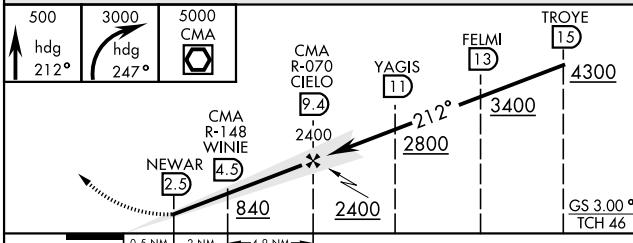
ATIS ★ 125.55 363.05	APP CON 128.65 307.275	TOWER ★ 124.85 290.375	GND CON 121.6 360.2	CLNC DEL 120.75 279.55	ASR/PAR
--------------------------------	----------------------------------	----------------------------------	-------------------------------	----------------------------------	---------

Auto coupled approach not available below 233'. 3835

CAUTION: Intermediate segment 3.6 NM less than minimum 6.0 for CAT C/D.

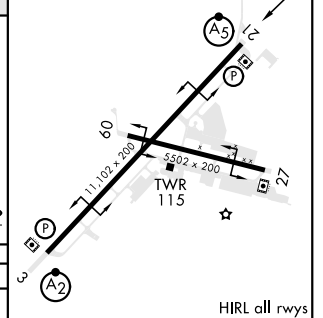


EMERG SAFE ALT 100 NM 12,100



CATEGORY	A	B	C	D
S-ILS 21*	213-½ 200 (200-½)			
S-LOC 21**	420-½	407 (500-½)	420-¾	407 (500-¾)
CIRCLING***	440-1	520-1	520-1½	600-2
	427 (500-1)	507 (600-1)	507 (600-1½)	587 (600-2)

ELEV	13
TDZE	13



FAF to MAP 6.9 NM					
Knots	60	90	120	150	180
Min:Sec	6:54	4:36	3:27	2:46	2:18

OXNARD, CALIFORNIA
Amdt 6 29DEC22

34°07'N-119°07'W

POINT MUGU NAS (KNTD)
(NAVAL BASE VENTURA CO)

ILS Y or LOC/DME Y RWY 21

SW-3, 20 FEB 2025 to 20 MAR 2025

SW-3, 20 FEB 2025 to 20 MAR 2025