


WAAS CH 77915 W08A	APP CRS 077°	Rwy Idg TDZE 399 Apt Elev 403	6118
----------------------------------------	------------------------	---------------------------------------------------	-------------

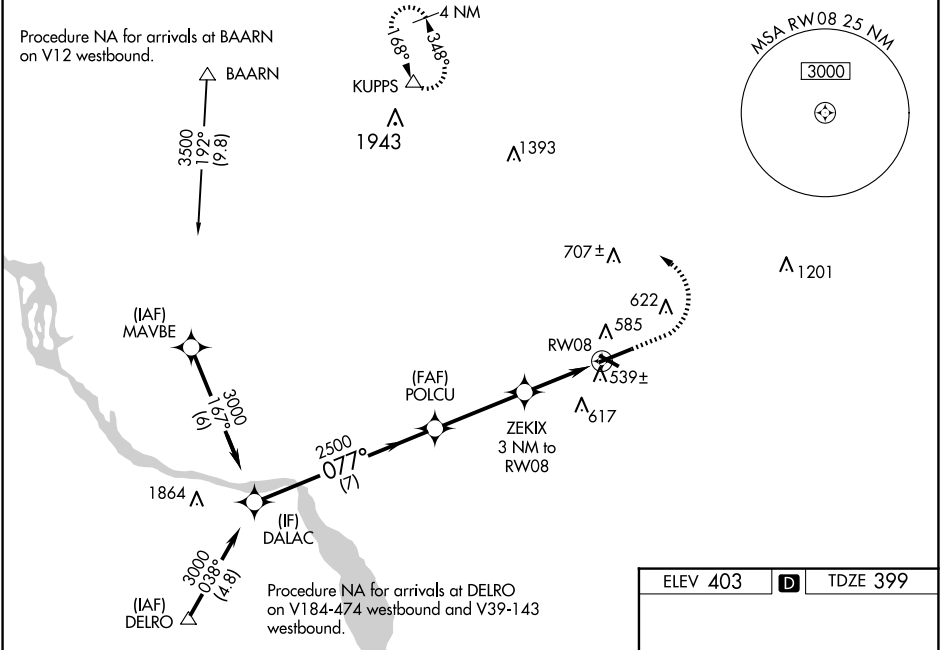
RNAV (GPS) RWY 8

LANCASTER (LNS)

For uncompensated Baro-VNAV systems, LNAV/VNAV NA below -15°C (5°F) or above 54°C (130°F). DME/DME RNP-0.3 NA. When local altimeter setting not received, use Harrisburg Intl altimeter setting and increase all DA 64 feet and all MDA 80 feet, increase LNAV/VNAV all Cats visibility ¼ mile, LNAV and Circling Cats C and D visibility ¼ mile. Baro-VNAV and VDP NA when using Harrisburg Intl altimeter setting. Night landing: Rwy 13, 31 NA. For inoperative MALSRR increase LNAV/VNAV all Cats visibility to 1 ¼ mile, and LNAV Cats C/D visibility to 1 ½ mile. For inoperative MALSRR when using Harrisburg Intl altimeter setting, increase LPV all Cats visibility to ¾ mile, LNAV/VNAV all Cats visibility to 1 ½ mile and LNAV Cats C/D visibility to 1 ¾ mile.

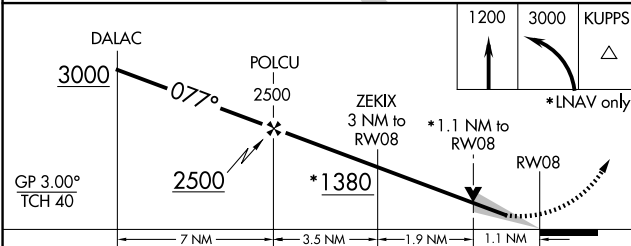
MALSRR

MISSED APPROACH:
 Climb to 1200 then climbing left turn to 3000 direct KUPPS and hold.

ATIS 125.675	HARRISBURG APP CON 126.45 281.525	LANCASTER TOWER ★ 120.9 (CTAF) 251.1	GND CON 121.8	UNICOM 122.95
------------------------	---------------------------------------------	-------------------------------------------------------	-------------------------	-------------------------



NE-4, 20 FEB 2025 to 20 MAR 2025

NE-4, 20 FEB 2025 to 20 MAR 2025



ELEV 403	D	TDZE 399
----------	----------	----------

TWR 476
 6933 X 150
 0.3% UP
 1102 X 100
 467
 077°

REIL Rwy 31
 HIRL Rwy 8-26
 MIRL Rwy 13-31