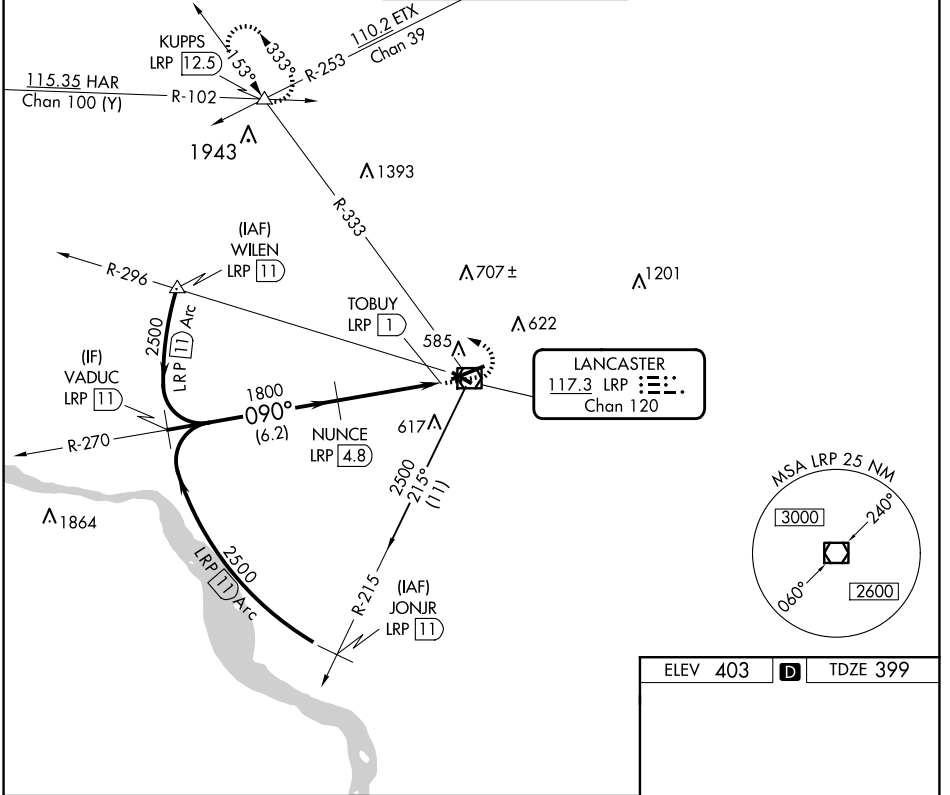


VOR/DME LRP <b>117.3</b> Chan 120	APP CRS <b>090°</b>	Rwy Idg <b>6118</b> TDZE <b>399</b> Apt Elev <b>403</b>
---	------------------------	--

# VOR/DME RWY 8

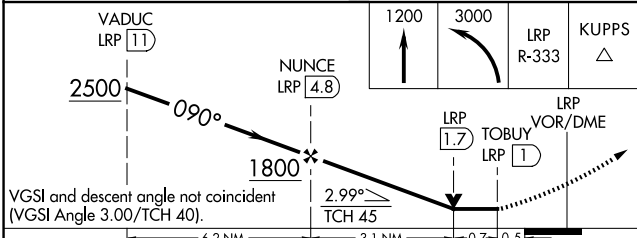
LANCASTER (LNS)

Circling Rwy 13, 31 NA at night. Inop table does not apply. When local altimeter setting not received, use Harrisburg Intl altimeter setting and increase all MDA 80 feet, and S-8 and Circling Cats C and D visibility ¼ mile.	MALSR 	MISSED APPROACH: Climb to 1200 then climbing left turn to 3000 via LRP VOR/DME R-333 to KUPPS INT/LRP 12.5 DME and hold.		
ATIS <b>125.675</b>	HARRISBURG APP CON <b>126.45 281.525</b>	LANCASTER TOWER★ <b>120.9</b> (CTAF) <b>251.1</b>	GND CON <b>121.8</b>	UNICOM <b>122.95</b>

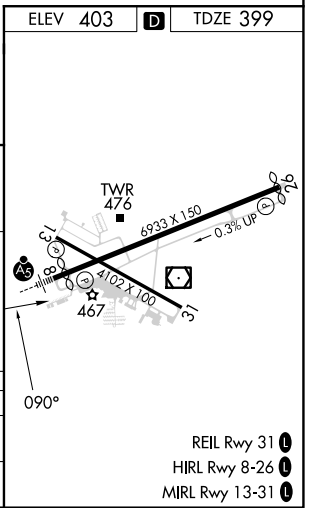


NE-4, 20 FEB 2025 to 20 MAR 2025

NE-4, 20 FEB 2025 to 20 MAR 2025



CATEGORY	A	B	C	D
S-8	820-1	421 (500-1)	820-1¼	421 (500-1¼)
CIRCLING	940-1	537 (600-1)	960-1½	1060-2 657 (700-2)



- REIL Rwy 31
- HIRL Rwy 8-26
- MIRL Rwy 13-31