

LOC/DME I-CLL <b>110.55</b> Chan 42(Y)	APP CRS <b>166°</b>	Rwy Idg TDZE Apt Elev	<b>7000</b> <b>321</b> <b>321</b>
--	------------------------	-----------------------------	---

# LOC BC RWY 17

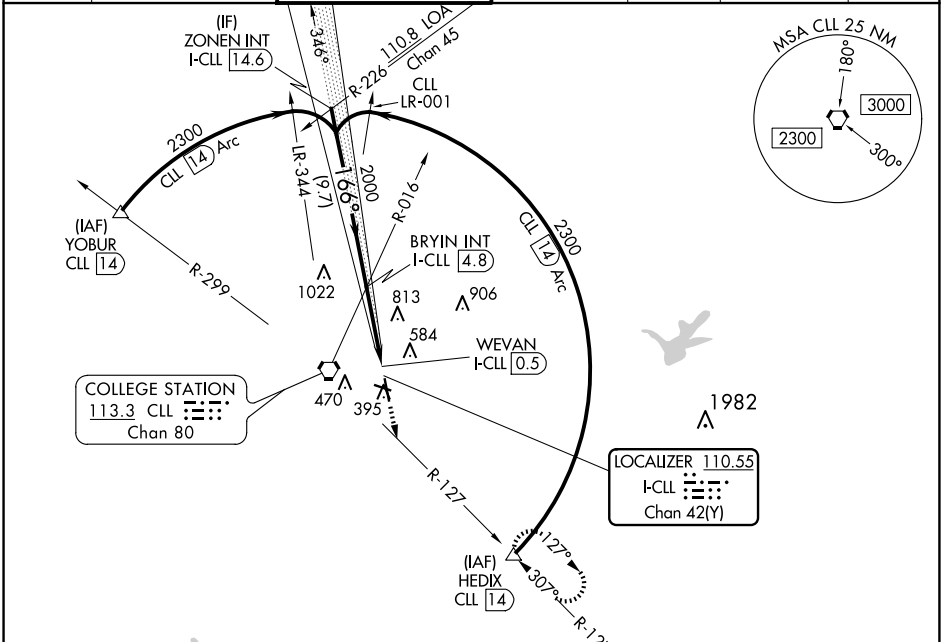
EASTERWOOD FLD (CLL)

DME required.

**MISSSED APPROACH:** Climb to 2000 on heading 166° and CLL R-127 to HEDIX/CLL 14 DME and hold.

Rwy 17 helicopter visibility reduction below ¾ SM NA.

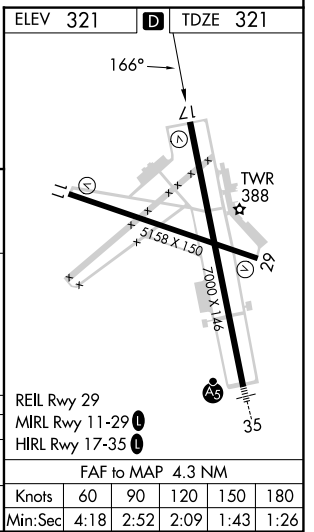
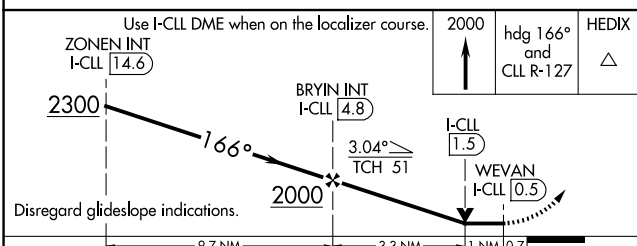
ATIS <b>126.85</b>	HOUSTON APP CON <b>134.3 360.85</b>	EASTERWOOD TOWER ★ <b>118.5 (CTAF) 284.7</b>	GND CON <b>128.7 284.7</b>	CLNC DEL <b>128.7</b>	CLNC DEL <b>120.4</b> (when twr closed)	UNICOM <b>122.95</b>
-----------------------	--	---	-------------------------------	--------------------------	---	-------------------------



SC-5, 20 FEB 2025 to 20 MAR 2025

SC-5, 20 FEB 2025 to 20 MAR 2025

## BACK COURSE



CATEGORY	A	B	C	D	E	
S-LOC 17	940-1	619 (700-1)	940-1¾	619 (700-1¾)		
CIRCLING	940-1	619 (700-1)	1000-2 679 (700-2)	1180-2¾ 859 (900-2¾)	1180-3 859 (900-3)	
	Knots	60	90	120	150	180
	Min:Sec	4:18	2:52	2:09	1:43	1:26