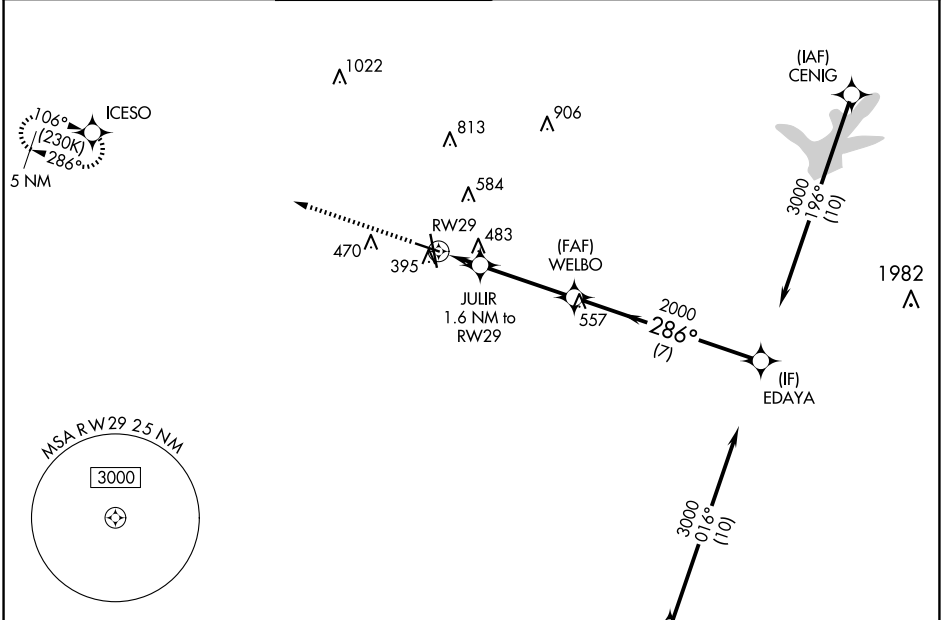


WAAS CH 87022 W29A	APP CRS 286°	Rwy Idg TDZE Apt Elev	5158 314 321
--	------------------------	-----------------------------	---

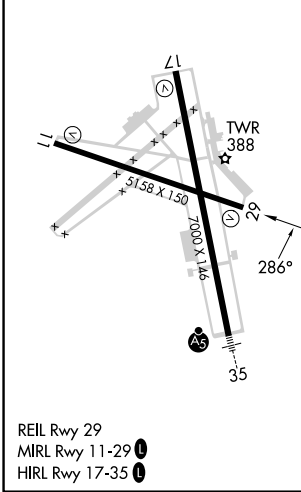
RNAV (GPS) RWY 29

EASTERWOOD FLD (CLL)

RNP APCH.		MISSED APPROACH: Climb to 2000 direct ICESO and hold.						
<p>⚠ Baro-VNAV NA when using Caldwell altimeter setting. For uncompensated Baro-VNAV systems, LNAV/VNAV NA below -3°C or above 54°C. Rwy 29 helicopter visibility reduction below ¾ SM NA.</p>		ATIS 126.85	HOUSTON APP CON 134.3 360.85	EASTERWOOD TOWER ★ 118.5 (CTAF) 0 284.7	GND CON 128.7 284.7	CLNC DEL 128.7	CLNC DEL 120.4 (when twr closed)	UNICOM 122.95



ELEV 321	D	TDZE 314
----------	----------	----------



2000	ICESO				EDAYA
↑	✧				
*LNAV only.					
RWY 29	JULIR 1.6 NM to RWY 29	WELBO 2000			EDAYA 3000
	860*	2000	286°		GP 3.00° TCH 54
	1.6 NM	3.5 NM	7 NM		
CATEGORY	A	B	C	D	E
LPV DA	564-¾		250 (300-¾)		
LNAV/VNAV DA	762-1⅓		448 (500-1⅓)		
LNAV MDA	740-1	426 (500-1)	740-1¼		426 (500-1¼)
C CIRCLING	860-1 539 (600-1)	880-1 559 (600-1)	1000-2 679 (700-2)	1180-2¾ 859 (900-2¾)	1180-3 859 (900-3)

SC-5, 20 FEB 2025 to 20 MAR 2025

SC-5, 20 FEB 2025 to 20 MAR 2025