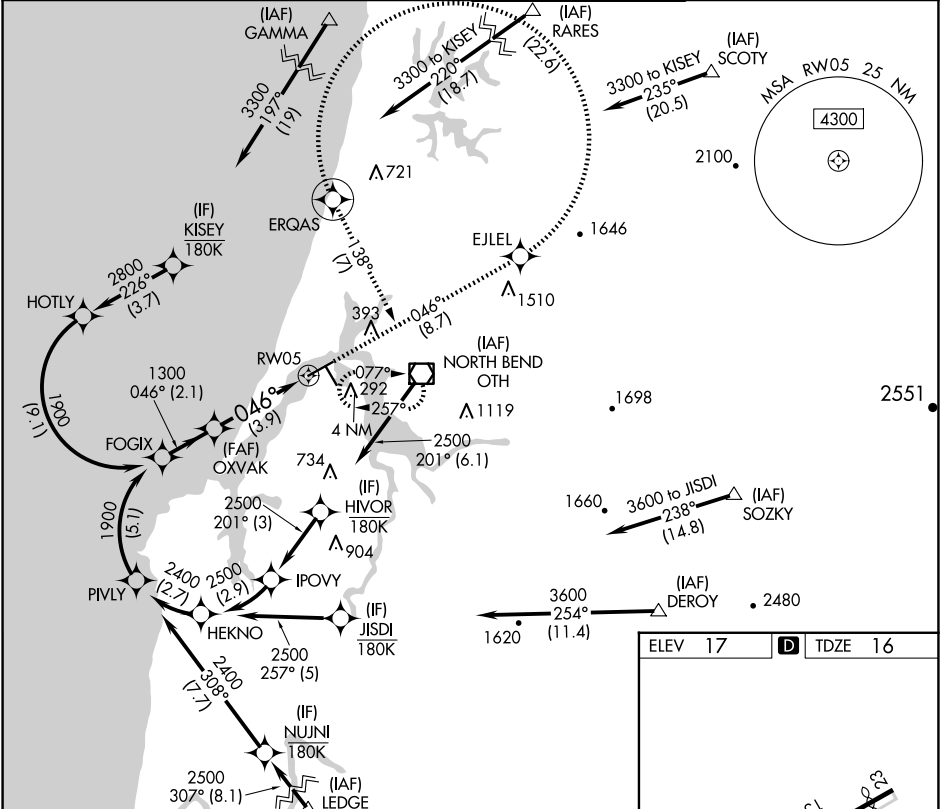


APP CRS	Rwy Idg	5320
046°	TDZE	16
	Apt Elev	17

RNAV (RNP) Z RWY 5

SOUTHWEST OREGON RGNL (OTH)

RNP AR APCH. RF required.		MALSR	MISSED APPROACH: Climb to 3300 on track 046° to EJLEL, left turn to ERQAS, and on track 138° to OTH VOR/DME and hold. *Missed approach requires minimum climb of 400 feet per NM to 1200. #Missed approach requires minimum climb of 255 feet per NM to 2400.	
▼ For inop ALS, increase *RNP 0.11 all Cats visibility to 1 SM, #RNP 0.30 all Cats visibility to 1 1/8 SM, and RNP 0.30 all Cats visibility to 1 1/8 SM. For uncompensated Baro-VNAV systems, procedure NA below -2°C or above 54°C.				
AWOS-3PT	SEATTLE CENTER	NORTH BEND TOWER*	GND CON	
135.075	127.55 254.35	118.45 (CTAF)	127.1	



NW-1, 20 FEB 2025 to 20 MAR 2025

NW-1, 20 FEB 2025 to 20 MAR 2025

See planview for multiple IF locations.	3300	EJLEL	ERQAS	tr 138°	OTH
FOGIX	↑	✧	⊙		⬜
1900	tr 046°				
GP 3.00°					
TCH 51					
	2.1 NM	3.9 NM			
CATEGORY	A	B	C	D	
RNP 0.11 DA*		394-5/8	378 (400-3/8)		
RNP 0.30 DA#		477-1 1/8	461 (500-1 1/8)		
RNP 0.30 DA		569-1 3/8	553 (600-1 3/8)		
AUTHORIZATION REQUIRED					
<div style="text-align: right;"> HIRL Rwy 5-23 1 MIRL Rwy 13-31 2 REIL Rwys 13, 23 and 31 3 </div>					