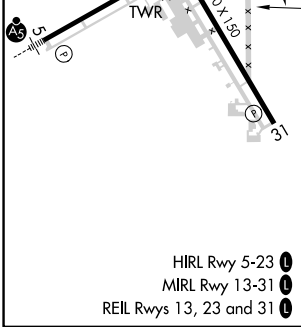
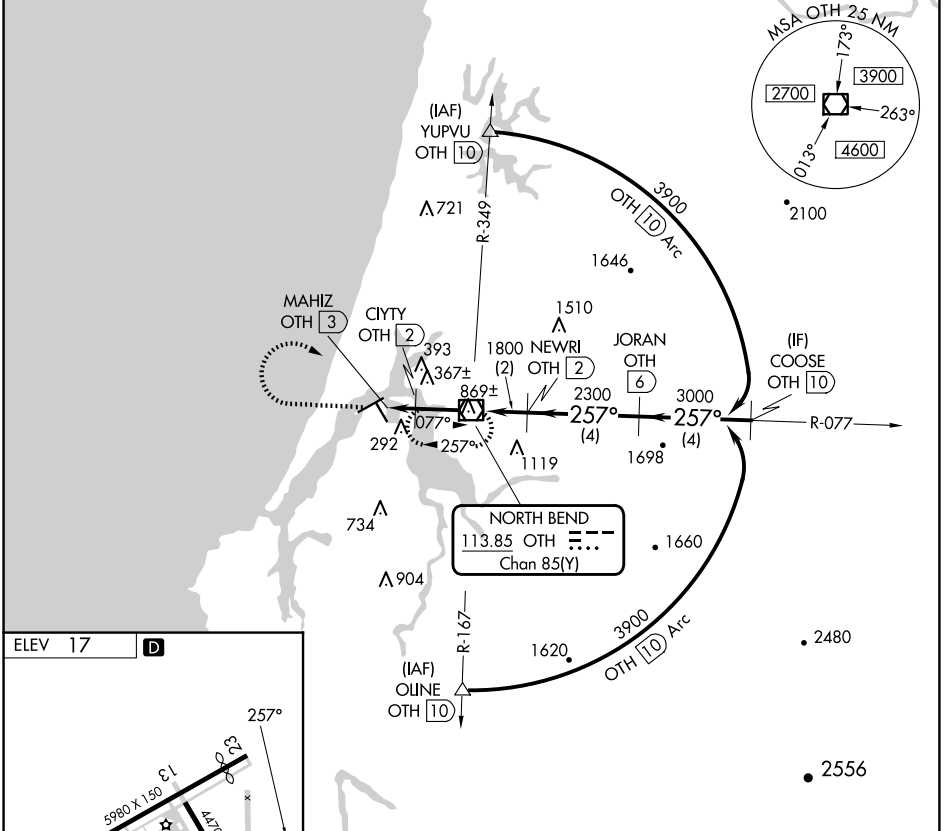


VOR/DME OTH <b>113.85</b> Chan <b>85(Y)</b>	APP CRS <b>257°</b>	Rwy Idg TDZE Apt Elev <b>17</b>	<b>N/A</b> <b>N/A</b> <b>17</b>
---	------------------------	--	---------------------------------------

**VOR-B**  
SOUTHWEST OREGON RGNL (OTH)

DME required.	MISSED APPROACH: Climb to 2300 then climbing right turn to 3600 direct OTH VOR/DME and hold.
<p><b>▼</b> Circling Rwy 13, 31 NA at night. <b>▲</b> Rwy 13, 31 helicopter visibility reduction below 1 SM NA.</p>	

AWOS-3PT <b>135.075</b>	SEATTLE CENTER <b>127.55 254.35</b>	NORTH BEND TOWER* <b>118.45 (CTAF) 0</b>	GND CON <b>127.1</b>
----------------------------	--	---	-------------------------



	2300	3600	OTH					
	↑	↷	☐					
				NEWRI OTH (2)	JORAN OTH (6)			COOSE OTH (10)
								3900
				CIYTY OTH (2)				3000
				MAHIZ OTH (3)				2300
								1800
								1060
	1 NM	2 NM	2 NM	4 NM	4 NM			
CATEGORY	A	B	C	D				
700-1	820-1	1100-3	1180-3					
683 (700-1)	803 (900-1)	1083 (1100-3)	1163 (1200-3)					
<b>☐</b> CIRCLING								

NW-1, 20 FEB 2025 to 20 MAR 2025

NW-1, 20 FEB 2025 to 20 MAR 2025