

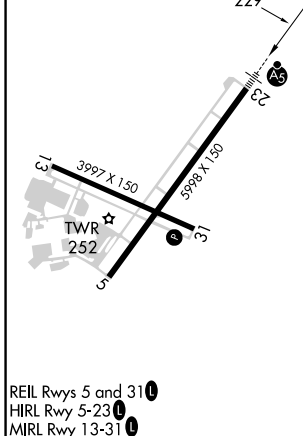
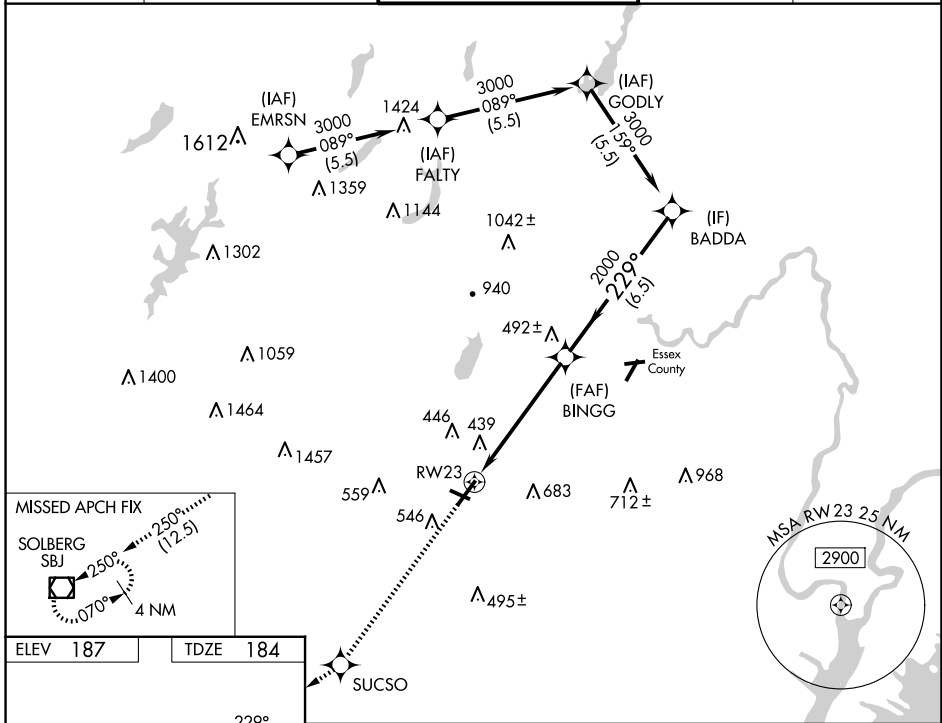
WAAS CH 45621 W23A	APP CRS 229°	Rwy Idg TDZE 184 Apt Elev 187	5998
--	------------------------	---	-------------

RNAV (GPS) Z RWY 23

MORRISTOWN MUNI (MMU)

RNP APCH.	MALSR 	MISSED APPROACH: Climb to 2000 direct SUCSO then on track 250° to SBJ VOR/DME and hold.
<p>⚠ Circling to Rwy 13, 31 NA at night. For uncompensated Baro-VNAV systems, LNAV/VNAV NA below -15°C or above 54°C. For inop ALS, increase LNAV/VNAV all Cats visibility to 1½ SM and LNAV Cats C/D visibility to 1¾ SM.</p>		

ATIS 124.25	NEWARK APP CON 127.6 379.9	MORRISTOWN TOWER ★ 118.1 (CTAF) 353.9	GND CON 134.2	CLNC DEL 128.6
-----------------------	--------------------------------------	---	-------------------------	--------------------------



ELEV 187	TDZE 184	2000		SUCSO	tr 250°	SBJ	BADDA	3000
*LNAV only								
RW23			BINGG		2000		229°	
1.5 NM			4 NM		6.5 NM		GP 3.00° TCH 55	

CATEGORY	A	B	C	D
LPV DA		384-½	200 (200-½)	
LNAV/VNAV DA		749-1¼	565 (600-1¼)	
LNAV MDA	700-½	516 (600-½)	700-1	516 (600-1)
C CIRCLING	860-1 673 (700-1)	900-1 713 (800-1)	1000-2½ 813 (900-2½)	1200-3 1013 (1100-3)

NE-2, 20 FEB 2025 to 20 MAR 2025

NE-2, 20 FEB 2025 to 20 MAR 2025